



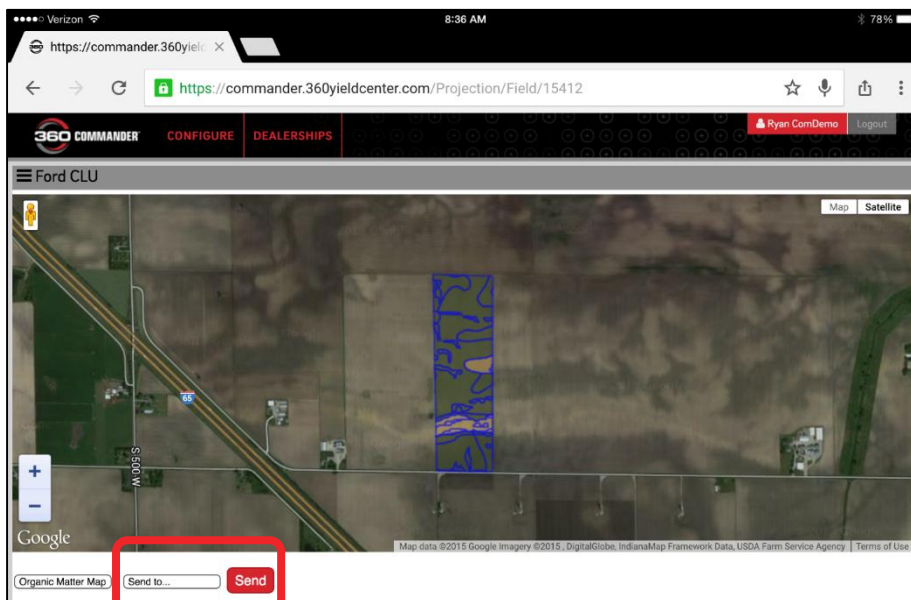
360 COMMANDER™ HOW-TO

Send Shapefiles from iPad with FieldView to 20/20

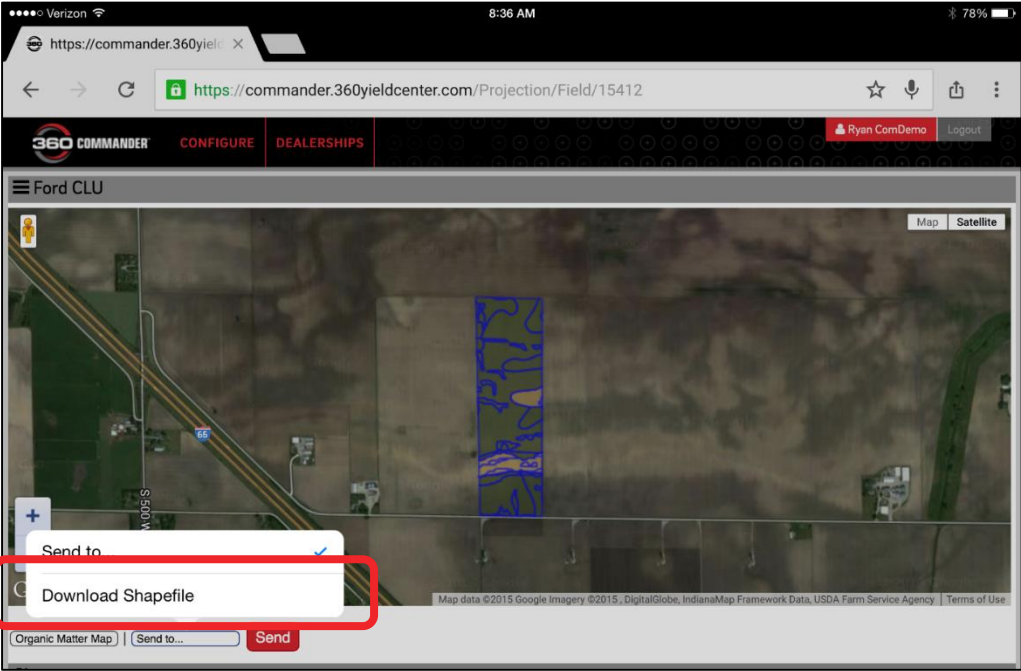
1. Log into 360 COMMANDER using Safari, Google Chrome or other web browser.
2. Load the field you wish to download the Shapefile for.
3. Solve for seeding rates.

Field Projections Worksheet							
Solver Advantage: 0 bpa				Specialty - 43R85 Planting Date: 04/23/2015 Forecast: IN WNC 2010to2014 Avg			
45.73 Acres	Seeding Rate	Projected Yield	Limiting Factor	11/24/2014	Planting	V4	
Average	35	235.0 bpa	Seed	50N	54N	81N	
22.19 ac / Dc / O	36	240.1 bpa	Seed	50N	54N	85N	
5.40 ac / Pa / O	37	246.8 bpa	Seed	50N	54N	90N	
2.27 ac / Re / O	35	233.5 bpa	Seed	50N	54N	80N	
1.90 ac / AsB / 2	28	186.8 bpa	Seed	50N	54N	55N	
1.52 ac / MuA / C	37	241.5 bpa	Water	50N	54N	85N	

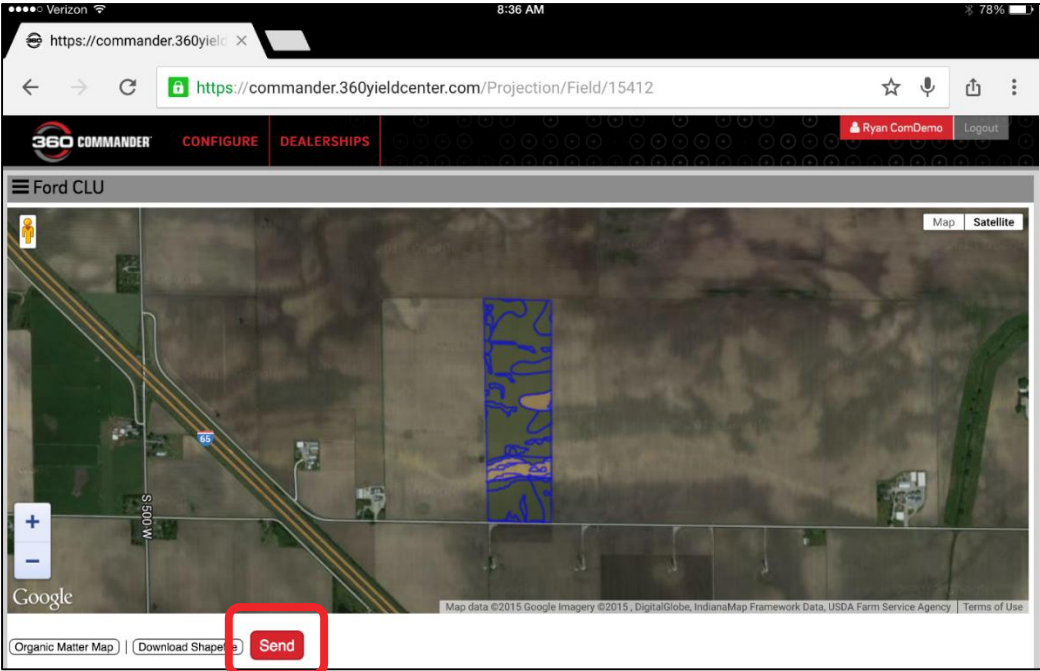
4. Select "Send to" button.



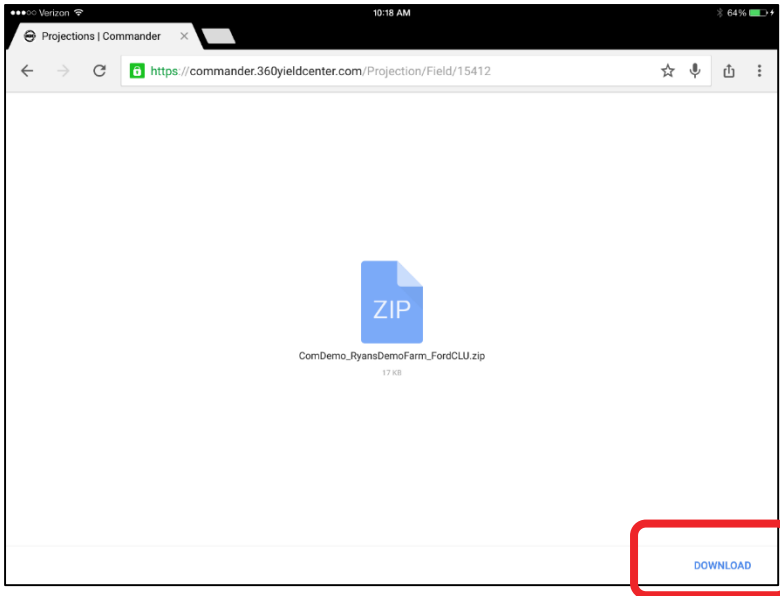
5. Select "Download Shapefile".



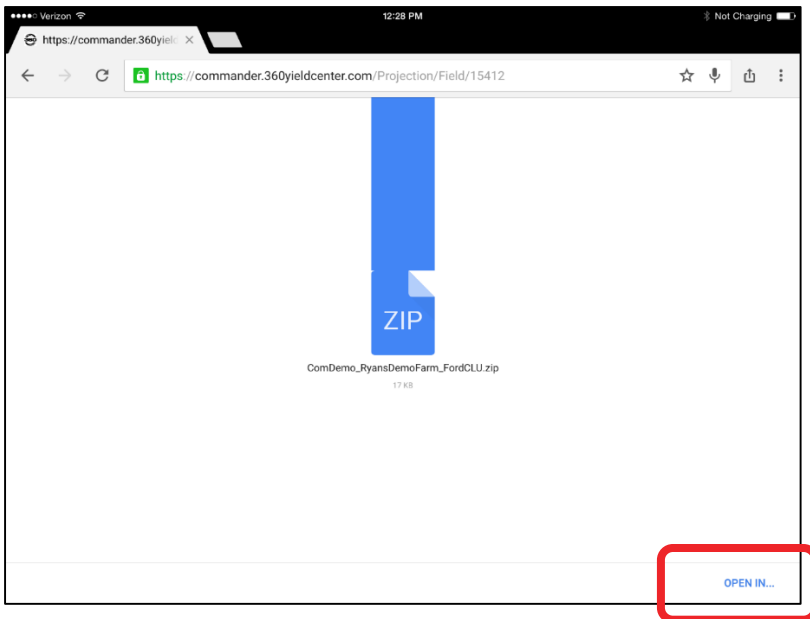
6. Select "Send".



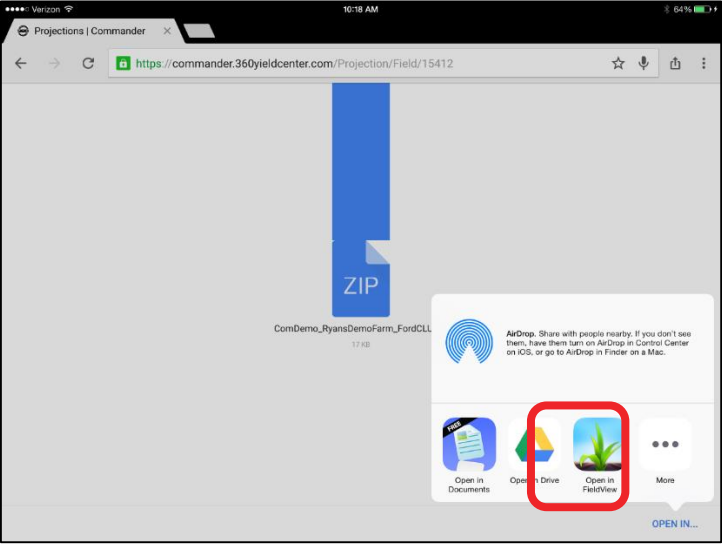
7. When this screen appears select "Download".



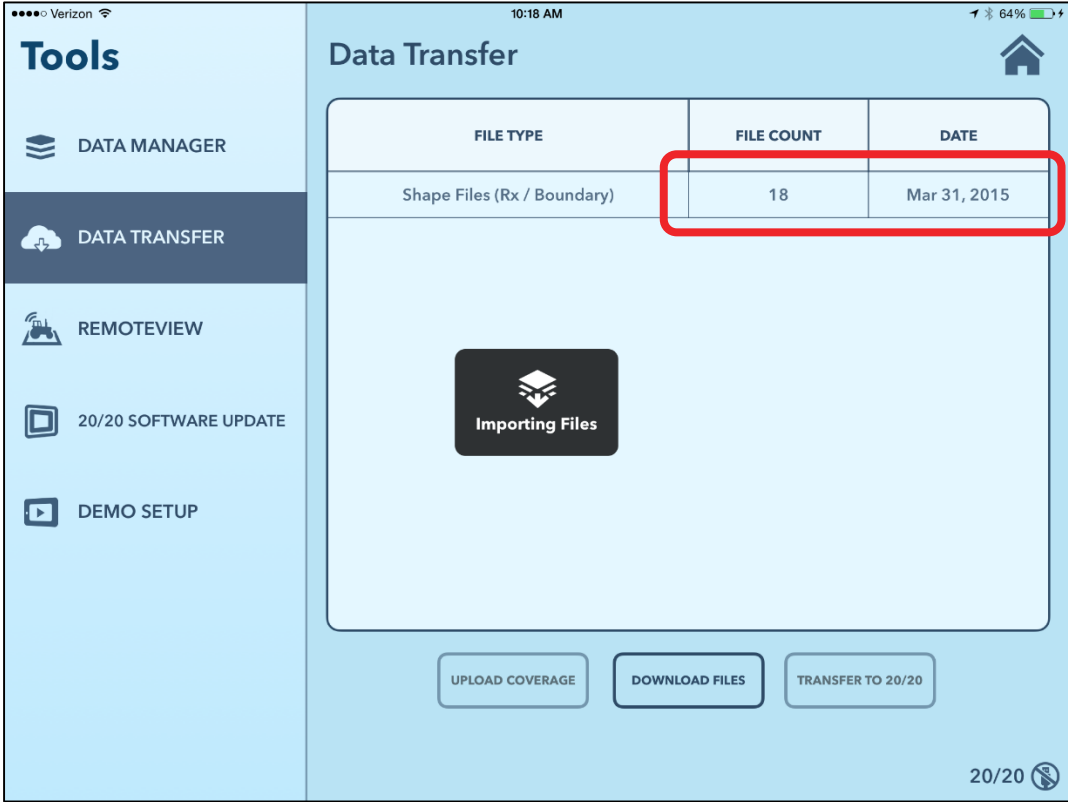
8. Select "Open In".



9. Select the FieldView icon.



10. The file will import to the Data Transfer section of FieldView. When done the "File Count" will increase and the "Date" will update.



11. Select "Transfer to 20/20" to push the prescriptions to the 20/20.

