



INSTRUCTIONS 360 Y-DROP™ SQUARE TUBE UPGRADE

JOHN DEERE 4730/4830

INSTRUCTIONS 360 Y-DROP SQUARE TUBE UPGRADE

JOHN DEERE 4730/4830



Figure 1 Before upgrade



Figure 2 Upgrade completed

⊕ RECOMMENDED TOOLS

- + Ratchet wrench with 1/2" and 9/16" deep well sockets
- + 3/8" 12-point socket
- + 1/2" and 9/16" combination wrenches
- + Drill with 7/16" drill bit
- + Impact driver

⊕ QUESTIONS

- + Call our Product Support team at 888-512-4890

I.

INSTALL WET BOOM
SPACER PLATE

This process will create the clearance necessary for the new square tube and wet boom assembly.

Figure 3

Step 1 Remove bolt assemblies (1).

Step 2 Install two 4" spacer plates (2).
From Center Section Kit

Figure 4

Step 3 Install 5/16" x 2" bolts (3) with flat washers on the top and bottom and the Nylock nut.
Hardware Kit B from Center Section Kit

Repeat Steps 1-3 for all wet boom support assemblies.

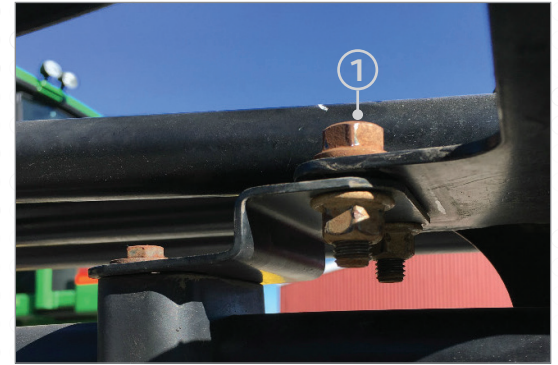


Figure 3

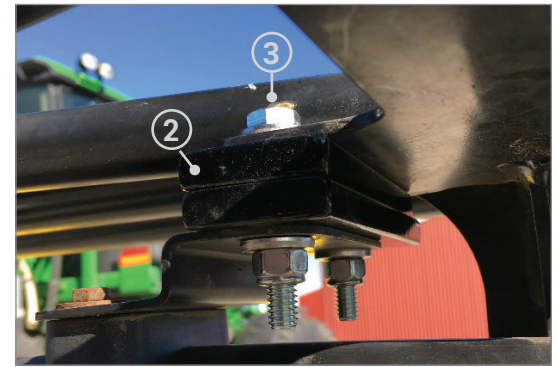


Figure 4

II.

REMOVE RISER TUBE
ASSEMBLIES

Follow these steps to remove each riser tube assembly:

Figure 5

Step 1 Remove pin (1).

Step 2 Remove riser tube assembly (2).

Repeat Steps 1-2 for all riser tube assemblies.

Retain riser tube assemblies for later reinstallation.



Figure 5

III.

INSTALL NEW SQUARE TUBE BRACKET ON OEM PRIMARY BOOM

Figures 6 and 7

To prepare for the steps that follow, you will need to drill a 7/16" hole 84" +/-6" from the pivot pin on the OEM Primary boom (1). This will allow for the installation of the U-bolt on the rear OEM boom.

Next, install new sprayer mount packages. These may be mounted directly above where the Z-bracket assemblies are now mounted.

Figure 8

Step 1 With the threads pointing down, install U-bolt (1) on front OEM boom. Install bracket assembly (2) and the nuts onto the front OEM boom.
Bag AA

Step 2 With the threads pointing down, install U-bolt (3) over the rear OEM boom. Install bracket assembly (4) and nuts onto the rear OEM boom.
Bag EE

Step 3 Install extension tube (5) into bracket assemblies (2) and (4).

Step 4 Install 360 Y-DROP boom bracket (6) onto extension tube (5).
Bag BB

Step 5 Install set screw (7).
Hardware Kit A within Bag BB

Figure 9

Step 6 Install set screws (8).
P/N 207042 Hardware Kit D
within OEM Boom Bracket Kit

Step 7 Install stop bolt assemblies (9) at the front and rear of the extension tube.
Hardware Kit B within Bag BB

Repeat Steps 1-8 for the remaining sprayer mount packages.

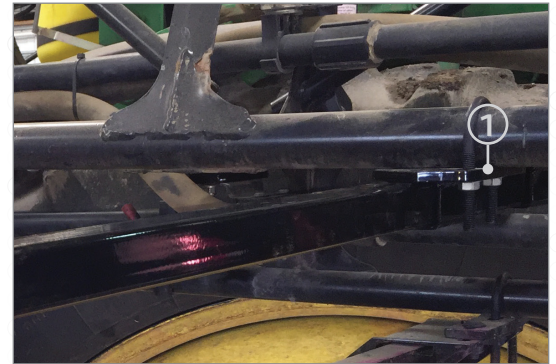


Figure 6

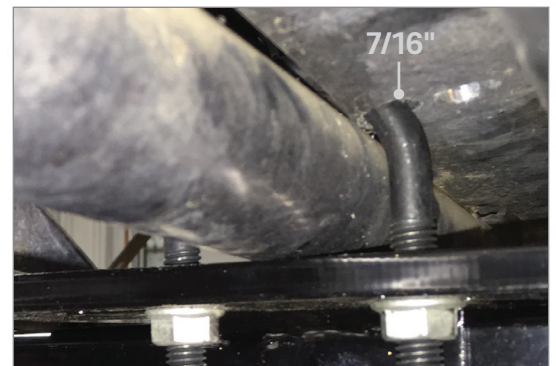


Figure 7

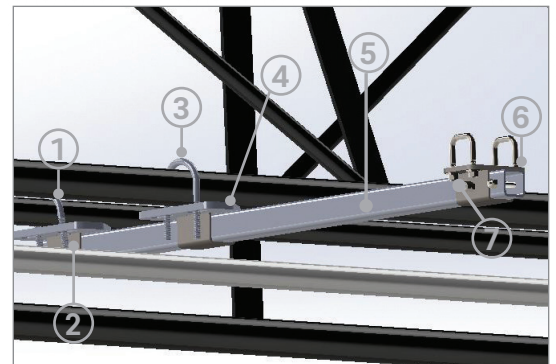


Figure 8

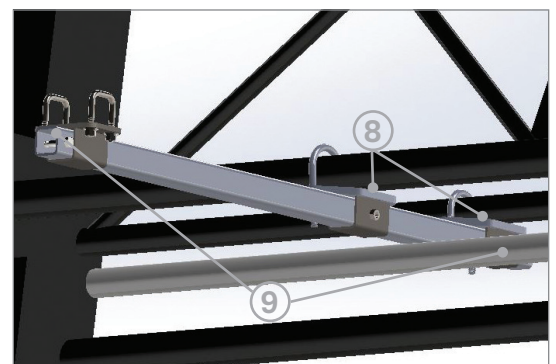


Figure 9

IV.

REMOVE AND RELOCATE
360 Y-DROP SYSTEM BOOM

Figure 10

Step 1 Remove U-bolt (1) from the 360 Y-DROP boom bracket.

Step 2 Remove lower yoke pin (2) from the yoke strap assembly.

Repeat Steps 1 and 2 for the remaining U-bolts and yoke strap assemblies.

Figure 11



CAUTION: The 360 Y-DROP boom assembly may weigh up to 150 lbs. (68 kg). Exercise caution and enlist help for this process.

Using a suitable lifting device, remove the 360 Y-DROP system's boom assembly (1) from the Z-bar assembly.

Figure 12

Using a suitable lifting device, install the 360 Y-DROP system's boom assembly (1) onto the 360 Y-DROP boom brackets.



Figure 10



Figure 11

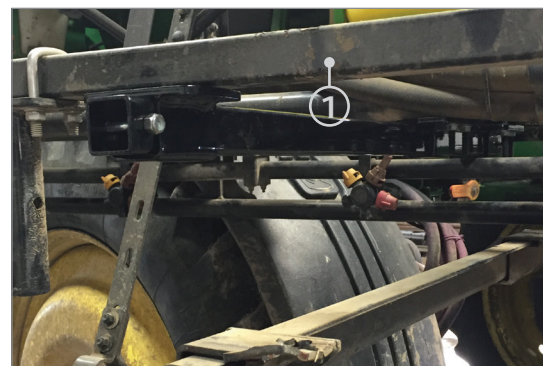


Figure 12

V. REMOVE Z-BAR AND COMPONENTS

The Z-bar and its components will not be used with the Square Tube Upgrade, so remove and discard them.

Figure 13

Step 1 Remove each upper yoke pin and yoke strap assembly (1).

Figure 14

Step 2 Remove nuts (1) and each Z-bar and Z-bar bracket assembly (2).

Step 3 Discard the Z-bar.

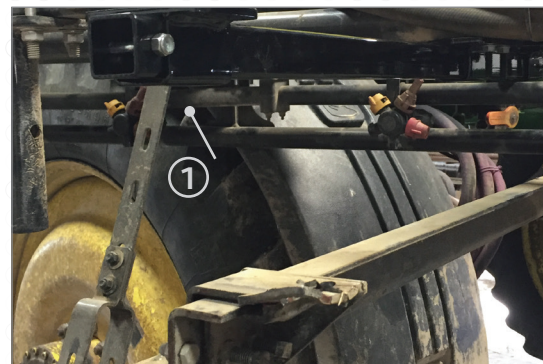


Figure 13

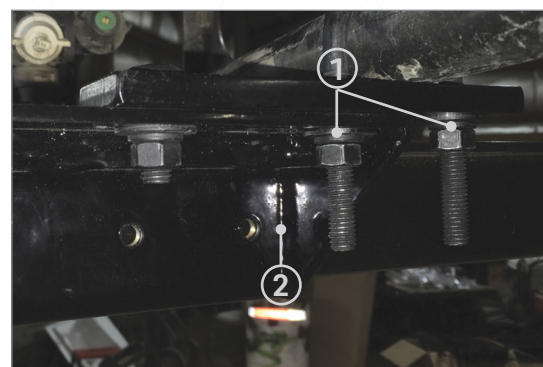


Figure 14

VI. INSTALL CENTER SECTION SQUARE TUBE UPGRADE

In preparation for the center section installation:

Figure 15

Step 1 Remove pin (1).

Step 2 Remove riser tube assembly (2).

Step 3 Remove U-bolt (3).

Repeat Steps 1-3 for the remaining riser tube assemblies.



CAUTION: The 360 Y-DROP system's boom assembly may weigh up to 60 pounds (27 kg). Exercise caution.

Step 4 Use a suitable lifting device to remove the 360 Y-DROP system's boom assembly (4).

Figure 16

Step 5 Remove nuts (5) and lower Z-bar assembly (6) and plate (7) for each center section Z-bar assembly.

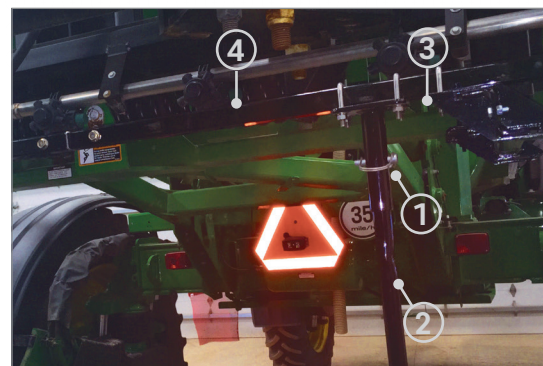


Figure 15

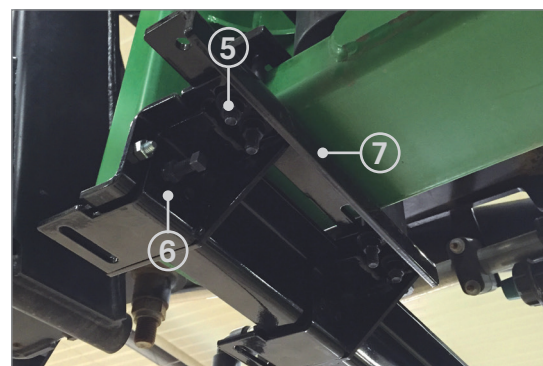


Figure 16

VI.

INSTALL CENTER SECTION
SQUARE TUBE UPGRADE (continued)

Figure 17

Step 6 Install 6-inch top plate (1) and 14-inch top plate (2) using the supplied hardware.

Step 7 Install bracket assemblies (3).

Figure 18

Step 8 Install extension tube (1).

Step 9 Install Y-DROP boom bracket (2)
on extension tube (1).

Bag BB

Step 10 Install stop bolt assemblies (3).
Hardware Kit B within Bag BB

Figure 19



CAUTION: The 360 Y-DROP system's boom assembly may weigh up to 60 pounds (27 kg). Exercise caution.

Step 11 Use a suitable lifting device to install the
360 Y-DROP system's boom assembly (1).

Step 12 For all U-bolt assemblies, install U-bolts (2)
with the threads pointing down and attach
the washers and nuts.

Hardware Kit A within Bag BB

Figure 20

Step 13 Install set screw (1) and stop bolt assemblies (2).
Hardware Kit D within the Center Section Kit

Repeat steps 6-13 for the remainder of the center section
square tube.

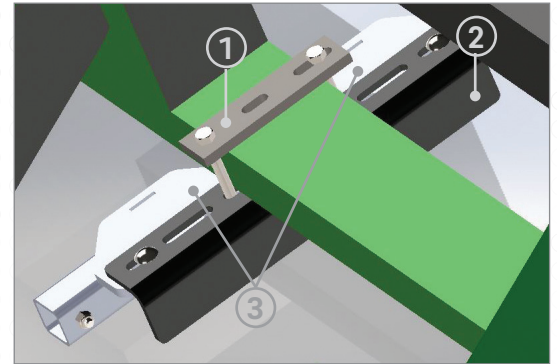


Figure 17

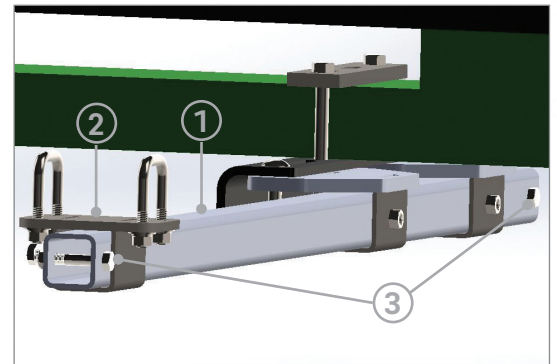


Figure 18

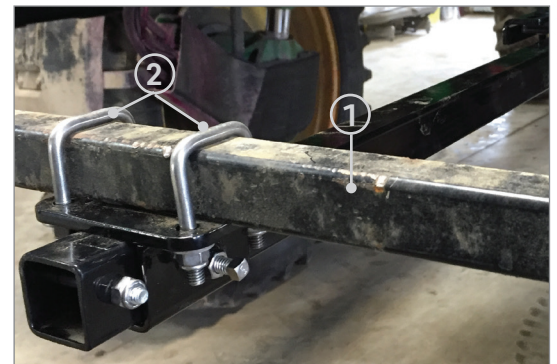


Figure 19

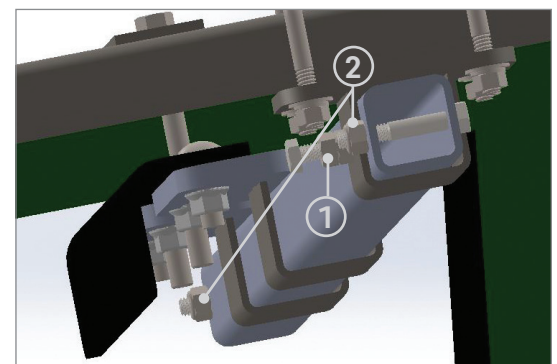


Figure 20

VII. INSTALL PRIMARY BOOM RISER TUBE ASSEMBLIES

For each riser tube assembly on the OEM primary boom:

Figure 21

- Step 1** Install 10" extension (2) onto the primary boom.
- Step 2** Reinstall pin (1) from the original riser tube assembly.
- Step 3** Install riser extension connector (4).
- Step 4** Install 3/8" x 1-3/4" bolt assembly (3) with the flange nut.
- Step 5** Reinstall riser tube assembly (6) from the original Y-DROP.
- Step 6** Install 3/8" x 1-3/4" bolt assembly (5) with the flange nut.
- Step 7** Confirm that the riser mounts are still aligned correctly. From the center of machine, measure appropriate distance, based on row spacing, and tighten U-bolts on riser mount brackets. Quantity and spacing will depend on your system configuration and application profile.

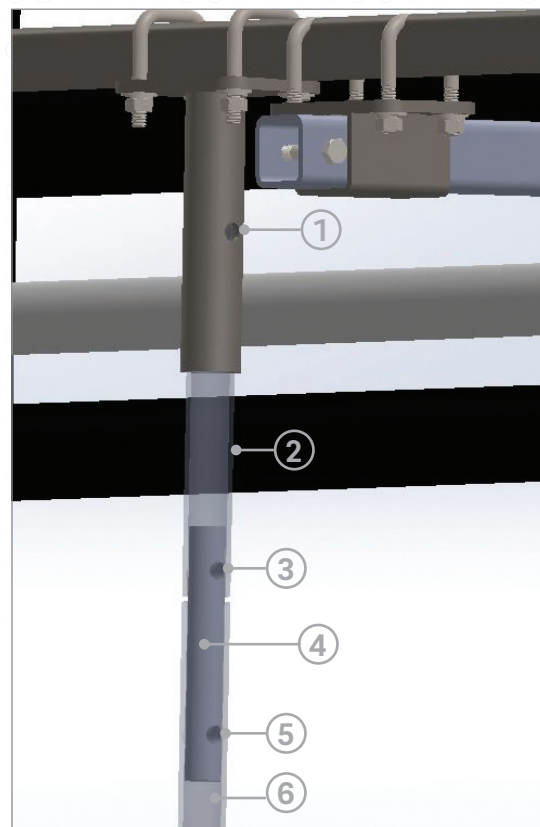


Figure 21

⊕ INSTALLATION COMPLETE.

