



INSTRUCTIONS 360 Y-DROP® SQUARE TUBE UPGRADE

CASE 120' BOOM

INSTRUCTIONS

360 Y-DROP

SQUARE TUBE UPGRADE

CASE 120' BOOM



Figure 1 Before upgrade



Figure 2 Upgrade completed

⊕ RECOMMENDED TOOLS

- + Ratchet wrench with 1/2" and 9/16" deep well sockets
- + 3/8" 12-point socket
- + 1/2" and 9/16" combination wrenches

⊕ TORQUE VALUES

- + Refer to these torque values when tightening all fasteners

+ 5/16" stainless	U-bolt	15 ft/lbs
+ 5/16" stainless	Set screw	15 ft/lbs
+ 3/8" carbon	U-bolt	35 ft/lbs
+ 5/16" carbon	U-bolt	30 ft/lbs
+ 5/16" carbon	Stop bolt	30 ft/lbs

⊕ QUESTIONS

- + Call our Product Support team at 888-512-4890

I. REMOVE RISER TUBE ASSEMBLIES

Follow these steps to remove each riser tube assembly:

Figure 3

Step 1 Remove pin (1).

Step 2 Remove riser tube assembly (2).

Repeat Steps 1-2 for all riser tube assemblies.

Retain riser tube assemblies for later reinstallation.



Figure 3

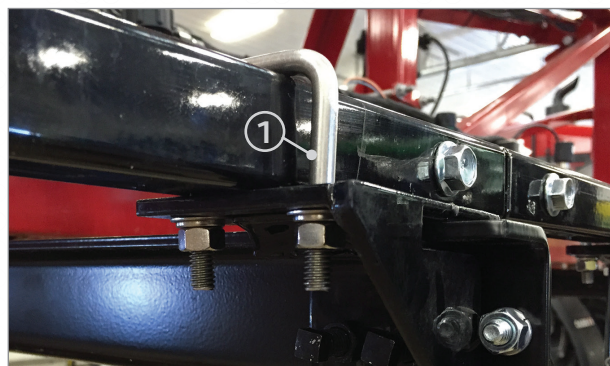


Figure 4

II. INSTALL MOUNT ASSEMBLIES ON THE OEM PRIMARY BOOM

NOTE: Replace one Z-bar assembly at a time. The square tube upgrade mount assemblies will be installed in the same location.

Figure 4

Step 1 Remove U-bolt (1).

Figure 5

Step 2 Remove pins (1) and yoke strap assembly (2). Repeat for remaining yoke strap assemblies.

NOTE: These yoke strap assemblies will not be used for the square tube upgrade and may be discarded.



Figure 5

II.

INSTALL MOUNT ASSEMBLIES
ON THE OEM PRIMARY BOOM *(continued)*

Figure 6

- Step 3** Remove two nuts (1), 6" plate (2), Z-bar (3) and bracket assembly (4). Repeat for the remaining mount assemblies on the OEM primary boom.

Figure 7

Figure 7 shows size and location of U-bolts for OEM primary boom. The opposite arm of the central section will follow the same pattern as the arm shown.

Figure 8

- Step 4** With the threads pointing up, install U-bolt (1) on the bottom side of the OEM primary boom.
- Bag AA
- Step 5** Install bracket assembly (2) and flange lock nut (3).
- Hardware Kit D

Repeat Steps 4 and 5 for the other OEM mount bracket kit.

Bag AA

- Step 6** Install extension tube (4).
- Step 7** Install boom bracket (5) onto the extension tube.
- Step 8** Install stop bolts (6) at both the front and the rear of the extension tube.
- Hardware Kit B

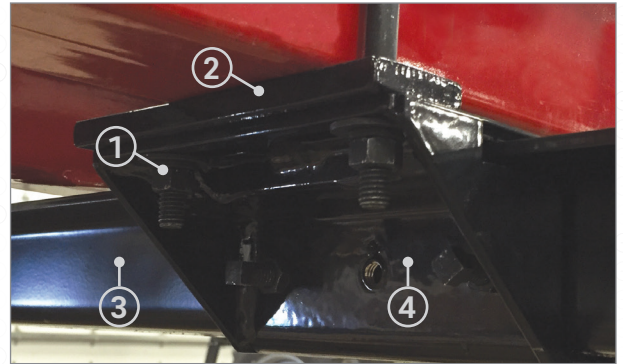


Figure 6

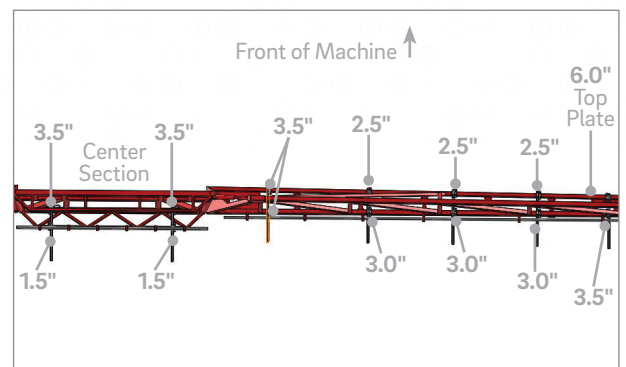


Figure 7

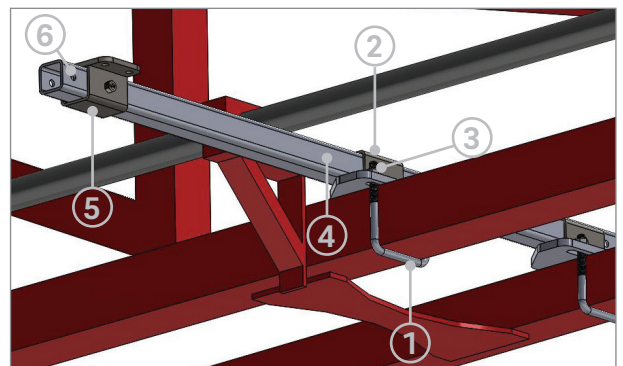


Figure 8

II.

INSTALL MOUNT ASSEMBLIES
ON THE OEM PRIMARY BOOM *(continued)*

Figure 9

Figure 9 shows the positioning for the strap (1) and two 3/8" bolts and flange nuts (2) used for the OEM mount bracket on the outside mount of the primary boom.

Figure 10

Step 9 Install stainless steel set screw and jam nut assemblies (1) onto the bracket assemblies.

Hardware Kit D

Repeat Steps 1-9 for the remaining mount assemblies on the OEM primary boom.

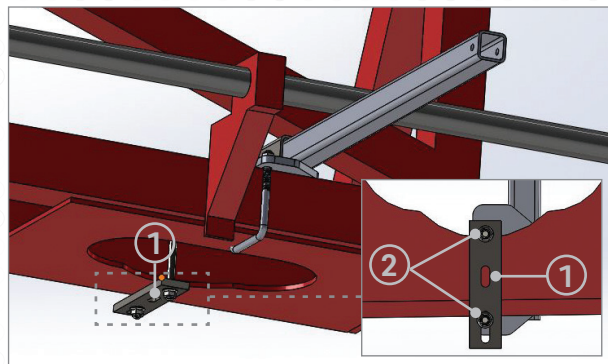


Figure 9

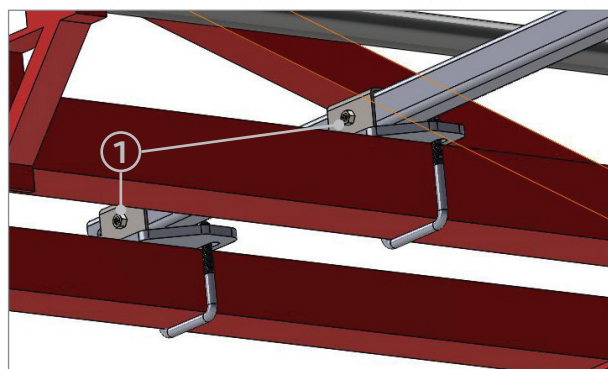


Figure 10

III.

INSTALL CENTER SECTION
SQUARE TUBE UPGRADE

In preparation for the center section installation:

Figure 11

Step 1 Remove bolts (1), 6" Plate (2), Z-bar (3) and bracket assembly (4). Repeat for the left-hand mount assembly on the OEM center section.

Figure 12

Step 2 With the thread pointing up, install U-bolt (1) on the OEM center section boom.
Bag AA

Step 3 Place bracket assembly (2) into position and install 3/8" flange nuts (3).

Repeat Steps 2 and 3 for the rear mount (4).

Step 4 Install extension tube (5) onto bracket assemblies (2) and (4).

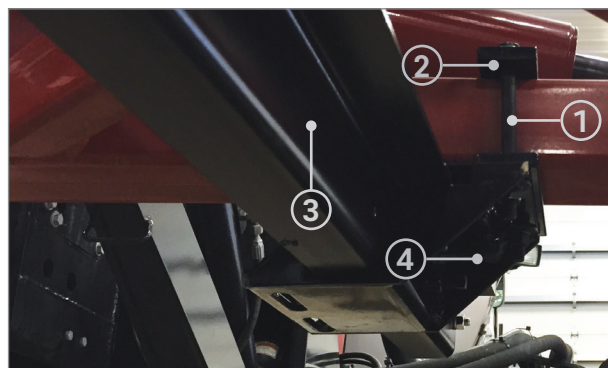


Figure 11

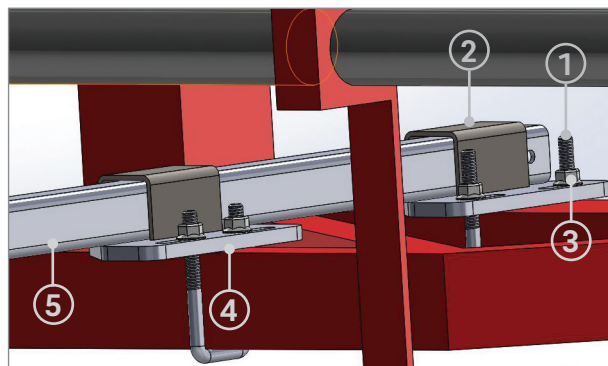


Figure 12

III.

INSTALL CENTER SECTION
SQUARE TUBE UPGRADE *(continued)*

Figure 13

Step 5 Install boom bracket (1) onto extension tube (2).

Step 6 Install stop bolts at both the front and the rear of the extension tube (3).

Hardware Kit B

Step 7 Install stainless steel set screw and jam nut assembly in boom bracket (4).

Repeat Steps 5-7 for left-hand mount on OEM center section.

Figure 14

Step 8 Install boom sections with riser mounts onto boom brackets (1).

Step 9 Install square U-bolt (2), the 5/16" extra thick washers, and the 5/16" nuts. Repeat for all boom brackets.

Hardware Kit A

Step 10 Reinstall riser tube assembly (3) and secure with pin from those removed earlier. Repeat for remaining riser tube assemblies.

Repeat Steps 8-10 for the left-hand primary boom and OEM center section.

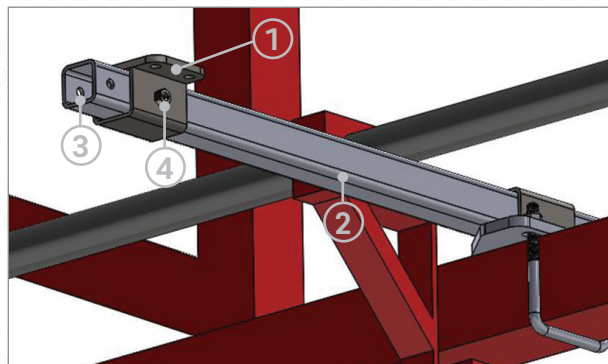


Figure 13

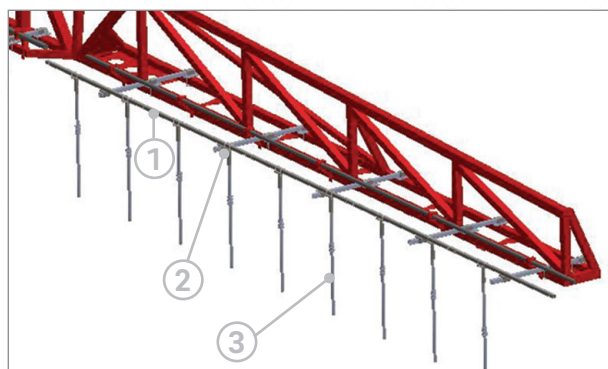


Figure 14

⊕ INSTALLATION COMPLETE.

