



IMPORTING SHAPEFILES INTO 360 YIELD PATROL

IMPORTING SHAPEFILES INTO 360 YIELD PATROL

⊕ QUICK TIPS

- + 360 YIELD PATROL is meant to work with field boundaries, SSURGO soil type zones, and GPS points.
- + Shapefiles for boundaries and zones must contain only polygon data. Complex shapefiles with very large number of polygons and/or polygons made up of a very large number of location points may result in the app responding slowly or crashing.
- + Layers created from planter or yield monitor data may contain extra point data that is not part of a zone or field boundary. This can cause 360 YIELD PATROL to crash when trying to import those files.
- + The zip file should contain only the files (.shp, .shx, .dbf, .prj) of the shapefile. No other files or folders.
- + Zip files created on a Mac may contain an extra folder named MACOSX. This folder is not visible on the Mac, but appears when unzipping the file on other systems which will cause a crash.

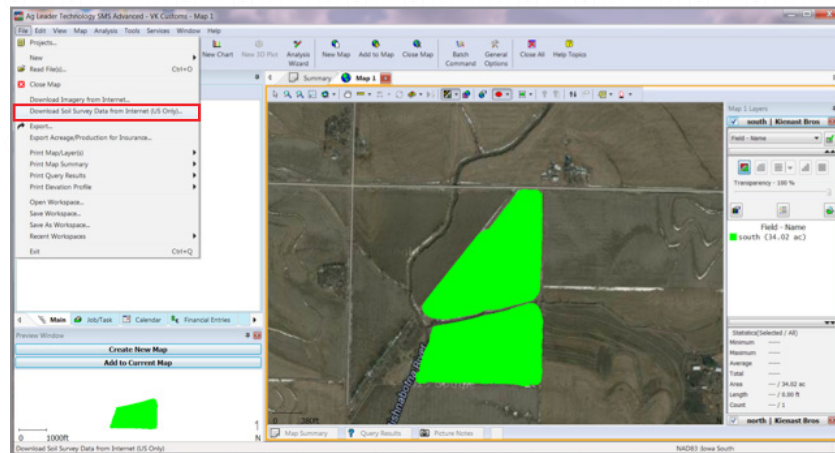
⊕ QUESTIONS

- + Call our Product Support team at 888-512-4890.

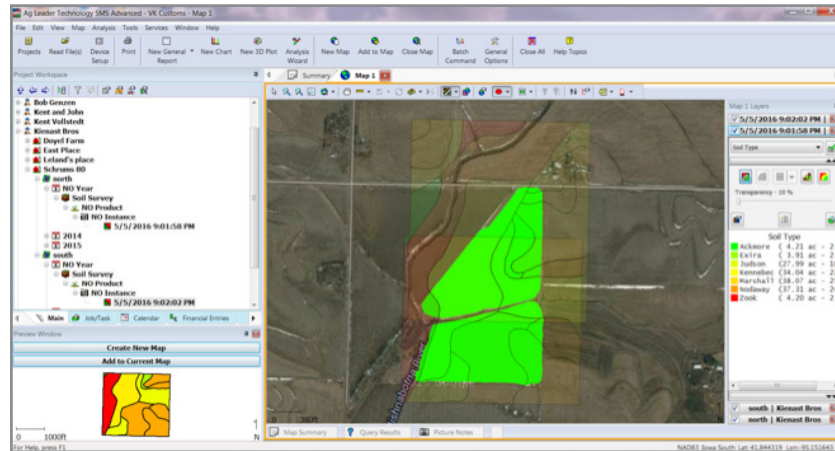
I. STEPS TO IMPORT SHAPEFILE ZONES

Step 1 Import SSURGO soil zones into a data management system such as Apex, Farmworks, SMS (shown below), etc.

If using SMS as your data management system, go to the **File** menu and select **Download Soil Survey Data** to add in SSURGO zones (see image below).



Map with SSurgo data.



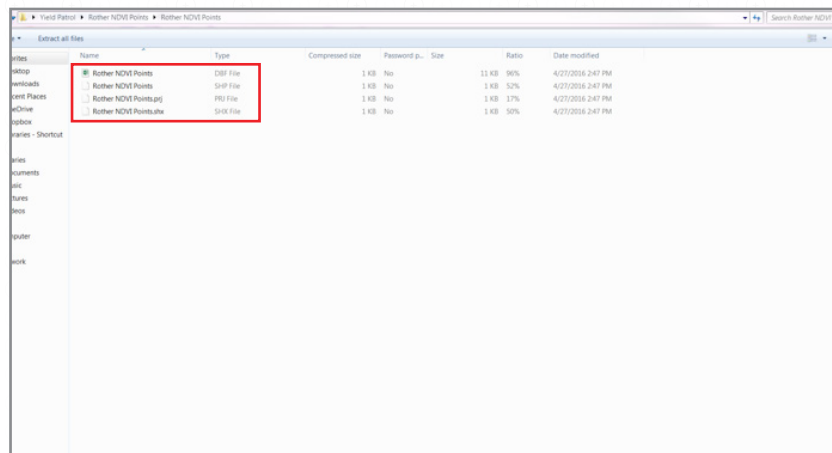
Step 2 Export the SSURGO file from the data management system in the shapefile format (.shp).

NOTE: The shapefile includes additional files with .shp, .shx, .dbf, and may also include a .prj file.

I. STEPS TO IMPORT SHAPEFILE ZONES (CONTINUED)

Step 3 Zip the .dbf, .shp, .prj, and .shx files together.

NOTE: These should include either polygons or points, but not both. Mixing the two together can cause the app to crash when importing.



Step 4 Upload the zipped file into Google Drive or Dropbox.

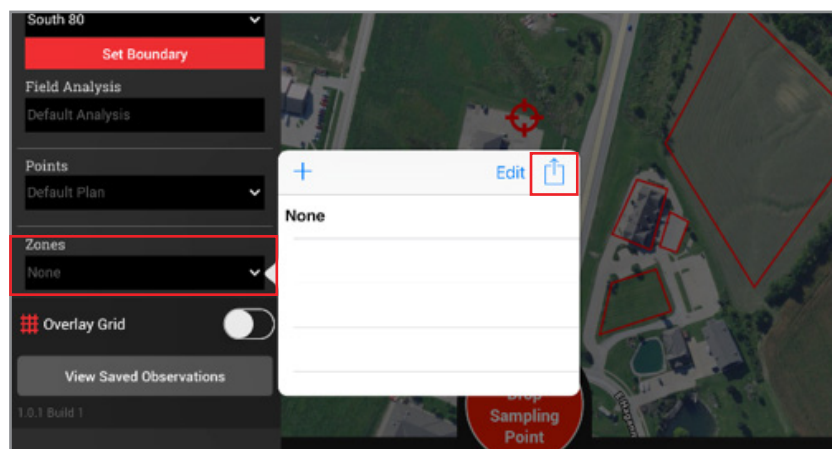
NOTE: Files must be uploaded into Google Drive or Dropbox in order to be accessed in the 360 YIELD PATROL App.

Step 5 Open the **360 YIELD PATROL App**.

Step 6 Once in the 360 YIELD PATROL App, click on the menu button

Step 7 Fill in **Farmer**, **Farm**, and **Field** categories.

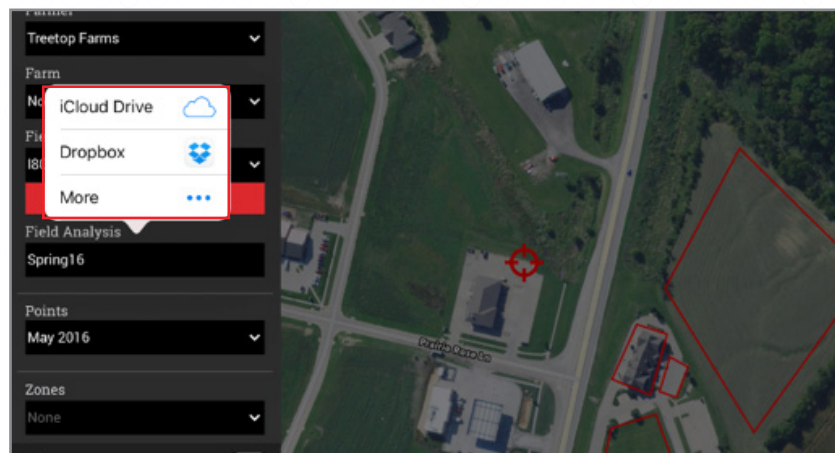
Step 8 Under the **Zones** dropdown, choose the upload icon to upload polygons and add your field boundary or management zones.



I. STEPS TO IMPORT SHAPEFILE ZONES (CONTINUED)

Step 9 The **Import Zones** dialog box will appear and instruct you to **Enter Zone Name**. Enter a Zone Name and press the **OK** button.

Step 10 A dialog box will appear with options for places from which to import files (**iCloud Drive**, **Dropbox**, or **More** which includes Google Drive). Select the option that you uploaded your Zipped file to in Step 4.



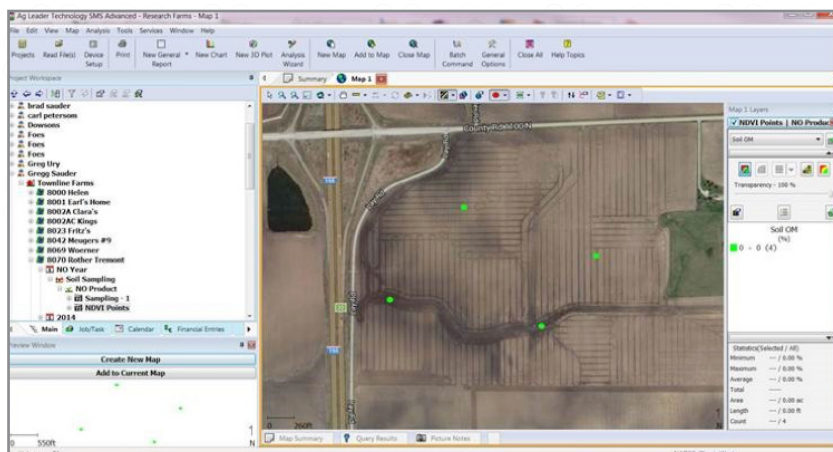
Step 10 From the correct drive, select your zipped file and begin upload.

⊕ IMPORT SHAPEFILE ZONES COMPLETE.

II. STEPS TO IMPORT SHAPEFILE SAMPLING POINTS

NOTE: The process to create sampling points is different than zone based management.

Step 1 In your data management system, create a new sampling layer using a base layer that helps you decide where you want to drop a sampling point.

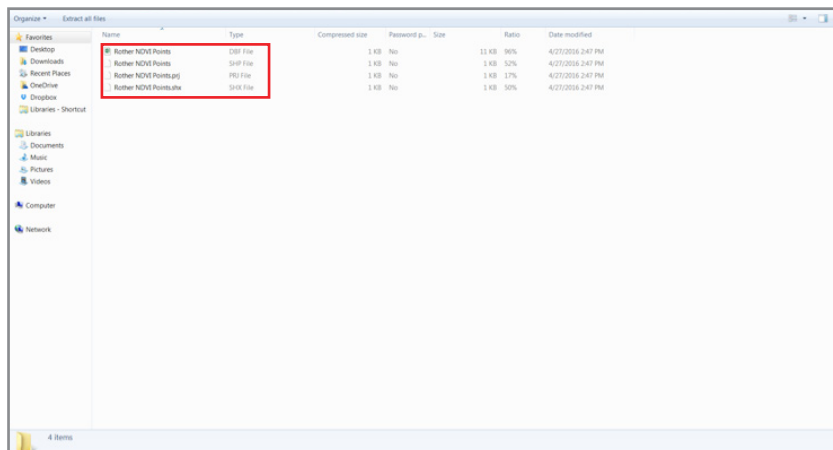


Step 2 Export the field zone/management file from the data management system into shapefile format (.shp).

NOTE: The shapefile includes additional files with .shp, .shx, .dbf, and may also include a .prj file.

Step 3 Zip the .dbf, .shp, .prj, and .shx files together.

NOTE: These should include only geo locations (latitude/longitude). Mixing these files with polygons can cause the app to crash when importing.



II. STEPS TO IMPORT SHAPEFILE SAMPLING POINTS (CONTINUED)

Step 4 Upload the zipped file into Google Drive or Dropbox.


NOTE: Files must be uploaded into Google Drive or Ddropbox in order to be accessed in the 360 YIELD PATROL App.

Step 5 Open the **360 YIELD PATROL App**.

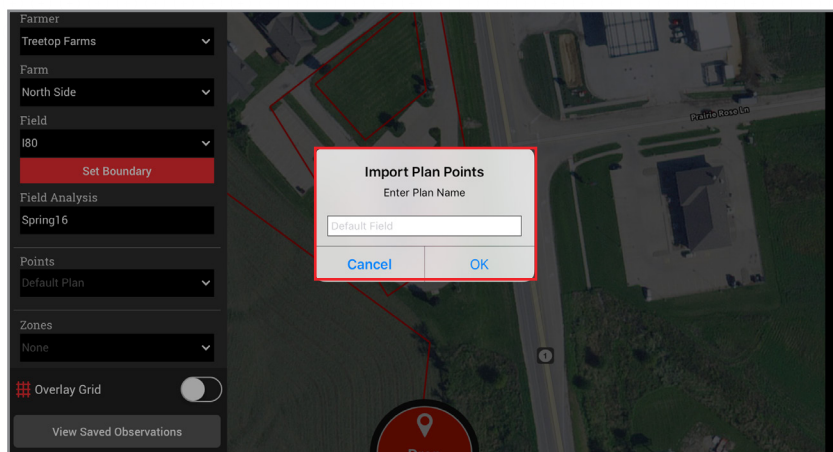
Step 6 Once in the 360 YIELD PATROL App, click on the menu button  .

Step 7 Fill in **Farmer**, **Farm**, and **Field** categories.

Step 8 Under the **Points** dropdown, choose the upload icon  to upload points

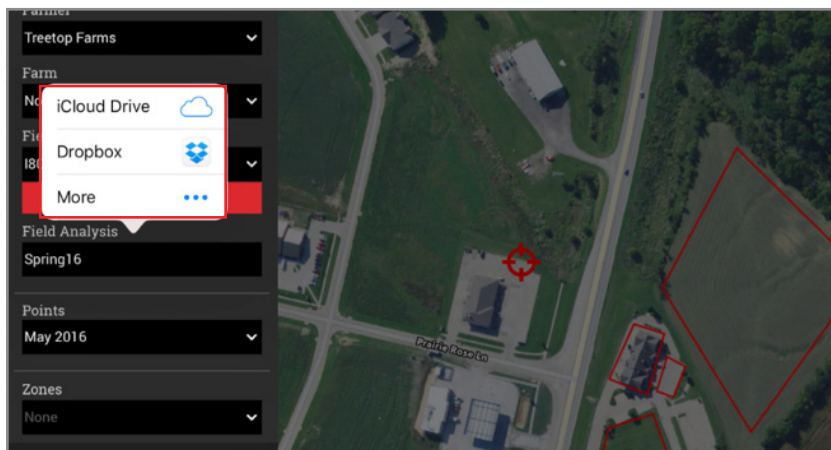
NOTE: If zone based maps are desired, upload them by selecting the **Zones** dropdown and choosing the upload icon  to upload zone based maps.

Step 9 The **Import Plan Points** dialog box will appear and instruct you to **Enter Plan Name**. Enter a Plan Name and press the **OK** button.



II. STEPS TO IMPORT SHAPEFILE SAMPLING POINTS (CONTINUED)

Step 10 A dialog box will appear with options for places from which to import files (**iCloud Drive**, **Dropbox**, or **More** which includes Google Drive). Select the option that you uploaded your Zipped file to in Step 4.



Step 11 From the correct drive, select your zipped file and begin upload.

⊕ IMPORT SHAPEFILE SAMPLING POINTS COMPLETE.