



2015 360 Y-DROP ASSEMBLY INSTRUCTIONS

CASE 80'/90' BOOM

It's important to know where each mounting bracket fits up, relative to the row spacing of the crop that will be serviced. The first position a 360 Y-DROP & 360 UNDERCOVER unit should be placed is the very center of the machine. This is critical in understanding the assembly of the system to the sprayer. This will give good guidance for mounting the system to your sprayer boom. There are, however, numerous permutations of booms among all sprayer models; it could very well be that your sprayer is not identical to the model in the following steps of the guide and pictures may differ from yours. While these steps will help you install most of your 360 Y-DROP system, you may need to custom fit some components, based on your particular boom.



1. From center of the machine, there are five (5) mounting zones on each of the primary side booms (first fold) in which the mounting brackets will be installed. This depends on the width of your boom and account for both 20" & 30" row spacing.
Extend the right and left primary booms (first fold) and measure from machine center, marking both ends of each of the following zones on both right and left primary booms:

1. Zone 1: 80"-90" from center
2. Zone 2: 120"-140" from center
3. Zone 3: 180"-200" from center
4. Zone 4: 240"-260" from center
5. Zone 5: 300"-320" from center



2. Assemble mounting bracket in Zone 1 on the boom and leave loose, shown in Fig 2.

1. One (1) 6" z-slider bracket
2. Two (2) 5" top plates
3. Two (2) 3/8" x 4" bolts
4. Four (4) 3/8" flat washers
5. Two (2) 3/8" lock washers
6. Two (2) 3/8" nuts.

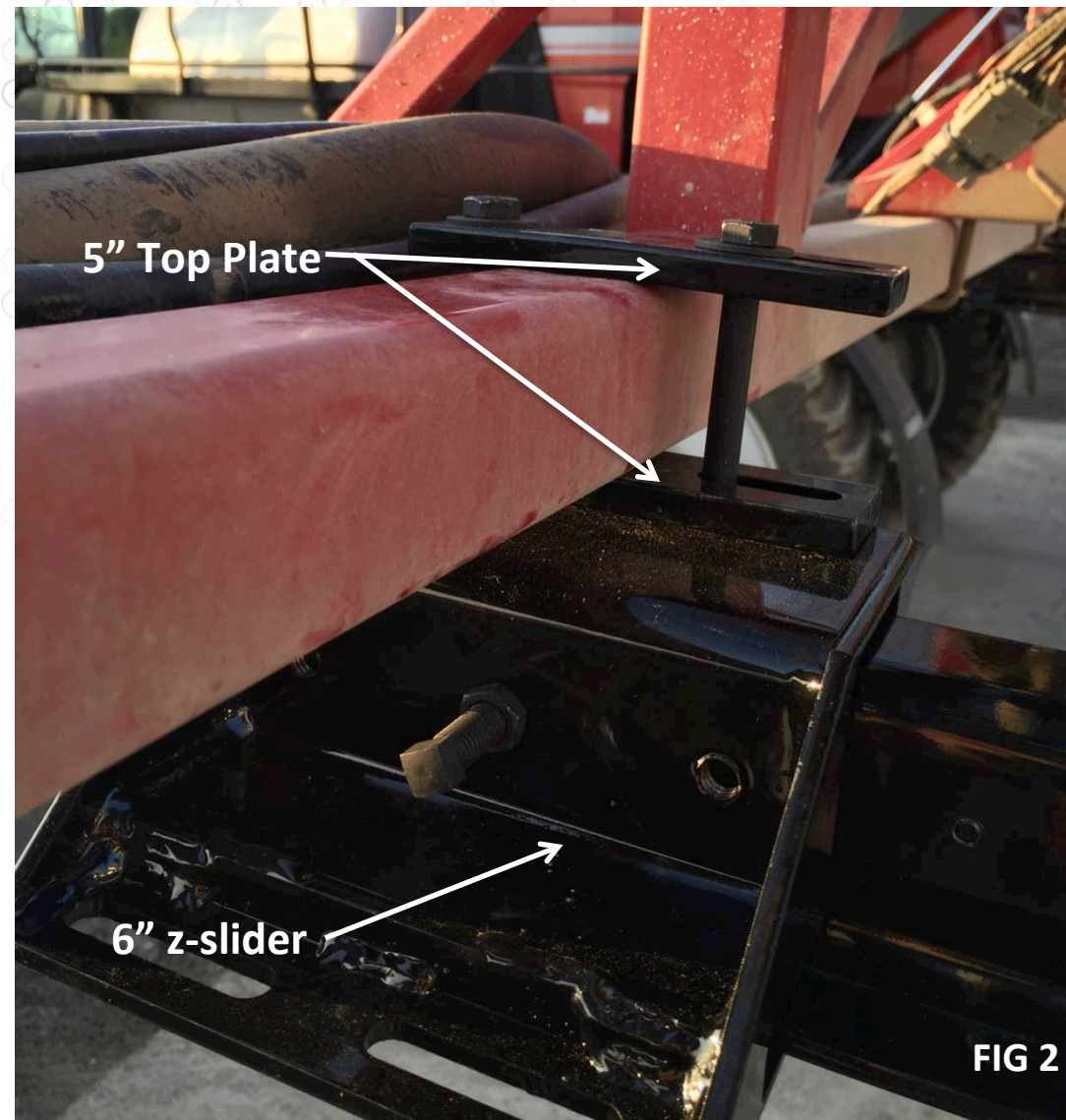


FIG 2

3. Install remainder of the mounting brackets in Zones 2 through 5 and leave loose, shown in FIG 3:

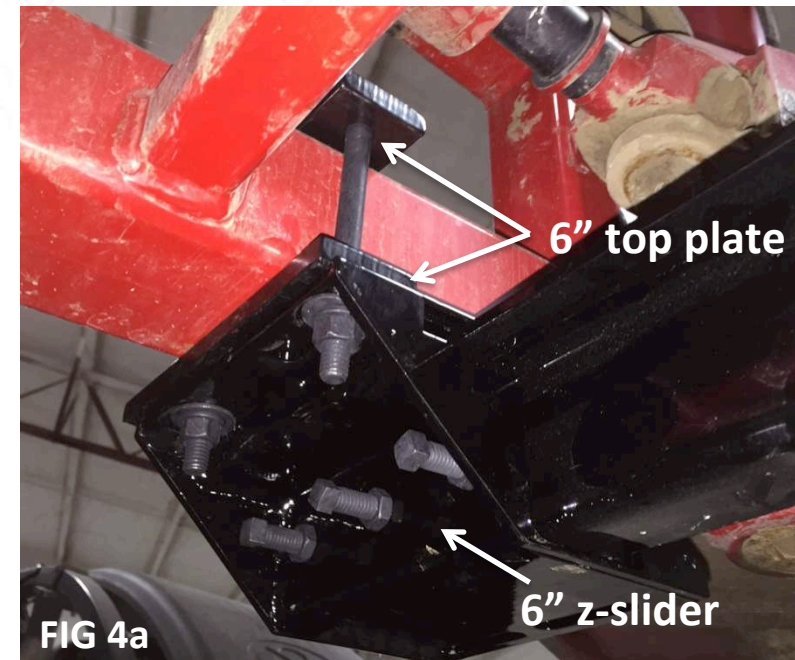
1. One (1) 6" z-slider bracket
2. Two (2) 5" plates
3. Two (2) 3/8" x 4" bolts
4. Four (4) 3/8" flat washers
5. Two (2) 3/8" lock washers
6. Two (2) 3/8" nuts

4. Space all five sets of mount brackets nominally 60" apart, fold boom to check clearances and tighten. Distances between brackets may vary, depending on your specific boom. Be sure to take into account where your drops will fall.

5. Repeat STEPS 2 - 4 on the other boom fold.

6. Install two (2) mounting brackets on center section and tighten, right side is shown in FIG 4a, 4b & 4c:

1. Two (2) 6" z-slider brackets
2. Four (4) 6" plates
3. Four (4) 4.5" bolts
4. Eight (8) 3/8" flat washers
5. Four (4) 3/8" lock washers
6. Four (4) 3/8" nuts





7. **Install z-bars and stop bolts in all 12 z-brackets, leave loose and carefully fold sprayer booms into cradle to adjust fore/aft locations.**

1. Twelve (12) 38" z-bars
2. Twelve (12) 5/16" x 3/4" stop bolts and nuts

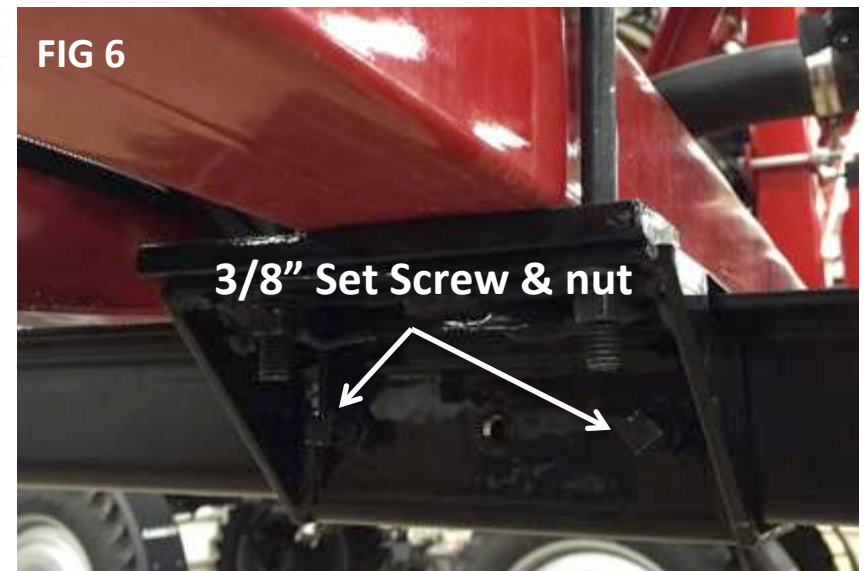
8. **Install 3" z-slider brackets and stop bolts on all z-bars, shown in FIG 5:**

1. Twelve (12) 3" z-slider brackets
2. Twelve (12) 5/16" x 3/4" stop bolts and nuts



9. **Install and tighten 3/8" set screws with jam nuts in all z-slider brackets, shown in FIG 6 (three per 6" z-slider, two per 3" z-slider):**

1. (60) 3/8" set screws
2. (60) 3/8" jam nuts



10. On both the left and right boom wings, assemble four (4) 5' boom sections with 8" connector bars using provided hardware. Another 5' boom section will need to be field cut in half to extend the length needed for all 24Rx30" or 36Rx20" drops. Assemble this shorter section to the inner part of both boom folds. In total, the 360 Y-DROP boom should span 22-1/2 feet, example shown in FIG 7. The center section will take (2.5) 5' boom sections. Cap the ends of boom sections with rubber cap.

1. 5' Boom Section
2. 8" connector bar
3. 3/8" x 1-3/4" stainless steel flange bolt
4. 3/8" flat washer
5. 3/8" lock washer
6. 3/8" nut
7. 1-1/4" square rubber cap



11. **Assemble (8) 2-section yokes** to be used as support straps from 360 Y-DROP boom to left & right upper sprayer boom, shown in FIG 8. Note: Length will need to be adjusted to fit distance between booms.

1. (2) 23" Yoke straps
2. (4) Yoke ends
3. (4) 3/8" x 1-1/4" carriage bolts
4. (2) 3/8" x 1-1/4" bolts
5. (6) 3/8" flat washers
6. (6) 3/8" lock washers
7. (6) 3/8" nuts
8. (2) 3.5" locking clip pin



12. **Install (6) 2-Section yokes to both left & right hand sprayer boom and 360 Y-DROP boom, as shown in FIG 9a & 9b, spaced evenly along each side. Adjust length of each yoke as required to support the square 360 Y-DROP boom. Secure with 3.5" locking clip pin at top and bottom of yoke.**



13. Assemble (2) 2-section yokes to center sprayer boom to 360 Y-DROP boom, shown in FIG 10a & 10b. Note: Length will need to be adjusted to fit distance between booms.

1. (2) 23" yoke straps
2. (4) yoke ends
3. (4) 3/8" x 1-1/4" carriage bolts
4. (2) 3/8" x 1-1/4" bolt
5. (6) 3/8" flat washers
6. (6) 3/8" lock washers
7. (7) 3/8" nuts
8. (2) 3.5" locking clip pin



FIG 10

2-Section Yokes



FIG 10b

14. **Assemble riser mount brackets to square boom with stainless steel hardware provided and leave loose, shown in FIG 11. Quantity and spacing will depend on your system configuration and application profile.**
1. Riser mount brackets
 2. 5/16" x 1-3/8" U-Bolts
 3. 5/16" flat washers
 4. 5/16" lock washers
 5. 5/16" nuts
15. **From center of machine, measure appropriate distance, based on row spacing and tighten u-bolts on riser mount brackets.**



FIG 11

16. **Assemble drag hoses to 360 Y-DROP base unit, shown in FIG 12,** using hose clamps provided.



FIG 12

17. **Attach riser tube assembly to 360 Y-DROP base unit using stainless steel wire lock pin, shown in FIG 13a & 13b. Repeat for every drop.**



18. **Attach riser tube assembly / 360 Y-DROP to riser mount bracket on the 360 Y-DROP boom with stainless steel wire lock pin, as shown in FIG 17a & 17b. Repeat for every drop.**
19. **Connect and route riser hoses from 360 Y-DROP base unit up riser and connect to sprayer nozzle body. Zip tie hoses at least every 18" along riser tube.**



14a



14b

