

360 CHAINROLL™ ORDER FORM

360 CHAINROLL™ is available in beta for the 2015 harvest season for retrofit on John Deere 40 series, 90 series and 600 series corn head models. It is a new approach to residue management, and we are excited to see it in the field this fall, to monitor the results and to get feedback from farmers across the Corn Belt. We hope to have 360 CHAINROLL running in various hybrids, various growing conditions and various regions to give us valuable and variable results for product development and production for the 2016 season.

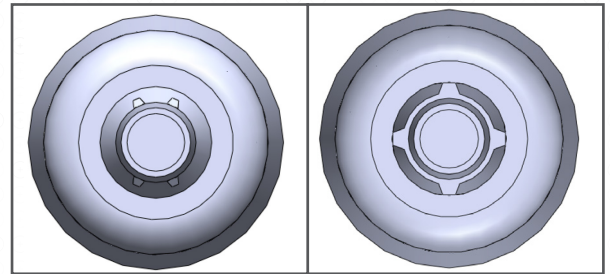


360 CHAINROLL can be purchased through your local 360 Yield Center Dealer using the following form. Units are sold in a per-row kit, which includes a pair of left and right rolls and any necessary hardware. You will also receive anti-seize and thread locker with your order. The retail price is \$950 per row kit. Availability is limited and based on regional demand.

IMPORTANT RETROFIT INFORMATION

- John Deere 40 and 90 series heads are compatible for 360 CHAINROLL retrofit.
- John Deere 600 series heads manufactured AFTER 2012 are compatible for 360 CHAINROLL retrofit.
- Any John Deere 600 series head manufactured BEFORE 2012 must have a John Deere upgraded shaft. How to know:
 - 1) Share the serial number with your John Deere dealer to look up the upgrade information.
 - 2) Inspect the keyway style on the shaft. It should be a plus sign (+) pattern keyway to be compatible with 360 CHAINROLL.See illustration to the right.

600 Series (Before 2012) Compatibility Schematic



NOT COMPATIBLE FOR
RETROFIT: Front view of
incompatible keyway style

COMPATIBLE FOR RETROFIT:
Front view of compatible
keyway style

ORDER INFORMATION

Before securing orders, please talk to your Regional Agronomy Manager to ensure allocation availability of 360 CHAINROLL.

Please fill out all sections. Use multiple lines for multiple corn head orders per farmer.

Corn Head Model (JD 40, 90 or 600 Series)	Corn Head Model Number	Corn Head Model Year	Corn Head Serial Number	If 600 series, Is your corn head compatible with the schematic above? (Yes/No)	Row Unit Kits To Order (Complete Rows)	Retail Price (\$950 / row kit)

ORDER TOTAL: _____

CONTACT INFORMATION AND SIGNATURES

360 Yield Center Dealer Information

Name: _____
Address: _____
City, State, Zip: _____
Phone: _____
Email: _____
Signature: _____

Farmer Information

Name: _____
Address: _____
City, State, Zip: _____
Phone: _____
Email: _____
Signature: _____

Regional Agronomy Manager Name: _____

Ship To Address: _____

Return Form To: 360 Yield Center. Fax to 309-321-8257, scan and email to accounting@360yieldcenter.com or mail to 300 W. Queenwood Rd., Morton, IL, 61550.

CONDITIONS AND DETAILS

- All 360 CHAINROLL purchases must be made through the local 360 Yield Center Dealer and 360 Yield Center Regional Agronomy Manager.
- Orders are processed by the 360 Yield Center Accounting Department and billed through the 360 Yield Center Dealer.
- Units are sold in a per row kit, which includes a pair of left and right rolls and any necessary hardware.
- 360 CHAINROLL is \$950 per row kit.
- 360 Yield Center will allocate available 360 CHAINROLL units to 360 Yield Center Dealers based on regional demand. Availability is not guaranteed to all interested parties in the 2015 beta season.