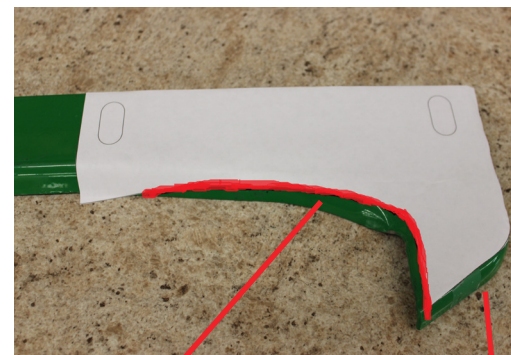


INSTRUCTIONS FOR 360 CHAINROLL™

Trash Knife Rework for John Deere 40 and 90 Series

Some trash knives on the John Deere 40 and 90 series corn heads must be modified to fit up with the new 360 CHAINROLL Stalk Rolls. Use the enclosed Trash Knife Rework Patterns for left and right trash knives and following instructions to modify your trash knives when you reach the rework step in the 360 CHAINROLL Instructions.

If you have any issues along the way, feel free to give us a call at 309-321-0090. Or, jump online for video instructions: 360YIELDCENTER/CHAINROLL.



Cut Along This Edge

Don't Cut This Edge

STEPS FOR TRASH KNIFE REWORK

STEP 1: Clean or buff trash knives before beginning rework to remove any dirt or rust that may inhibit the rework pattern adhesive from sticking to the trash knife.

STEP 2: Peel the adhesive side of the rework pattern from the paper backing.



STEP 3: Apply the adhesive side of rework pattern to the trash knife, ensuring the bolt holes on the trash knife and on the pattern are lined up and the back/straight edges are aligned.



STEP 4: Mark the contour from the pattern with a permanent marker or leave the adhesive pattern on as a guide. The pattern will slope over the contour edge.



STEP 5: Using a grinder or metal cutting tool, remove material from the trash knife up to the marked contour or pattern.



STEP 6: Smooth any sharp edges or corners with a grinder.



STEP 7: The two front bolt slots may need to be extended towards the beveled edge by approximately 1/4", as shown in this picture.

STEP 8: Repeat Steps 1 to 7 for all left and right trash knives for all rows on the corn head.

STEP 9: Continue with reinstalling your trash knives per the 360 CHAINROLL Instructions.

