

# LAUNCH SOFTWARE AND CALIBRATE

## STEP 6

Once the new pH sensor is connected, the 360 SOILSCAN Application software will auto-configure for the pH sensor.

## STEP 7

In the dual calibration bottle, fill each chamber to the fill line with the new NO<sub>3</sub>-N, 7pH Standard Solution (provided) and place onto the 360 SOILSCAN sensing chamber to soak the sensors.

*(Note: The NO<sub>3</sub>-N, 7pH Standard Solution can be used with both the pH and NO<sub>3</sub>-N sensors. However, the old NO<sub>3</sub>-N Standard Solution can only be used for the nitrate sensor and will not work with the pH sensor.)*

## STEP 8

Open your 360 SOILSCAN Application on your iPad®. Under the Calibrate tab, press Next Step: Soak Sensor. Then press Next Step: Calibrate Sensor.

## STEP 9

Follow the instructions in the 360 SOILSCAN Application on your iPad to run new samples through the pH and nitrate sensors.

### IMPORTANT: PLEASE READ BEFORE USING 360 SOILSCAN

To prevent injuries and to avoid damaging 360 SOILSCAN, please read all product safety instructions before using 360 SOILSCAN. For detailed safety instructions, launch your 360 SOILSCAN application, select Settings and navigate to Product Safety. In addition, before using your 360 SOILSCAN, please read all product warranty information by launching your 360 SOILSCAN application, selecting Settings and navigate to Legal.

All trademarks are the property of 360 Yield Center, its affiliates and/or its licensors. iPad is a registered trademark of Apple Inc. Corporation. ©2015 360 Yield Center. All rights reserved. YCG15029

# ASSEMBLY INSTRUCTIONS

## 360 SOILSCAN™ pH SENSOR KIT

### PARTS OVERVIEW

- 360 SOILSCAN™ pH Sensor Kit (Part No. 431038)
  - + pH Sensor Assembly (Part No. 431037)
  - + Calibration Bottle, 2 Sensors (Part No. 432335)
  - + Bottle of NO<sub>3</sub>-N, 7pH Standard Solution (Part No. 432340)
  - + T-25 Torx L-Key (Part No. 4323341)
  - + Nut (Part No. 432264)
  - + Screw (Part No. 432342)

- Use only the NO<sub>3</sub>-N, 7pH Standard Solution with the pH sensor.
- When using a new sensor tip for the first time, the first soil test reading will be inaccurate due to initial sensor adjustments. Simply discard the first test and continue your testing.
- Always soak the sensors in the NO<sub>3</sub>-N, 7pH Standard Solution when not in use.
- For short-term storage (5 days or less), soak the pH sensor in NO<sub>3</sub>-N, 7pH Standard Solution. The dual calibration bottle is fine for this purpose. For long-term storage, fill the pH sensor storage bottle that originally accompanied the pH sensor with NO<sub>3</sub>-N, 7pH Standard Solution and place this onto the end of the pH sensor. Screw the cap tightly in place to the sensor.

Please email [support@360yieldcenter.com](mailto:support@360yieldcenter.com) or call 888-512-4890 if you have questions or need assistance.



## MOVE THE NITRATE SENSOR

### STEP 1

Remove the two screws on the sensor cover on the 360 SOILSCAN™ machine.

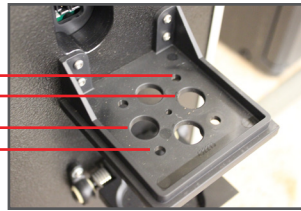


### STEP 2

Move the existing nitrate nitrogen sensor assembly into the sensor body hole located at the 3 o'clock position in the sensor platform; the assembly was previously located at 6 o'clock.

Nitrate Sensor Body Hole & Screw Hole

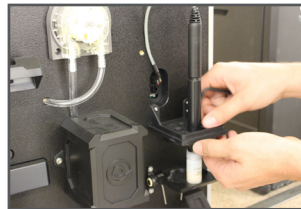
pH Sensor Body Hole & Screw Hole



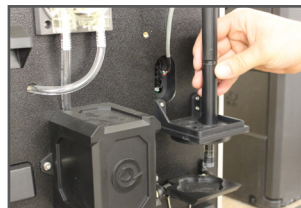
1. To move the sensor assembly, detach the nitrate sensor storage bottle from the sensor tip and pull the cap off the sensor tip.



2. Using the T-25 Torx L-Key provided, unscrew the screw from the nitrate sensor assembly and remove the sensor body from the 6 o'clock position. Insert it into the 3 o'clock position.



3. Fasten the nitrate sensor body with the T-25 Torx L-Key provided. Tighten the screw into the hole to the back of the assembly hole.

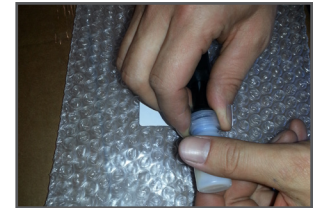


## INSTALL THE pH SENSOR

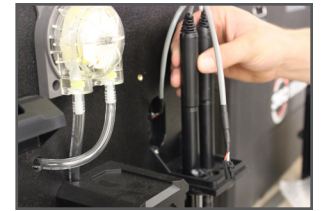
### STEP 3

Insert the pH sensor assembly into the sensor body hole located at the 9 o'clock position in the sensor platform, directly across from the newly located nitrate sensor assembly.

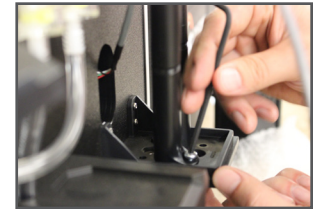
1. Detach the pH sensor storage bottle from the sensor tip and pull the cap off the sensor tip.



2. Insert the pH sensor assembly into the 9 o'clock position on the sensor platform.

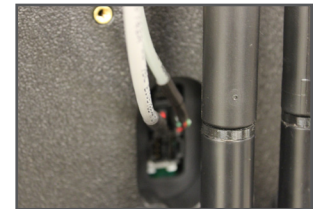


3. Using the T-25 Torx L-Key provided, fasten the pH sensor assembly with the enclosed screw and nut to the sensor platform. Tighten the screw into the hole to the front of the assembly hole.



### STEP 4

Plug the pH sensor into one of the four vertical connectors on the 360 SOILSCAN panel.



### STEP 5

Replace the sensor cover on the 360 SOILSCAN and secure it with the two screws.

