



INSTRUCTIONS 360 Y-DROP® SQUARE TUBE UPGRADE

CASE 80'-90' BOOM

INSTRUCTIONS

360 Y-DROP

SQUARE TUBE UPGRADE

CASE 80'-90' BOOM



Figure 1 Before upgrade



Figure 2 Upgrade completed

⊕ RECOMMENDED TOOLS

- + Ratchet wrench with 1/2" and 9/16" deep well sockets
- + 3/8" 12-point socket
- + 1/2" and 9/16" combination wrenches
- + Impact driver

⊕ QUESTIONS

- + Call our Product Support team at 888-512-4890

I. REMOVE RISER TUBE ASSEMBLIES

Follow these steps to remove each riser tube assembly:

Figure 3

Step 1 Remove pin (1).

Step 2 Remove riser tube assembly (2).

Repeat Steps 1-2 for all riser tube assemblies.

Retain riser tube assemblies for later reinstallation.



Figure 3



Figure 4

II. INSTALL MOUNT ASSEMBLIES ON THE OEM PRIMARY BOOM

NOTE: Replace one Z-bar assembly one at a time. The square tube upgrade mount assemblies will be installed in the same location.

Figure 4

Step 1 Remove U-bolt (1).

Figure 5

Step 2 Remove pins (1) and yoke strap assembly (2). Repeat for remaining yoke strap assemblies.

NOTE: These yoke strap assemblies will not be used for the square tube upgrade and may be discarded.

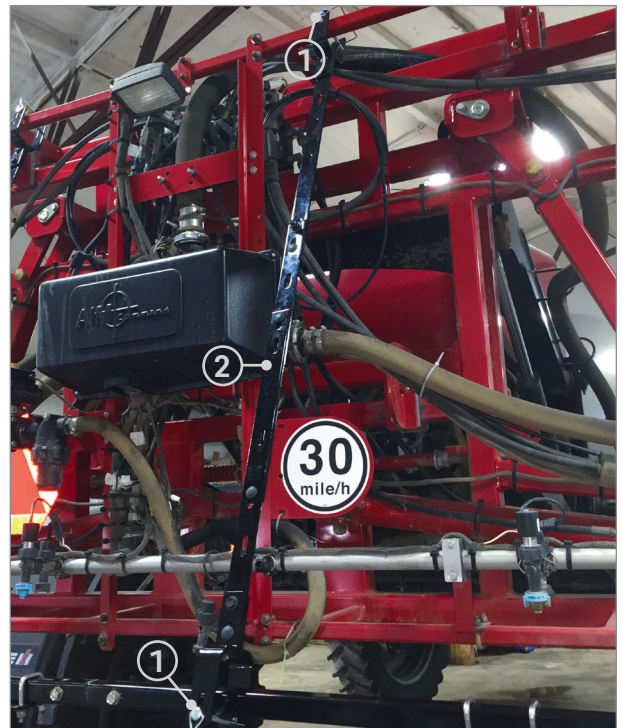


Figure 5

II.

INSTALL MOUNT ASSEMBLIES
ON THE OEM PRIMARY BOOM *(continued)*

Figure 6

Step 3 Remove the two 3/8" bolt assemblies (1), 5" top plate (2), Z-slider (3) and Z-bar (4). Repeat for the remaining mount assemblies on the OEM primary boom.

Figure 7

Figure 7 shows size and location of U-bolts for OEM primary boom. The opposite arm of the central section will follow the same pattern as the arm shown.

Figure 8

Step 4 With the threads pointing up, install square U-bolt (1) on the bottom side of the OEM primary boom.

Bag AA

Step 5 Install bracket assembly (2) and flange lock nut (3).

Hardware Kit D

Repeat Steps 4 and 5 for the other OEM mount bracket kit.

Step 6 Install extension tube (4).

Step 7 Install boom bracket (5) onto the extension tube.

Step 8 Install stop bolts (6) at both the front and the rear of the extension tube.

Hardware Kit B

Step 9 Install stainless steel set screw and jam nut assembly (7).

Repeat Steps 1-9 for the remaining mount assemblies on the OEM primary boom.



Figure 6

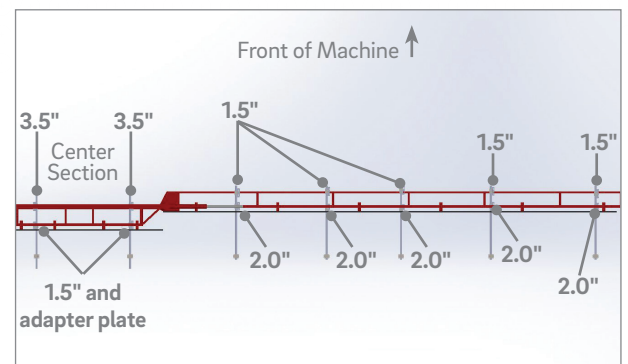


Figure 7

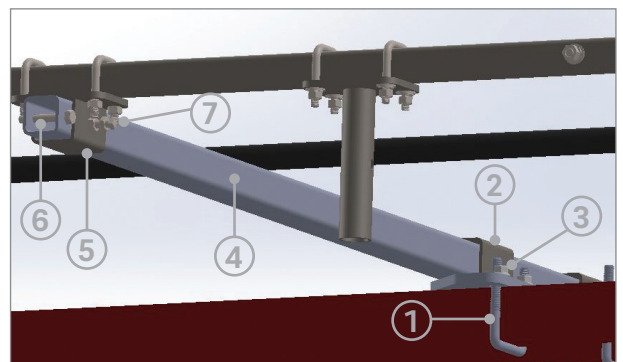


Figure 8

III.

INSTALL CENTER SECTION
SQUARE TUBE UPGRADE

In preparation for the center section installation:

Figure 9

Step 1 Remove the two 3/8" bolt assemblies (1), two 6" top plates (2), Z-slider (3) and Z-bar (4).

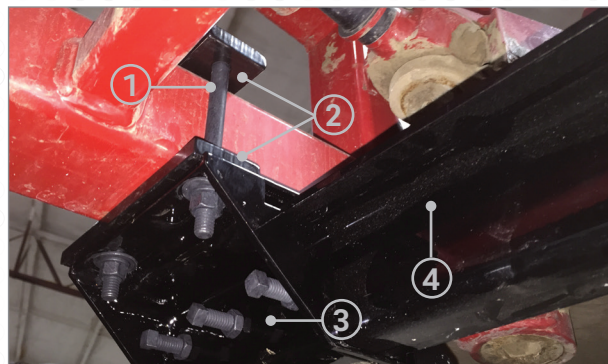


Figure 9

Figure 10

Refer to Figure 7 for U-bolt locations.

Step 2 With the threads pointing up, install square U-bolt (1) on the front OEM center section boom.

Step 3 Place bracket assembly (2) into position and install 3/8" flange nuts (3).

Step 4 With the threads pointing up, install square U-bolt (4) on the rear OEM center section boom.

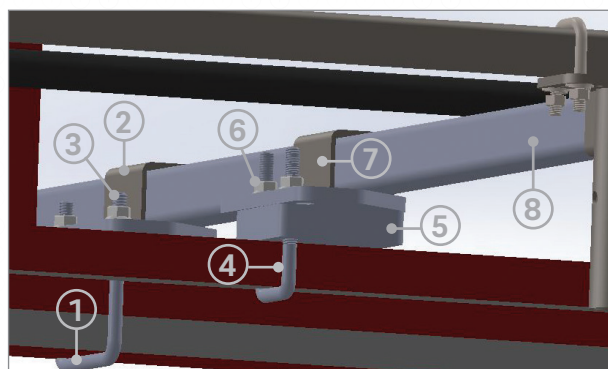


Figure 10

Step 5 Install adapter plate (5) and 3/8" flange nuts (6). Place bracket assembly (7) into position.

Step 6 Install extension tube (8) onto bracket assembly (2) and (7).

Figure 11

Step 7 Install stainless steel set screw and jam nut assembly (1) onto the bracket assemblies.

Hardware Kit D

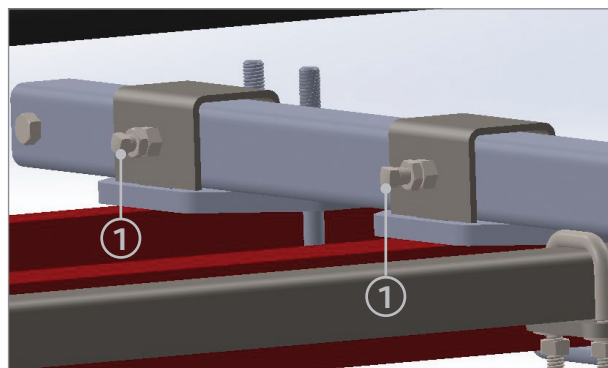


Figure 11

Repeat Steps 1-7 for the remaining mount assemblies on the OEM primary boom and center section.

III.

INSTALL CENTER SECTION
SQUARE TUBE UPGRADE *(continued)*

Figure 12

Step 8 Install square U-bolts (1), the 5/16" extra thick washers and the 5/16" nuts.
Hardware Kit A

Figure 13

Step 9 Install boom sections with riser mounts onto boom brackets (1).

Step 10 Install square U-bolt (2), the 5/16" extra thick washers, and the 5/16" nuts. Repeat for all boom brackets.
Hardware Kit A

Step 11 Reinstall riser tube assembly (1) and secure with pin (3) from those removed earlier. Repeat for remaining riser tube assemblies.

Repeat Steps 9-11 for the left-hand primary boom and OEM center section.

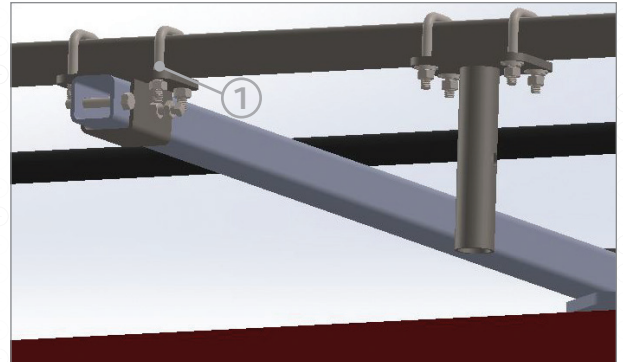


Figure 12

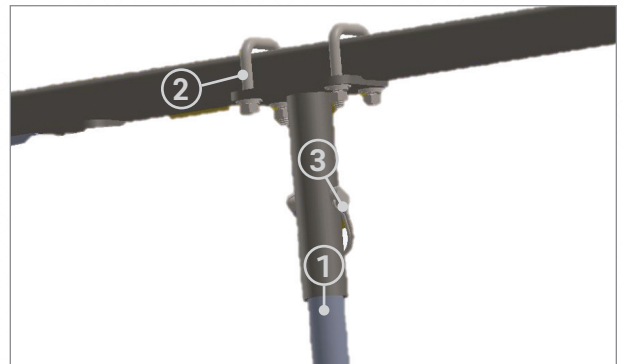


Figure 13

⊕ INSTALLATION COMPLETE.