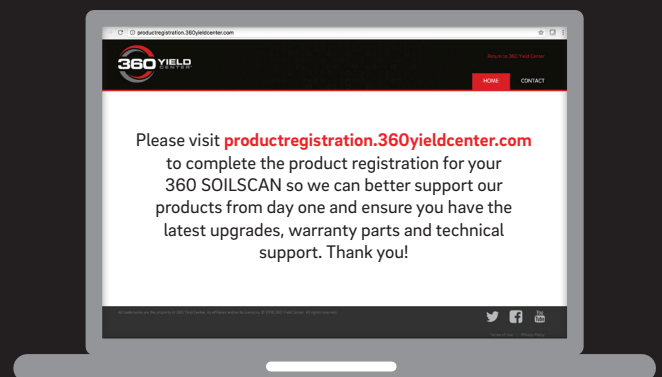




360 SOILSCAN™ SETUP INSTRUCTIONS

360 Y-DROP® REGISTRATION



360YIELDCENTER.COM

V1 - 03.29.2016



360 SOILSCAN™ SETUP INSTRUCTIONS

⊕ IMPORTANT: PLEASE READ BEFORE USING 360 SOILSCAN

- + To prevent injuries and to avoid damaging 360 SOILSCAN, please read all product safety instructions before using 360 SOILSCAN. For detailed safety instructions, launch your 360 SOILSCAN Application, select Settings and navigate to Product Safety. In addition, before using your 360 SOILSCAN, please read all product warranty information by launching your 360 SOILSCAN Application, selecting Settings and navigating to Legal.
- + This device complies with part 15 of the FCC Rules. Operation is subject to the following two conditions: (1) this device may not cause harmful interference, and (2) this device must accept any interference received, including interference that may cause undesired operation.
- + This device complies with Industry Canada licence-exempt RSS standard(s). Operation is subject to the following two conditions: (1) this device may not cause interference, and (2) this device must accept any interference, including interference that may cause undesired operation of the device.

⊕ QUESTIONS

- + If you have questions or need assistance, please email support@360yieldcenter.com or call 888-512-4890.

360 SOILSCAN™ SETUP INSTRUCTIONS

⊕ PARTS OVERVIEW



1. 360 SOILSCAN Unit and Carrying Case (Carrying Case is not pictured.)
2. 12 Volt Power Cable
3. 110 Volt Power Cable
4. Lightning to USB Cable
5. 30-Pin to USB Cable

360 SOILSCAN™ SETUP INSTRUCTIONS

+ PARTS OVERVIEW (continued)



6. NO3-N, 7pH Standard Solution Bottle 500 mL

7. Bottle, Wash

8. NO3-N Storage Bottle

9. Reference Electrode Storage Bottle

10. Calibration Bottle - 4 Compartment

11. Soil Scoop

12. 50 Dixie® Cups - 5 Ounce

13. Mixing Sleeve

NOTE: Parts shown are not to scale.

360 SOILSCAN SETUP INSTRUCTIONS (ORIGINAL - ENGLISH)

Figure 1

Step 1 Plug in power cord.

Figure 2

Step 2 Turn on 360 SOILSCAN unit. The power switch glows red when the unit is turned on.

Figure 3

Step 3 Launch the 360 SOILSCAN App on your iPad. Ensure you have downloaded the 360 SOILSCAN App at <https://itunes.apple.com/us/app/360-soilscan/id956219879?mt=8> and have your iPad 3 or newer device on hand.

Figure 4

Step 4 Select your device. Select your 360 SOILSCAN device from the menu and follow the instructions on the screen.

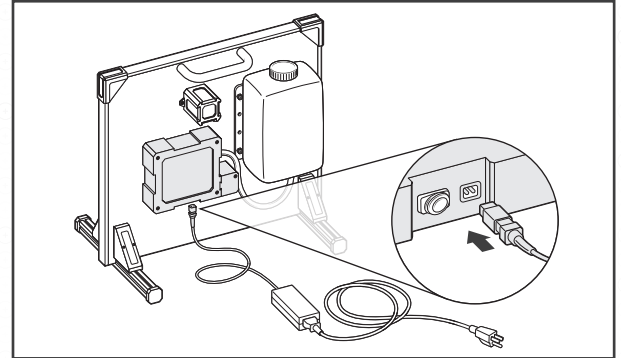


Figure 1

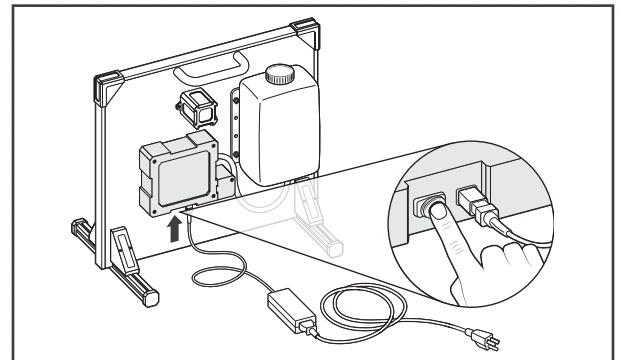


Figure 2

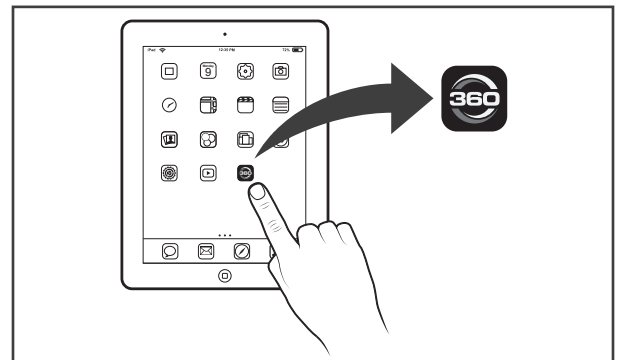


Figure 3

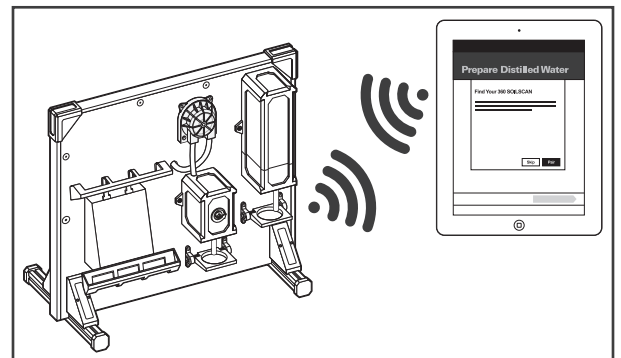


Figure 4

360 SOILSCAN SETUP INSTRUCTIONS (ORIGINAL - ENGLISH) *(continued)*

Figure 5

Step 5

Docking your iPad. Your iPad can be docked to your 360 SOILSCAN. The USB cord provided can be used to power your iPad. The USB cord is not required to connect to your 360 SOILSCAN since it communicates to your iPad wirelessly.

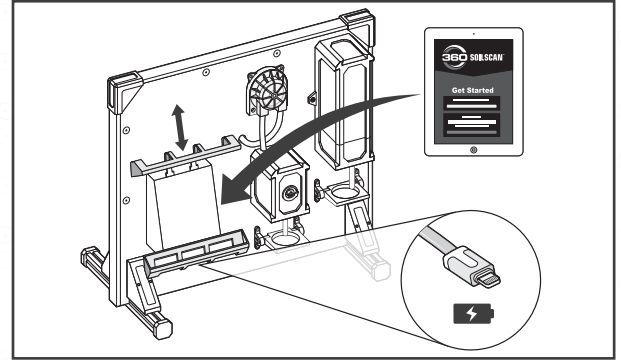


Figure 5

360 SOILSCAN SET UP COMPLETE

Supply Voltage: 12VDC, 5 A

Manufacturer: 360 Yield Center, 180 Detroit, Morton, IL 61550 U.S.A.

Machinery Designation: 360 SOILSCAN

Machinery Description: Soil Testing Device

Storage Temperature: 5 to 50 degrees C

Operating Temperature: 10 to 40 degrees C

MSDS: Go to www.360YieldCenter.com/360-soilscan/msds



360 SOILSCAN STORAGE GUIDELINES

Below are tips for storing your machine for more than 24 hours or over the winter.

- ⊕ Store the NO3-N Sensor (gray) dry. Use the NO3-N Storage Bottle that came with the sensor to cover the tip. Switch to this storage method if the machine will not be used within the next 24 hours.
- ⊕ Fill the small Reference Electrode Storage Bottle $\frac{3}{4}$ full with Standard Solution. Add cap to bottle and insert over electrode (red), making sure electrode tip is immersed in solution. Tighten the cap on the bottle. Switch to this storage method if the machine will not be used within the next 24 hours.
- ⊕ Place the 360 SOILSCAN™ machine and sensors in a mild environment (60°F to 80°F). Do not leave the machine in an unheated shop as exposure to cold temperatures can affect the sensor performance. A good rule of thumb is to treat the machine and sensors similar to how you would treat your iPad.
- ⊕ Standard Solution can be stored at room temperature.
- ⊕ Extra tips that have not been opened should also be stored at room temperature in their original packaging.
- ⊕ For winter storage, make sure the water tank on your machine is empty and the water line is purged.

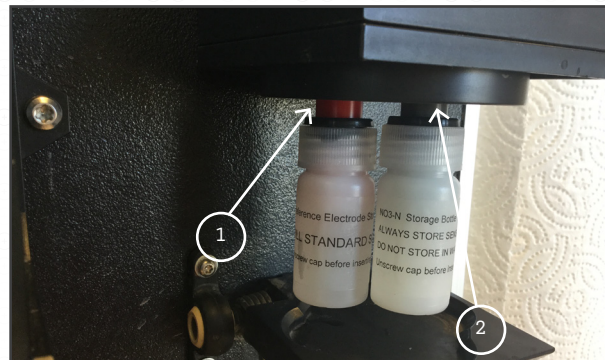


Figure 6: Reference Electrode (1) (Red): Always store wet in the Standard Solution. NO3-N Sensor (2) (Gray): Store dry.



360 SOILSCAN ADDITIONAL PRODUCT INFORMATION AND INSTRUCTIONS

Machine Measurements: 21L x 12W x 19H

Weight: 17.4 kg

Lifting/carrying: When picking up 360 SOILSCAN™, use the handle on the back of the machine.

Safety: Please read and follow all instructions prior to operating equipment. Safety may be impaired if equipment is used in a manner not specified by the manufacturer.

Wear chemical splash safety goggles, chemical-resistant gloves, and a chemical-resistant apron when handling standard solution.

Noise level: Noise levels emitted from the equipment are under 70dBA.



USB PORT

The USB port is intended only for connection to signal circuits from SELV sources of supply such as certified information technology equipment (i.e., computer, touch pads, cell phones, etc.).

The supply connector is intended only for connection to the output of the brick power supply originally provided with the unit or to an accessory outlet of a vehicle through the vehicle supply cord provided with the unit. These devices provide required protection for the equipment for CE compliance and cannot be substituted by other, similar devices. If the supply cord or power supply is damaged, contact the manufacturer for replacement.



MAINTENANCE/SERVICE

Sensor Tip Test: See attached "360 SOILSCAN Sensor Testing".

Proper Storage: See attached "Storage Guidelines for 360 SOILSCAN".

Power supply: Only use 360 Yield Center supplied parts for power supply. Use of unapproved parts may result in damage to the components.

Only use 360 Yield Center parts for servicing unit. Use of unapproved parts may result in damage to components. Regularly inspect all cords and cables. Do not use if any cable or cord is damaged. Replace any damaged cables and cords with only manufactured specified parts.

Only operate the unit in a location where ready access to the supply connection point for disconnection is readily accessible.

Replace fuse only as marked on fuseholder. Use only Type ABC fast acting fuses rated 5A, 125Vdc. Use of higher value fuses may result in fire hazards.

End of life disposal of equipment: Do not place in garbage bin. Take equipment to your nearest electronics recycler for proper disposal.



360 SOILSCAN ADDITIONAL PRODUCT INFORMATION AND INSTRUCTIONS (continued)

⊕ SYMBOLS



Warning: Keep hands/fingers away from mix motor while in progress.



Refer to manual for power connection to the supply.

⊕ RANGE OF ENVIRONMENTAL CONDITIONS

This equipment is intended for indoor or outdoor use. (Do not operate outdoors unless conditions are dry.)

This equipment is designed only for connection sources of supply that are below shock hazard levels in normal and single fault conditions. Connect only to source of supply rated nominal 12V from a vehicle electrical system or to the certified power supply provided with the unit.

Operating Temperature: 10 to 40 degrees C

Altitude: up to 5,000m

Relative humidity: up to 98%

Supply voltage fluctuations= +/-20%; overvoltage Category 1, pollution degree 3.

IP rating: IP2X



All trademarks are the property of 360 Yield Center, its affiliates and/or its licensors.
iPad is a registered trademark of Apple Inc. Corporation.
©2016 360 Yield Center. All rights reserved. YCG16015