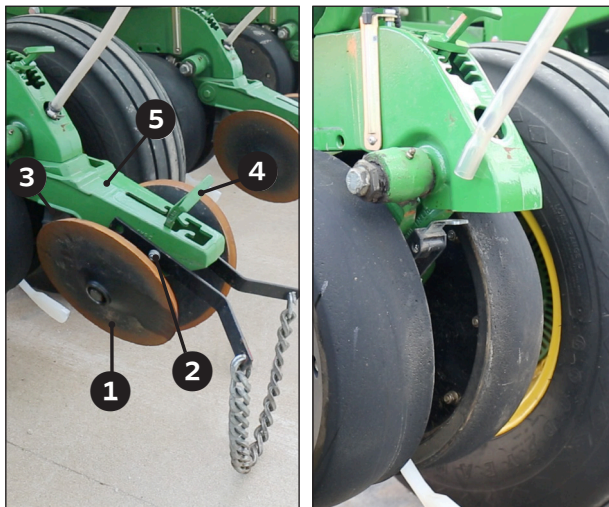


# INSTALLATION INSTRUCTIONS



## STEP 1 | REMOVE CLOSING SYSTEM

Remove closing wheels ❶.

**NOTE: Keep the spacer and washer from between the wheel and closing arm. Discard the other hardware.**

If present, remove previous chain ❷ and/or insecticide attachment ❸.

Release spring ❹ and remove the closing system casting ❺. Discard the bolts.



## STEP 2 | INSTALL BANDIT UNIT

Use short M12 Bolts ❹ to install Bandit unit (long leg to the rear) using the same holes ❺.

## STEP 3 | HOSE GUIDE

Insert hose ❽ into hose guide ❾ leaving 1/8" of hose protruding from end of hose guide.

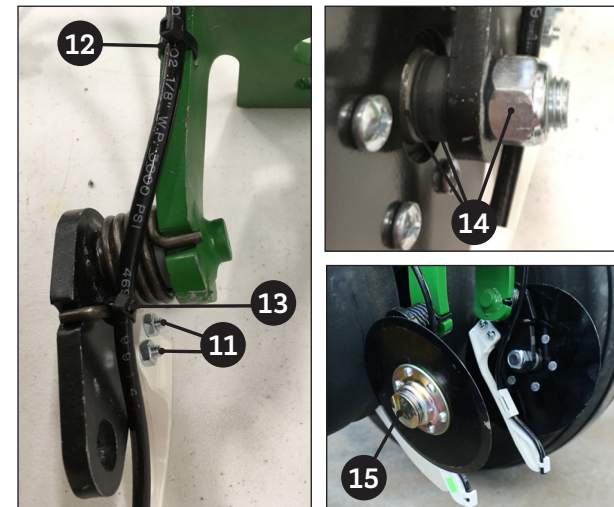
Clip hose into hose retainer ❿.

## BEFORE NEXT STEP...

Hose guides are also labeled to indicate left hand vs right hand.

**Left hose guides** are indicated with a **green sticker**.

**Right hose guides** are indicated with an **orange sticker**.



## STEP 4 | SECURE HOSE GUIDES

Use provided 1" long 1/4-20 bolts and nuts ❾ to fasten hose guide to black pivot arm.

**NOTE: Orient 1/4-20 nuts to the inside of the bandit unit.**

Use provided zip ties to secure hose to green frame on the back ❿ and spring leg ⓫.

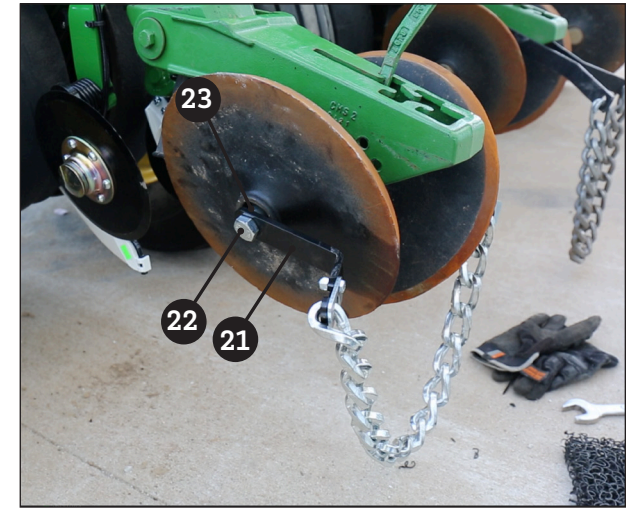
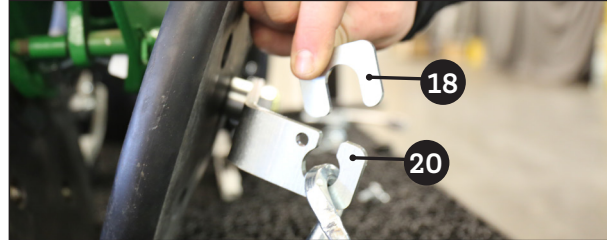
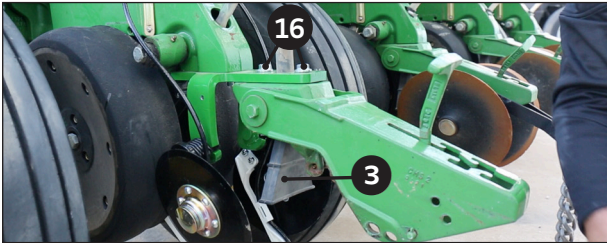
**Repeat for both hose guides.**

## STEP 5 | DISK INSTALLATION

Use provided M16 Bolt, Spacer, and Nut ⓭ to install each disk.

Install provided dust cap ⓮ over head of bolt.

# INSTALLATION INSTRUCTIONS



## STEP 6 | REINSTALL CLOSING SYSTEM

Use long M12 Bolts, washers, and nuts (16) to reattach closing system casting to the Bandit unit.

**NOTE: Hardware should be mounted with the nut and washer underneath.**

Reinstall insecticide attachment (3) if present.

## STEP 7 | ASSEMBLE PLUMBING

Assemble plumbing components in the arrangement shown above (17), and install included orifice plates in the grommets.

The supplied push to connect adapter in the BANDIT Kit connects to 3/8" push to connect compatible hose.

**NOTE: See additional plumbing recommendations in next column.**

## RECOMMENDATIONS

To prevent excess fertilizer from dribbling out the hoses when product application is shut off, install one Push to Connect Polypropylene (Inlet x Outlet) 3/8" O.D. check valve (not included) in the plumbing to each row prior to the 360 BANDIT orifices.

To help prevent debris from blocking orifices, use a 50 mesh strainer (not included) in the complete plumbing system between tanks and 360 BANDIT.

## STEP 8 | CHAIN INSTALLATION

Assemble chain, chain mount brackets, and chain retaining clip (18) using held in place using 3/4" long 1/4"-20 bolt and flanged nut (19).

**NOTE: When attaching chain mount bracket to closing wheels, ensure slot opening on faces up (20).**

## STEP 9 | REINSTALL CLOSING WHEELS

Install chain mount brackets (21) using provided M16 bolts (22), spacers, and nuts positioning the chain bracket spacer (23) between the chain mount bracket and the closing wheel.

Original John Deere spacer and washer should be reinstalled the same as they were removed, between the closing wheel and the closing casting.

Reinstall closing wheels using provided lock nuts.

**NOTE: Chain mount brackets should be oriented parallel with the top of the cast closing arm.**

## INSTALLATION COMPLETE