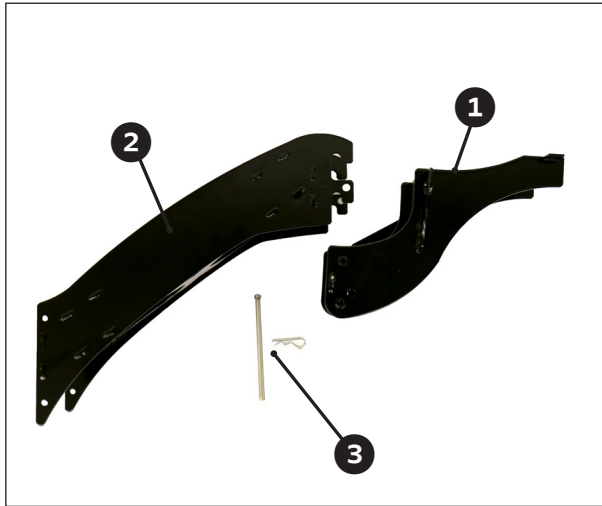


INSTALLATION INSTRUCTIONS

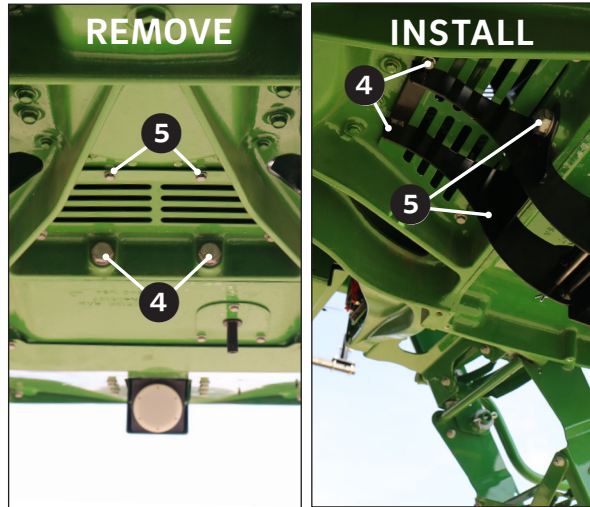
ALL JOHN DEERE SYSTEMS



STEP 1 | ASSEMBLE MATING BRACKET & DROP EXTENSION

Assemble the mating bracket **1** and the drop extension **2** and secure using the supplied 3/8" clevis pin and hairpin clip **3**.

NOTE: With tight tolerances and powder coating between the mating bracket and the drop extension, a rubber mallet may be needed to tap the pieces together.



STEP 2 | INSTALL MATING BRACKET

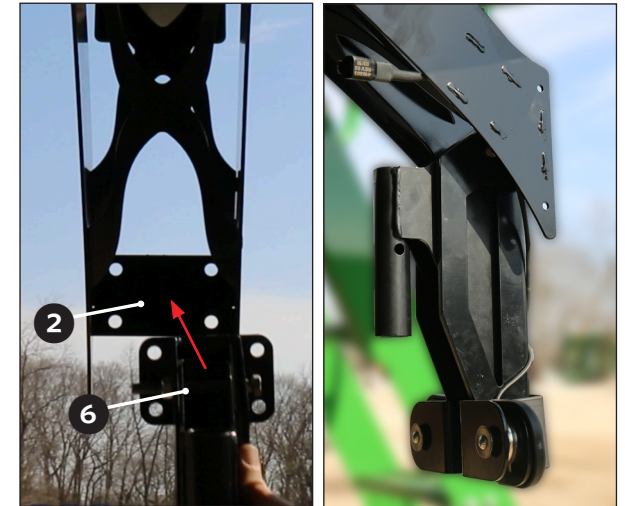
From the underside of the nose of the sprayer, use a 30mm socket to remove the two front bolts **4** and a 13mm socket to remove the two rear bolts **5**.

NOTE: All four bolts will be reused - do not discard.

Place front bolts **4** through the holes in the mating bracket and hand thread in place on the sprayer.

Hand thread the rear bolts **5** through the mating bracket and into the machine.

Tighten the rear bolts first followed by the front bolts.



STEP 3 | MOUNT STEERING BREAKAWAY

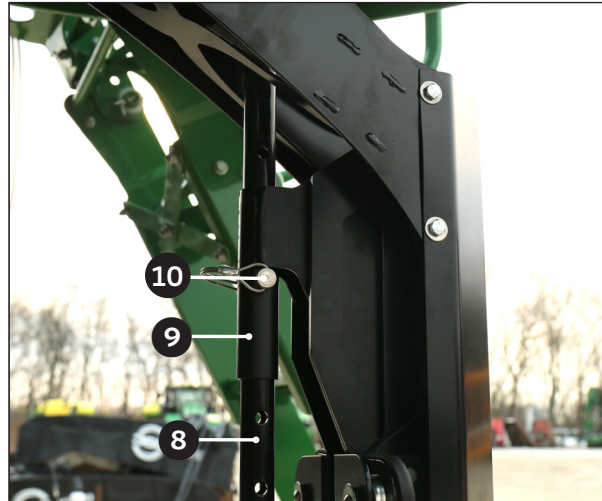
Mount steering breakaway **6** to the backside of the drop extension **2** using the 5/16" hardware supplied in hardware kit 490294.

NOTE: Orient the breakaway in such a way that the riser breaks away in a rearward motion rather than a forward motion.



STEP 4 | MOUNT SHIELD

Using the supplied 1/4" hardware provided in hardware kit 490294, mount the front shield **7** to the drop extension **2** at the hole above and below the breakaway on each side of the shield.

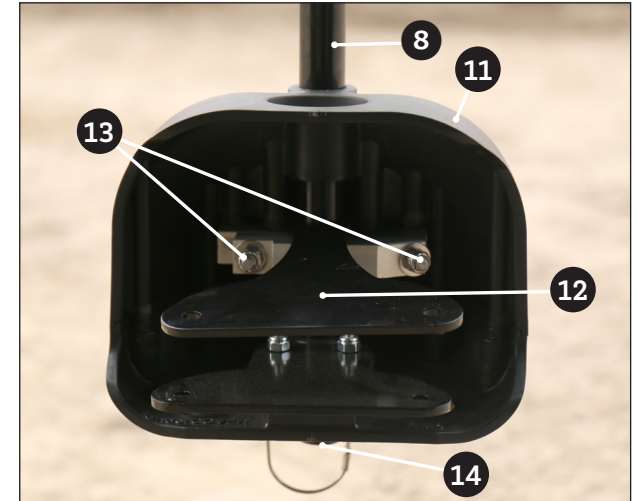


STEP 5 | INSTALL RISER

Starting from the bottom, insert the 44" riser **8** into the breakaway sleeve **9**.

NOTE: In order to provide additional clearance when inserting the riser, it may be helpful to release the breakaway. Use caution when manually pulling apart the breakaway as the magnets are extremely strong.

Secure at the desired height using the supplied 3/8" pin with wire lock **10**.



STEP 6 | INSTALL SENSOR GUARD

NOTE: A 360 UNDERCOVER snout is used as the sensor guard.

Begin to slide the UNDERCOVER snout **11** onto the 44" riser **8** starting from the bottom.

Before the riser goes into the aluminum clamp in the undercover snout, slide the upper sensor bracket **12** on the riser.

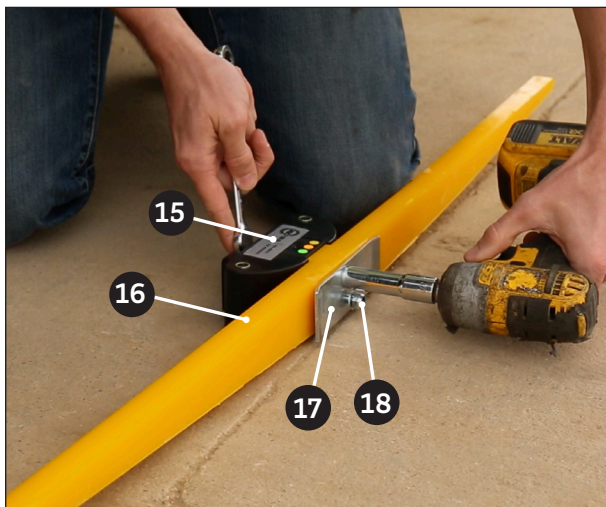
Continue to slide the UNDERCOVER snout and the upper sensor bracket up the riser until you get at least one inch of the riser protruding from beneath the UNDERCOVER snout.

Ensure the UNDERCOVER snout is pointing straight forward and tighten the aluminum clamp bolts **13** using a 1/2" socket.

Insert and secure clip **14** into riser under the UNDERCOVER snout.

INSTALLATION INSTRUCTIONS

ALL JOHN DEERE SYSTEMS



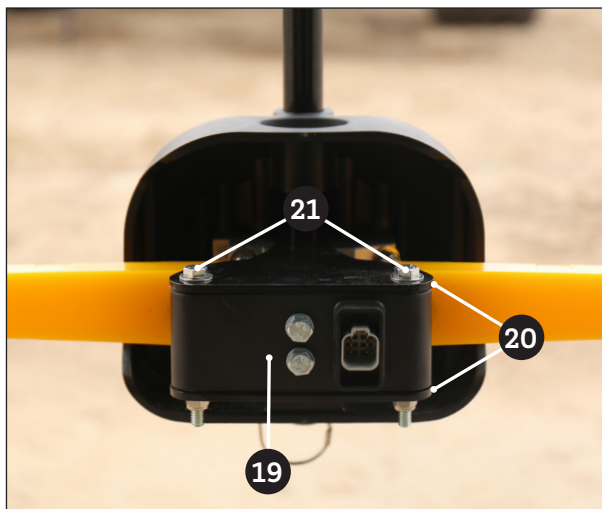
STEP 7 | ASSEMBLE TACTILE WAND AND STEERING SENSOR

Using a 13 mm socket, remove the hardware and plate supplied on the steering sensor **15**.

Slide the tactile wand **16** onto the spindles of the steering sensor ensuring that the "V" of the tactile wand is oriented to the bottom of the sensor. The rectangular offset of the tactile wand should be facing the steering sensor.

NOTE: The top of the steering sensor is the side with product labels.

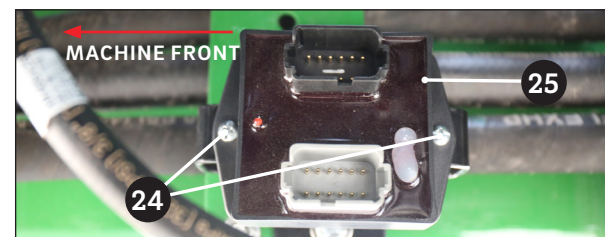
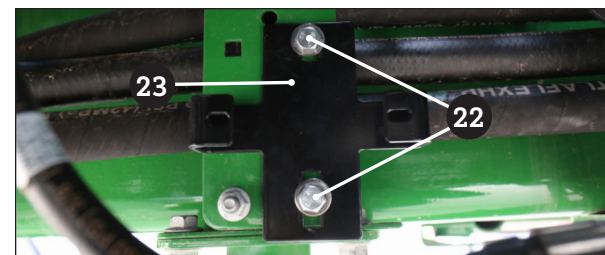
Reinstall the plate **17** and hardware **18** to secure the tactile wand to the steering sensor.



STEP 8 | INSTALLING WAND/ SENSOR ASSEMBLY

Place the wand/sensor assembly **19** in between the upper and lower sensor brackets **20** attached to the sensor guard assembly (UNDERCOVER snout) so that the top of the sensor is facing up and the wand is facing the front of the sensor guard assembly.

Using the supplied 5/16" hardware **21**, bolt the upper and lower sensor brackets together, sliding the bolts through the holes in the rear of the sensor assembly.

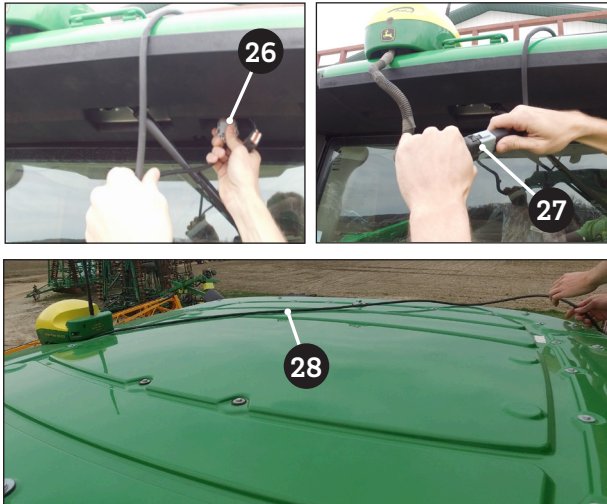


STEP 9 | INSTALL COMBO BOARD BRACKET

Using the supplied 5/16" X 1" hardware **22**, mount the combo board bracket **23** to the existing hydraulic hose bracket towards the rear of the cab under the belly of the machine.

STEP 10 | INSTALL COMBO BOARD

Using the supplied #10 hardware **24** along with a 10mm wrench and phillips screw driver, secure the combo board **25** to the combo board bracket ensuring the red LED indicator is oriented to the front of the machine.



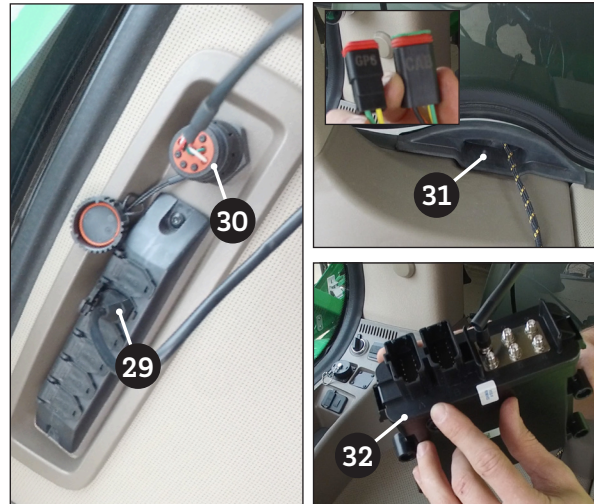
STEP 11 | INSTALL GPS HARNESS (490230)

Plug in the male 12 pin connector into the GPS port embedded into the front of the cab, just below the GPS globe and bracket **26**.

Plug in female 12 pin connector in the male 12 pin connector on the short OEM StarFire harness off the globe itself **27**.

Run the harness over the roof of the cab to the rear **28**, and then down along the right rear pillar of the cab.

The female 2 pin connector will attach to the male 2 pin connector on the JD steering tractor power harness (490228) in a later step.



STEP 12 | JD Steering Tractor Power (490228)

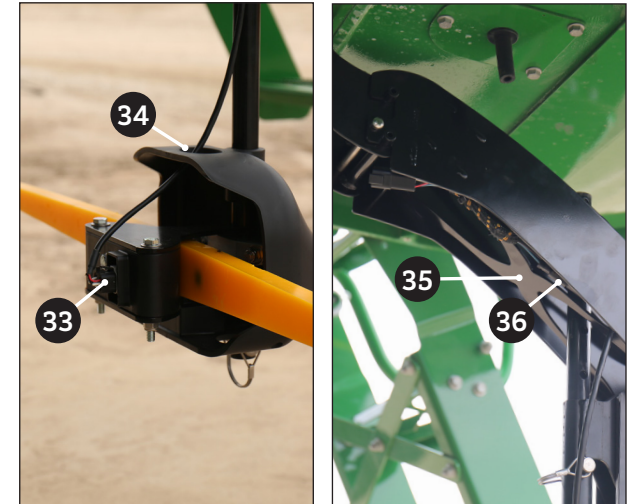
In the cab of the sprayer, attach the 3 pos Aux Power connector into the cab auxiliary power bank **29**.

Attach the large 9 pin circular connector to the OEM diagnostic port **30**.

Using the rubber through-port below the rear window **31**, run 4 pin and 2 pin connectors (labeled GPS and CAB) outside the cab.

The Gateway 300 **32** connects into the two 12 pin connectors remaining with harness and can be placed in any position next to the seat.

NOTE: The Gateway has labels for "A" and "B" ports. The "A" port will use the gray 12 pin connector and the "B" port will use the black.



STEP 13 | INSTALL DETACH EXTENSION HARNESS (490291)

Feed the 6 pin socket end of the harness **33** through the hole **34** in the top of the sensor guard assembly (UNDERCOVER snout) and plug it in to the rear of the tactile sensor.

Using zip ties, tightly attach the harness to the riser, moving up toward the breakaway.

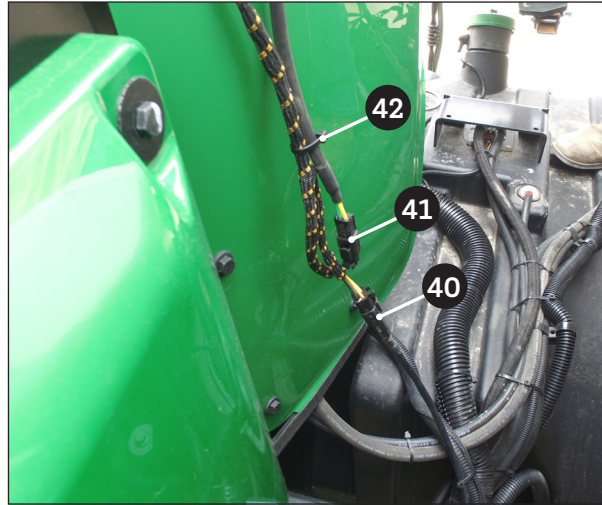
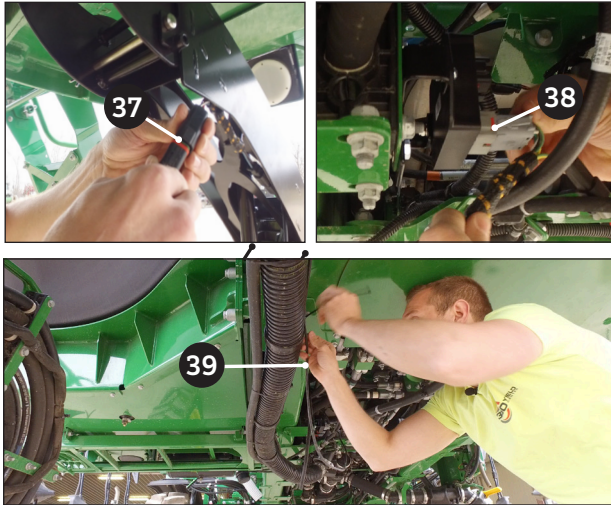
NOTE: Be sure to leave enough slack in the harness to allow you to adjust the riser height if needed.

Route the harness through the inside of the front shield and through the X braces **35** in the drop extension. Attach in at least one place with a zip tie.

Plug 2 pin connector to existing breakaway harness **36** and coil any remaining cable within the X braces of the drop extension.

INSTALLATION INSTRUCTIONS

ALL JOHN DEERE SYSTEMS



STEP 14 | INSTALL EXTENSION HARNESS (490229)

Start at the front of the machine and plug in the male 6 pin connector to the female 6 pin connector from the detach extension harness (37).

Route the 150" extension harness towards the combo board against the belly of the machine.

Plug in the 12 pin connector to the available "A" port (gray) on the combo board (38).

Run the 4' short lead with the female 4 pin connector up between the cab and the tank.

Secure the 150" extension harness against the belly of the machine with zip ties at multiple spots along the way (39).

STEP 9 | PLUG HARNESSES TOGETHER

Behind the cab, attach the four pin connection (40) and then the two pin connection (41).

Once connected, zip tie them together (42).

INSTALLATION COMPLETE

Once the 360 GLIDE system has been installed you can connect to it via wifi on your iPad using the 360 Steering App.