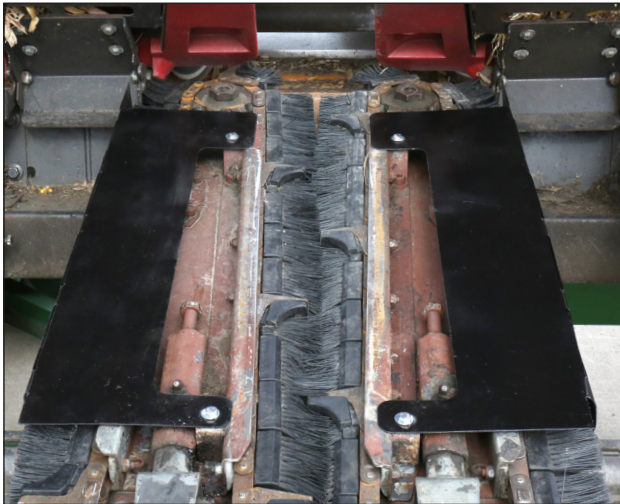


SHIELD INSTALLATION

DRAGO SERIES 1 AND 2

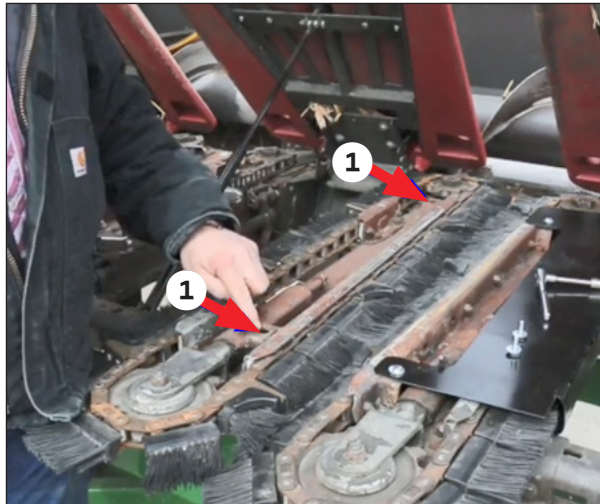


HELPFUL TOOLS

- Air Compressor
- Hammer
- 7/16" Socket and Ratchet

NEED HELP?

Call our Product Support team at 888-512-4890.

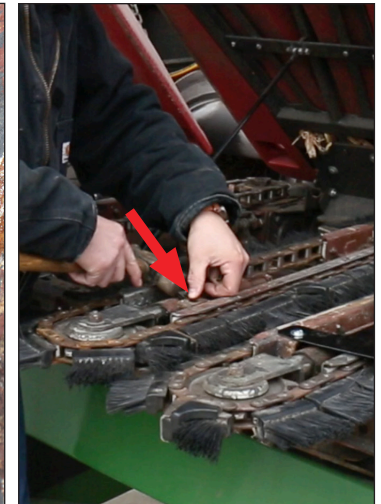
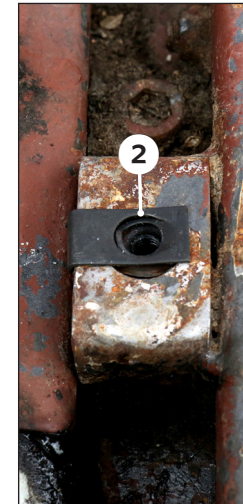


WHY SHIELDS?

When running 360 Yield Saver on some Drago Series 1 & Series 2 corn heads, leaves and "fluff" coming across the front of the auger trough can be grabbed by the 360 YIELD SAVER brushes. That can result in residue accumulating on the long strut and front bracing under the snout. While this residue buildup does not cause damage, shields can be installed to eject the residue -- grabbed by the brushes -- out the front of the row unit. These instructions will help guide you through the shield installation process.

BEFORE YOU BEGIN...

Ensure nut clip mount holes ① on each side of all row units are clear of debris using air compressor.

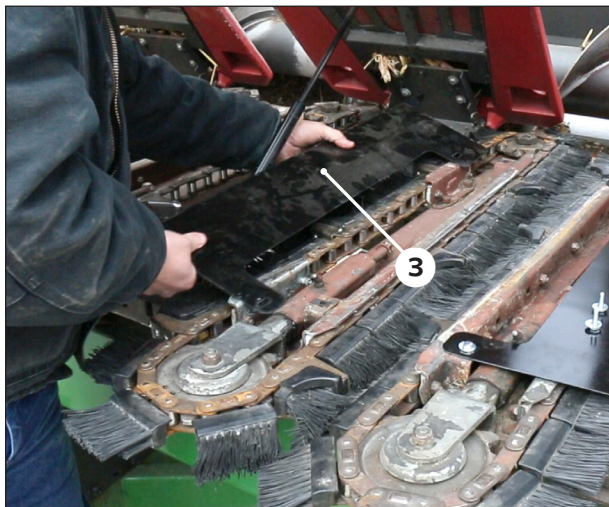


STEP 1 | INSTALL NUT CLIPS

Install nut clips ② in the mounting holes on the row unit by tapping them in place with a hammer.

SHIELD INSTALLATION

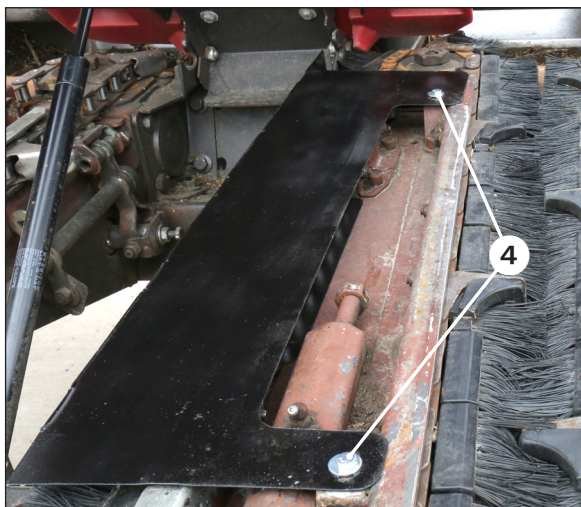
DRAGO SERIES 1 AND 2



STEP 2 | INSTALL SHIELD

Tip the shield ③ and slide it into place over the 360 YIELD SAVER brushes until it lines up with the nut clips.

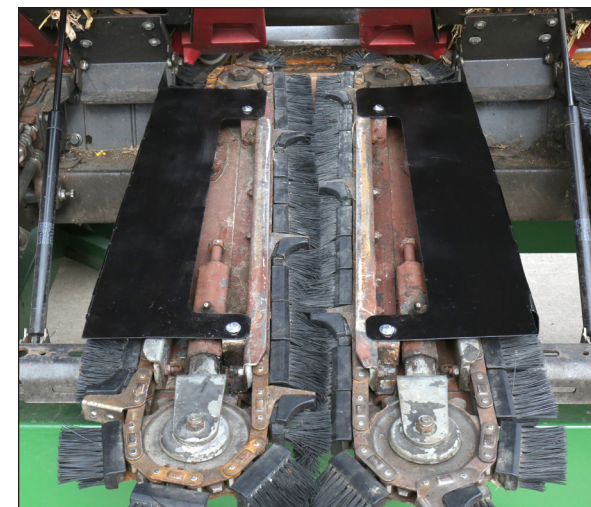
NOTE: Be sure to get all the brush bristles tucked inside the shield on the top and bottom.



STEP 3 | SECURE WITH BOLTS

Install bolts ④ and tighten using 7/16" socket and ratchet.

Repeat steps 1-3 for both sides of all row units.



INSTALLATION COMPLETE

When the snouts are closed, the shields will be held down tight.