

SHIELD INSTALLATION

CASE IH 4000 SERIES



HELPFUL TOOLS

- 17" mm Socket and Impact
- Crowbar
- Tensioner Tool that comes with Case IH head

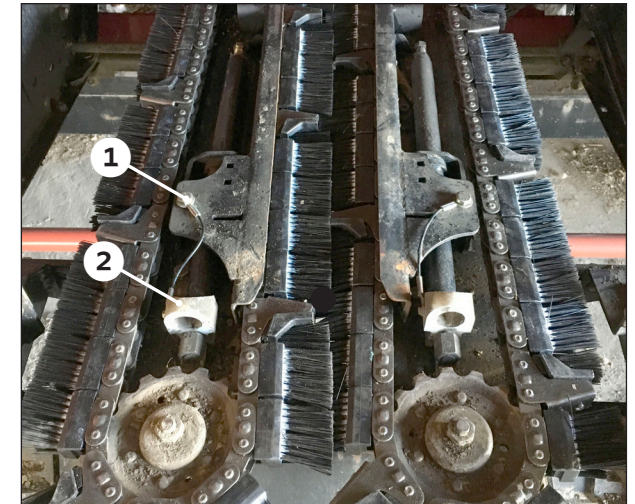
NEED HELP?

Call our Product Support team at 888-512-4890.



WHY SHIELDS?

When running 360 Yield Saver on some Case corn heads, leaves and "fluff" coming across the front of the auger trough can be grabbed by the 360 YIELD SAVER brushes. That can result in residue accumulating on the long strut and front bracing under the snout. While this residue buildup does not cause damage, shields can be installed to eject the residue -- grabbed by the brushes -- out the front of the row unit. These instructions will help guide you through the shield installation process.



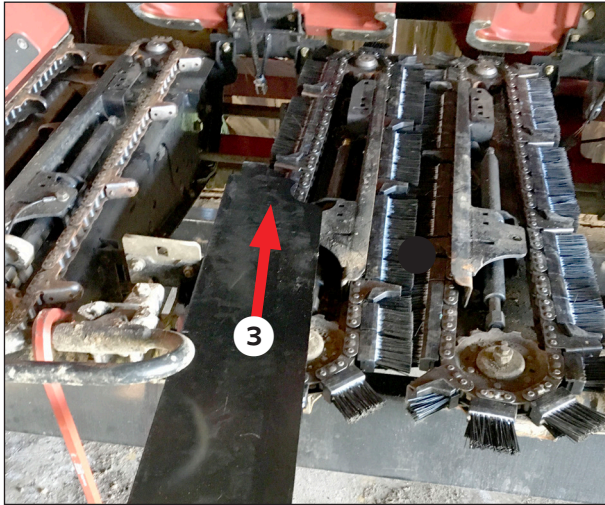
STEP 1 | REMOVE SPACER

Remove the bolt **1** securing the cable for the nylon spacer.

Remove the nylon spacer **2**.

TUNNELING INSTALLATION

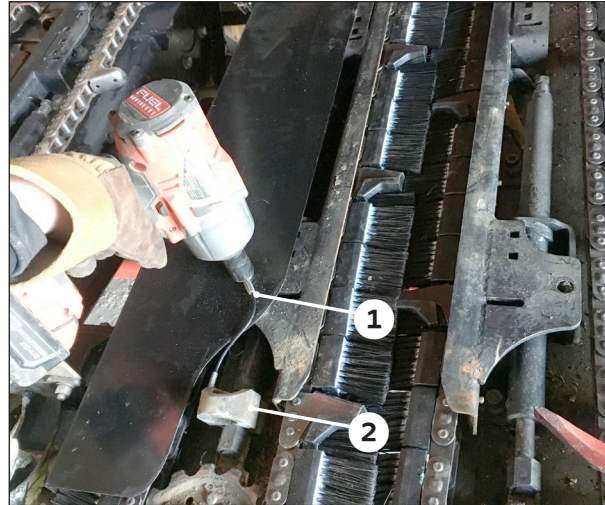
CASE IH 4000 SERIES



STEP 2 | INSTALL SHIELD

From the front, slide shield ③ into place over the 360 YIELD SAVER brushes.

NOTE: Be sure to get all the brush bristles tucked inside the shield on the top and bottom.



STEP 3 | SECURE

Re-install bolt ① and nylon spacer ②.

Repeat steps 1-3 for both sides of all row units.



INSTALLATION COMPLETE

When the snouts are closed, the shields will be held down tight.