

INSTALLATION INSTRUCTIONS

CASE IH - 4000 SERIES

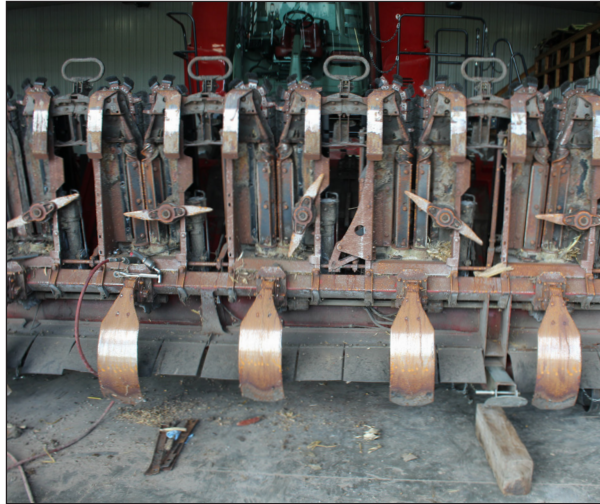


HELPFUL TOOLS

- 10mm Hex bit (allen socket)
- Torque Wrench
- Socket Set
- Hammer

NEED HELP?

Call our Product Support team at 888-512-4890.



OEM ROLL DISASSEMBLY

We have found the best way to install 360 CHAINROLL is by removing the residue knives and replacing the OEM roll knives with 360 CHAINROLL from the bottom side of the head.

NOTE: If you have the ability to stand the head on the back side with the snout up, you won't have to lay under the head for the install.

When disassembling the OEM rolls, it is possible to remove both the chains and deck plates and continue the installation process from the top. You could also remove the rolls themselves.

NOTE: If removing the rolls, be sure to correctly time them when re-installing.



BEFORE YOU ASSEMBLE...

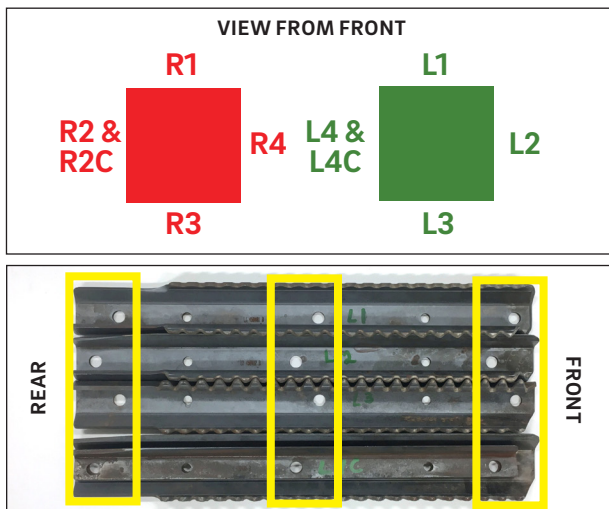
NOTE: Remember, left and right are determined from the drivers seat.

It is not recommended to open all the kits at the same time. Instead, we recommend opening and assembling **only one row at a time**. Layout one bundled left kit and one bundled right kit under each row.

For assembly on threaded shafts, use the hardware from **hardware kit 450420**.

INSTALLATION INSTRUCTIONS

CASE IH - 4000 SERIES



STEP 1 | MATCH KNIVES

Open one left kit and one right kit.

Identify matching CHAINROLL knives. The following are matching sets:

L1 and **R1**

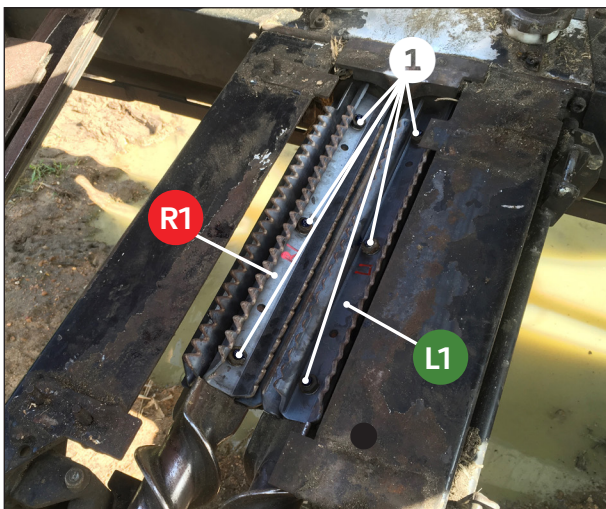
L2, **R2**, and **R2C** - **R2C** will be installed on top of **R2**

L3 and **R3**

L4, **L4C** and **R4** - **L4C** will be installed on top of **L4**

NOTE: It is important to ensure that knives are installed in the order of the following steps to ensure that timing of the rolls remains correct when installation is complete.

NOTE: On the rolls, L1 and L3 bolt holes are offset from L2 and L4 sides. When fully installed the ends of all knives should be flush.



STEP 2 | INSTALL L1 AND R1

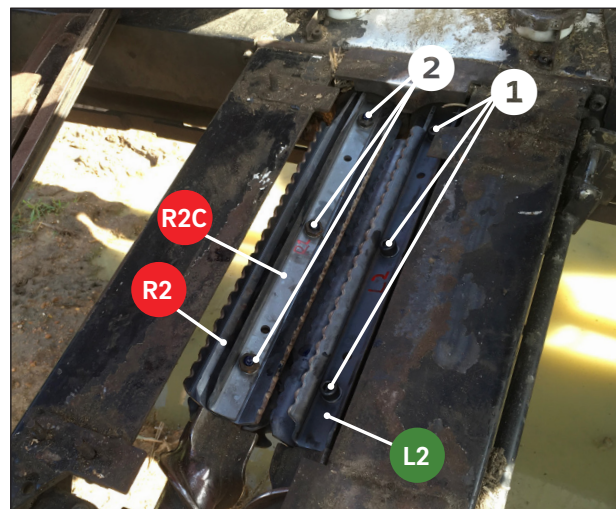
Remove weed knives.

Remove all OEM knives on the left roll and the right roll.

Using three of the shorter M12 bolts and lock washers from **hardware kit 450420 ①**, place one shim against the **left roll** and install the **L1** knife on top of the shim.

Using three of the shorter M12 bolts and lock washers from **hardware kit 450420 ①**, place one shim against the **right roll** and install the **R1** knife on top of the shim.

Torque all three bolts on both the left and the right rolls to 100ft/lbs.



STEP 3 | INSTALL L2, R2, and R2C

Spin the head as it would in normal running conditions to access the next two knife locations.

Using three of the shorter M12 bolts and lock washers from **hardware kit 450420 ①**, place one shim against the **left roll** and install the **L2** knife on top of the shim.

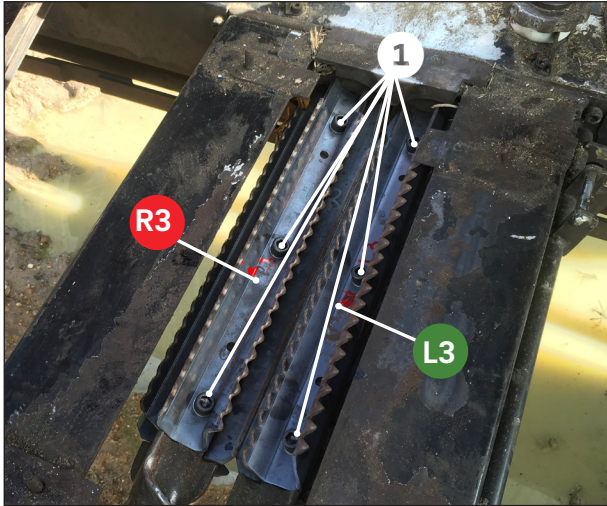
Using three of the longer M12 bolts and lock washers from **hardware kit 450420 ②**, place one shim against the **right roll** and install the **R2** and **R2C** knives on top of the shim.

NOTE: The **R2** knife should be installed against the shim and the **R2C** knife should be installed on top of the **R2** knife with the bolt extending through the shim and both knives.

Torque all three bolts on both the left and the right rolls to 100ft/lbs.

INSTALLATION INSTRUCTIONS

CASE IH - 4000 SERIES



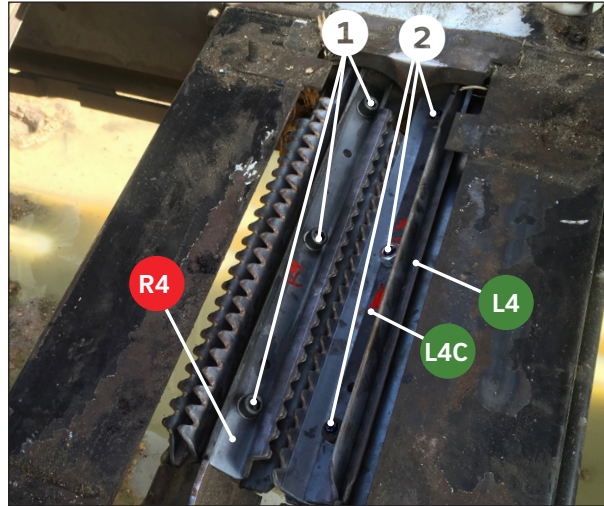
STEP 4 | INSTALL L3 AND R3

Spin the head as it would in normal running conditions to access the next two knife locations.

Using three of the shorter M12 bolts and lock washers from **hardware kit 450420 ①**, place one shim against the **left roll** and install the **L3** knife on top of the shim.

Using three of the shorter M12 bolts and lock washers from **hardware kit 450420 ①**, place one shim against the **right roll** and install the **R3** knife on top of the shim.

Torque all three bolts on both the left and the right rolls to 100ft/lbs.



STEP 5 | INSTALL L4, L4C, and R4

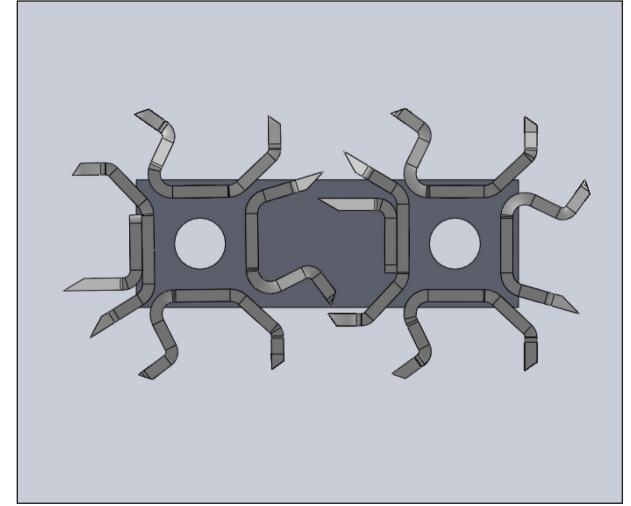
Spin the head as it would in normal running conditions to access the next two knife locations.

Using three of the longer M12 bolts and lock washers from **hardware kit 450420 ②**, place one shim against the **left roll** and install the **L4** and **L4C** knives on top of the shim.

NOTE: The L4 knife should be installed against the shim and the L4C knife should be installed on top of the L4 knife with the bolt extending through the shim and both knives.

Using three of the shorter M12 bolts and lock washers from **hardware kit 450420 ①**, place one shim against the **right roll** and install the **R4** knife on top of the shim.

Torque all three bolts on both the left and the right rolls to 100ft/lbs.



STEP 6 | REPEAT

Rotate the rolls at least one revolution to ensure there is no interference between the knives.

If the knives are hitting the deck plates, use the OEM alignment tool provided to set the stalk roll bearing alignment. See pages 4-5 for instructions on using the OEM alignment tool.

Repeat steps 1-5 for the remaining rows.

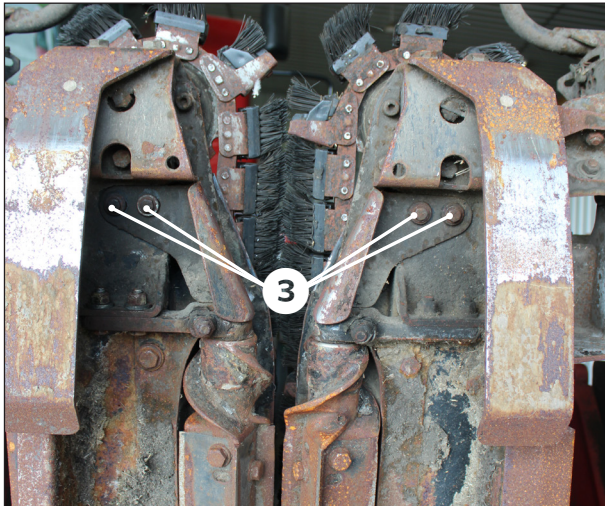
INSTALLATION COMPLETE

NOTE: Ensure cutting flutes are properly timed. As long as matching knives (L1 and R1, L2 and R2, etc) are adjacent to each other and the single cutting flute goes in between dual cutting flutes on the opposite roll, the rolls should be timed correctly.

Refer to normal OEM procedure for further adjustments.

OEM ALIGNMENT TOOL

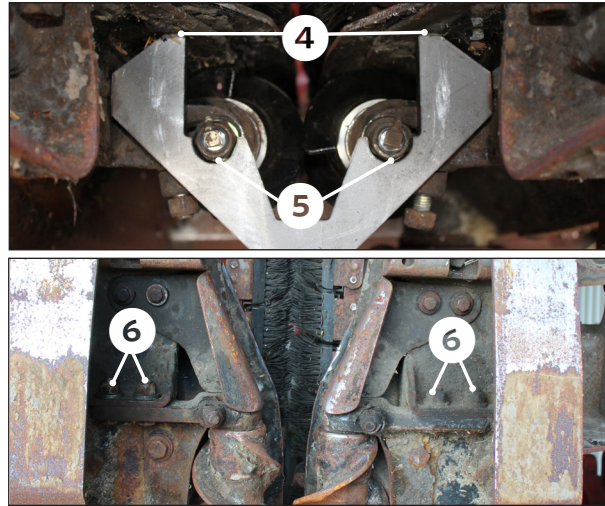
CASE IH - 4000 SERIES



STEP 1 | REMOVE COVERS

Remove the bolts ③ holding the covers on the stalk roll bearings.

Remove the covers on the stalk roll bearings.



STEP 2 | VERIFY POSITIONING

Slide the alignment tool over the front of the stalk rolls. It should contact the bottom of the row unit ④.

With the alignment tool positioned against the bottom of the row unit, check the position of the stalk roll nuts. They should be seated in the notch on the alignment tool ⑤.

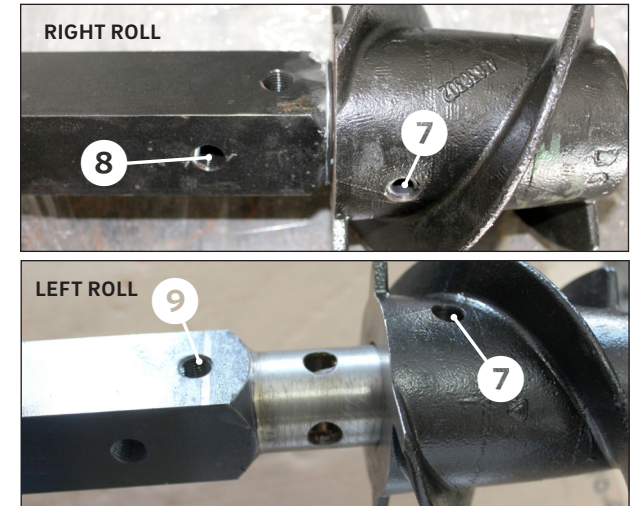
If the nuts are not sitting in the notch, loosen the two bearing mount bolts ⑥ slightly, until you can tap the roll and move it to correct position in the alignment tool notch.

Once positioned correctly, tighten the bearing mount bolts.

Rotate the rolls at least one revolution to ensure there is no interference between the knives.

Reinstall stalk roll bearing covers.

ALIGNMENT COMPLETE



NOTE: If you are installing 360 CHAINROLL on a new stalk roll, follow the OEM instructions and ensure that the spiral cones are oriented at 90°. The best fit occurs when the spiral roll pin hole ⑦ aligns with the furthest knife bolt hole ⑧ on the right roll and the closer knife bolt hole ⑨ on the left side spiral.