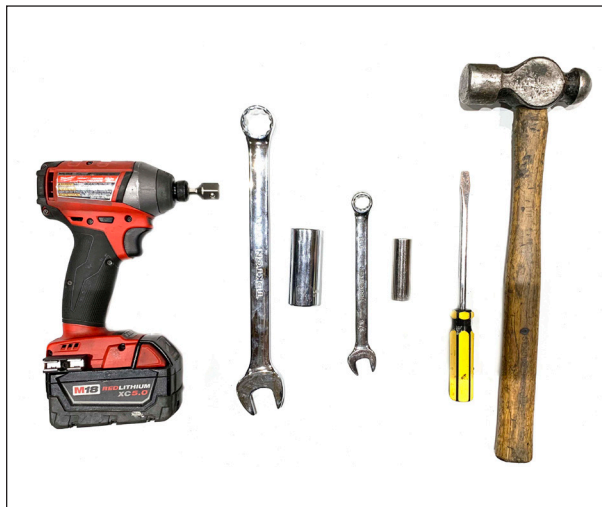


PIVOT ARM REPLACEMENT



HELPFUL TOOLS

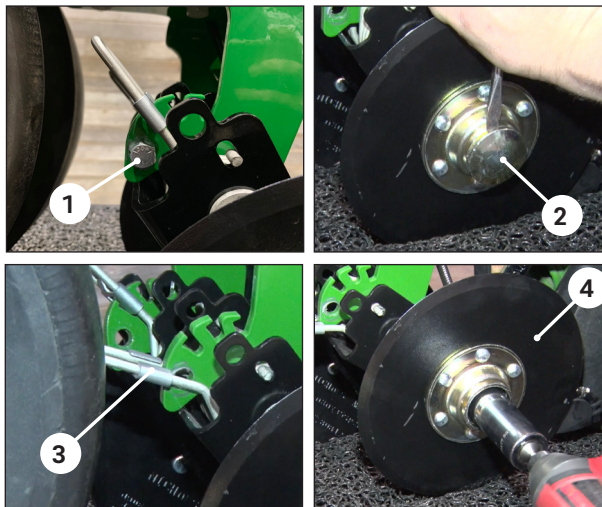
- 9/16", 15/16" wrench
- 9/16", 15/16" socket
- Impact
- Punch
- Hammer
- Flat Head Screwdriver

NEED HELP?

Call our Product Support Team at 309-300-3120.

VIDEO INSTRUCTIONS

For a video walk-through of the installation process visit <https://youtu.be/FUUvIKo44zM>.



STEP 1 | REMOVE DISKS

Remove spring retention stop bolt ① using a 9/16" wrench and socket.

Repeat on other arm.

Remove dust cap ② with punch and hammer.

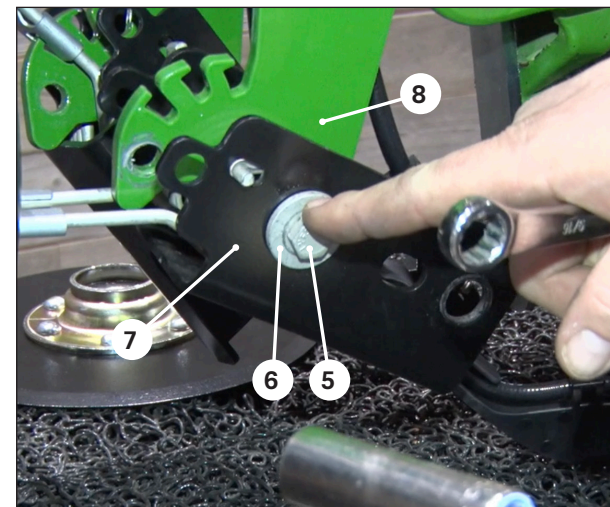
Repeat on other disk.

Disengage spring tension clip ③ so that the arm floats freely.

Remove the disk blade ④ by removing the bolt with a 15/16" wrench and socket.

NOTE: After you remove the disk you will see that the hardware removed includes a bolt, bushing and a nut. The bushing goes into the hose guide to keep it connected to the pivot arm. This hardware should be retained and will later be reinstalled in the same order it was removed.

Repeat disk blade removal on other side.



STEP 2 | REMOVE PIVOT ARM ASSEMBLIES

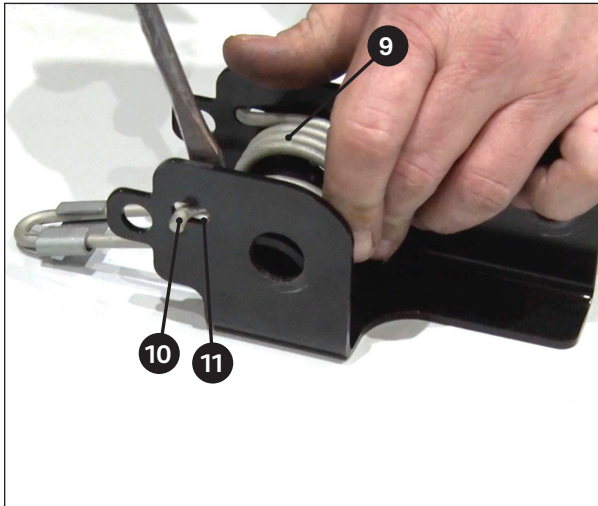
NOTE: The hose guides do not need to be removed. They can remain plumbed to the row unit.

Remove the 3/8" bolt ⑤ and bushings ⑥ from the pivot arm ⑦ using a 9/16" wrench and socket. Slide the pivot arm assembly off the saddle bracket ⑧.

NOTE: The pivot arm assembly consists of two steel bushings, a spring, and two plastic bushings. This hardware should be retained and will later be reinstalled on the new pivot arm in the same order it was removed.

Repeat the pivot arm assembly removal on the other side.

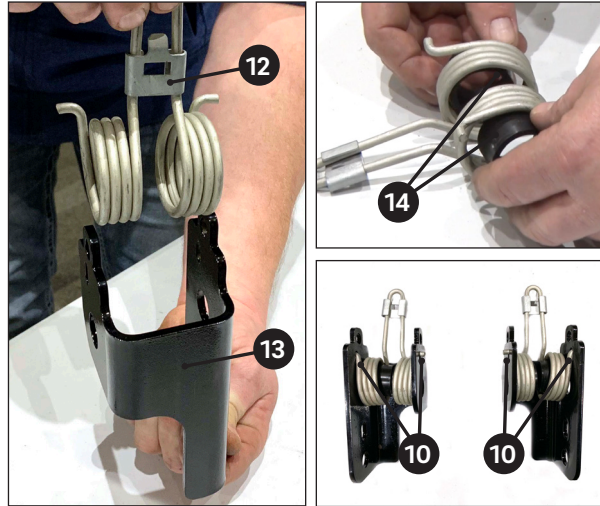
PIVOT ARM REPLACEMENT



STEP 3 | DISASSEMBLE ORIGINAL PIVOT ARM ASSEMBLIES

Remove the spring 9 from the original pivot arm using a flat head screw driver to pry the spring hook 10 out of the slotted hole 11 on the pivot arm.

Repeat the spring removal on the second pivot arm.



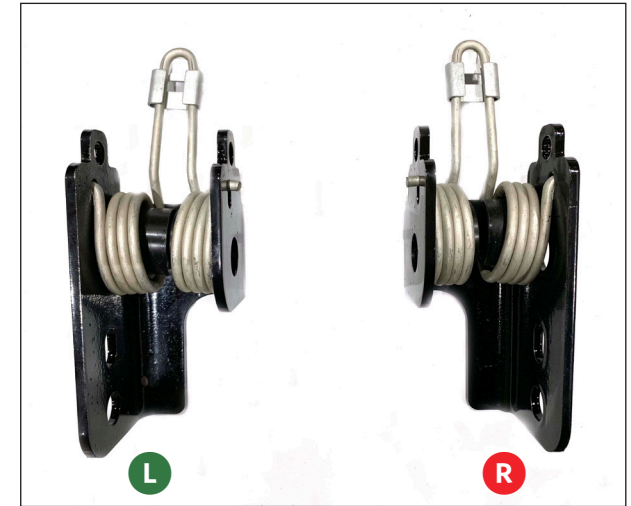
STEP 4 | ASSEMBLE REPLACEMENT PIVOT ARM ASSEMBLIES

NOTE: Before the spring is installed on the new pivot arm, ensure that it is oriented with the flat side of the spring clip 12 facing the flat side of the pivot arm 13.

Insert the two black plastic bushings 14 back into the spring.

With the spring properly oriented, work the spring back down into the pivot arm. Snap both the spring hooks 10 back into the slotted holes on the pivot arm.

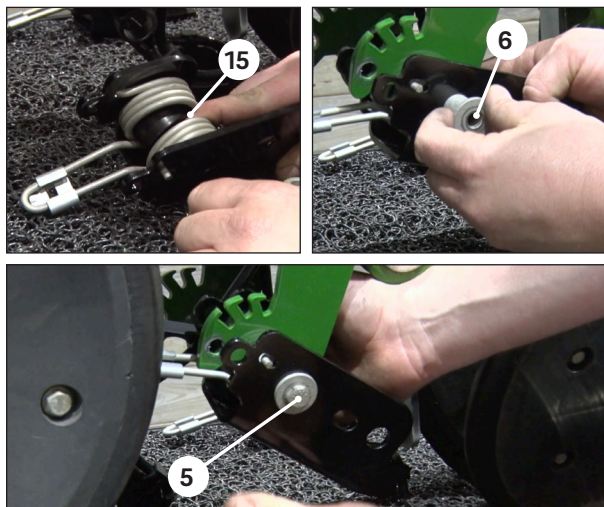
Repeat the spring installation on the second pivot arm.



BEFORE YOU CONTINUE...

Before reinstalling the new pivot arm assemblies onto the row unit, ensure the right and left pivot arm assemblies have been properly identified. The large, flat side of the arm faces the outside of the row. Remember right and left on the row unit are determined by facing the rear of the planter.

PIVOT ARM REPLACEMENT



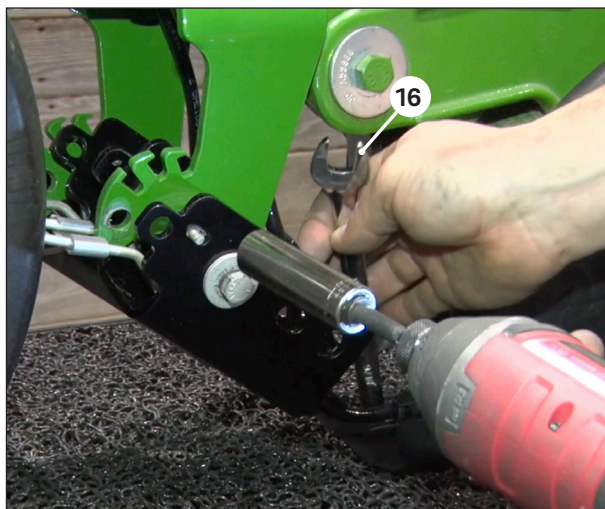
STEP 5 | INSTALL PIVOT ARM ASSEMBLIES

To reinstall the pivot arm assembly, separate the black bushings inside the spring with your index finger **15** and slide the pivot arm assembly up around the saddle bracket of the row unit.

Insert the two steel bushings **6**, one on each side of pivot arm assembly, through the side of the pivot arm and the black bushings, tight against the saddle bracket.

Insert the bolt **5** completely through the steel bushings and the hole on the saddle bracket. Loosely start the nut on the back of the bolt to keep it in place.

NOTE: This bolt must remain loose until the pivot arm assembly has been installed on the second side of the row unit in order for there to be enough room to get both sides installed. When the bolts get tightened down completely.

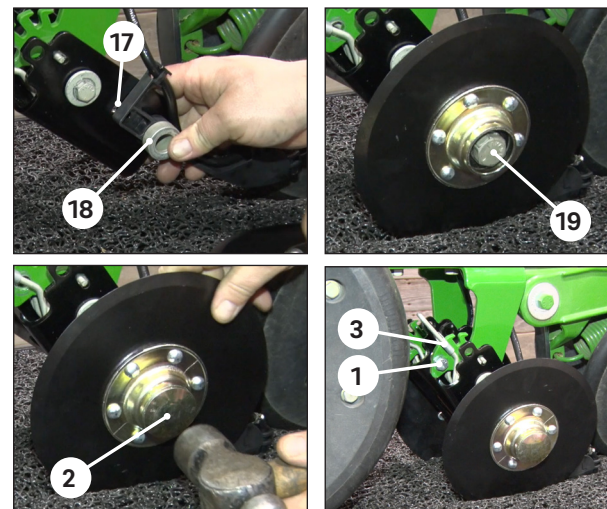


STEP 5 CONTINUED...

Repeat the pivot arm assembly re-installation on other side.

NOTE: The inside steel bushing of the second pivot arm assembling will need to be put in place before sliding the assembly around the saddle bracket.

With both pivot arm assemblies loosely in place, tighten the nuts on both sides using the open end of the 9/16" wrench **16** (otherwise the wrench will get stuck after the bolt is tightened) and socket.



STEP 6 | REINSTALL DISKS

Insert the boss **17** of the hose guide into the slotted hole on the pivot arm assembly. Insert the bushing **18** with the narrow side going into the hose guide. Put the disk blade up into place. Slide the bolt **19** through the disk blade, bushing and hole on the pivot arm assembly. Secure with the nut and tighten with 15/16" wrench and socket.

Reinstall the dust cap **2** using a hammer to tap around the entire perimeter of the cap.

Repeat the disk blade and hose guide re-installation on the opposite side.

Set spring tension **3** on both sides back to preferred setting. Reinstall the 3/8" stop bolt **1** under the spring tension clip and tighten with 9/16" socket and wrench.

PIVOT ARM REPLACEMENT COMPLETE