



# 360 CHAINROLL®

INSTALLATION INSTRUCTIONS  
CASE IH 3000 SERIES



[360YIELDCENTER.COM](http://360YIELDCENTER.COM)

FOR QUESTIONS PLEASE CONTACT OUR  
PRODUCT SUPPORT TEAM AT 309-300-3120

8.13.19 • V7



# INSTALLATION INSTRUCTIONS

CASE IH 3000 SERIES

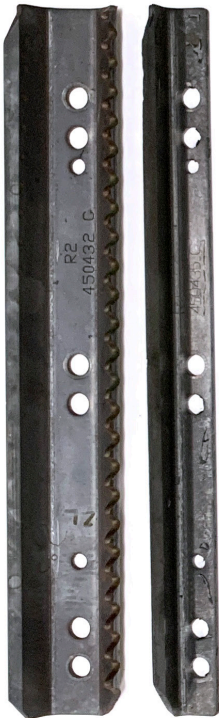


## CROSS AUGER SIDE

R1



R2



R3



R4



## HARDWARE



L1



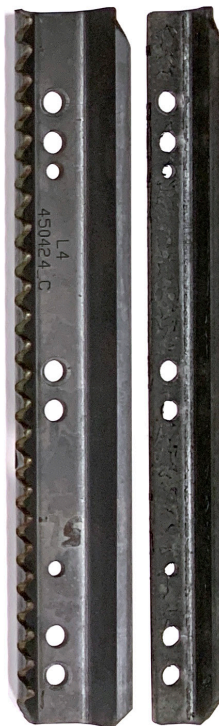
L2



L3



L4



## FRONT OF SNOOT

# INSTALLATION INSTRUCTIONS

CASE IH 3000 SERIES



## BEFORE YOU BEGIN



### HELPFUL TOOLS

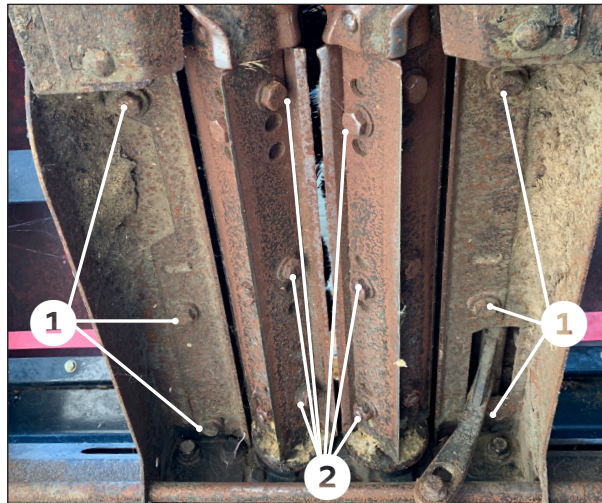
- 10 mm hex shaft driver (allen socket)
- Socket set
- Torque wrench
- Hammer

### NEED HELP?

Call our Product Support team at 309-300-3120.

## STEP 1

### OEM ROLL DISASSEMBLY



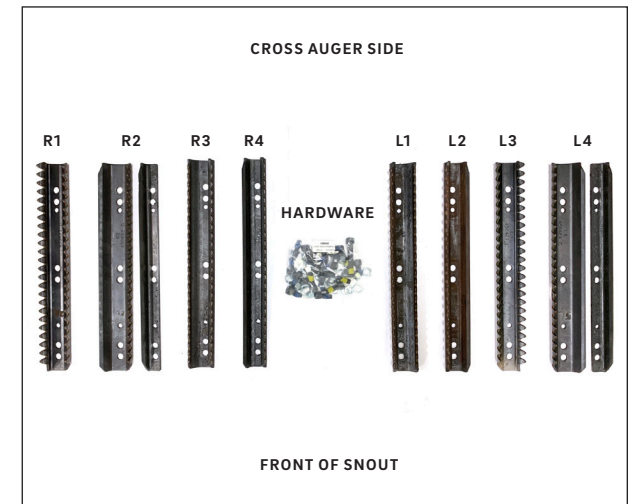
We have found the best way to install 360 CHAINROLL is by removing the residue knives and replacing the OEM roll knives with 360 CHAINROLL from the bottom side of the head.

On each row where 360 CHAINROLL will be installed, remove the three bolts **1** on each OEM residue knife. Retain these bolts for use when installing the 360 Residue Knives later in the installation process.

Remove the three bolts **2** in each OEM plate to uninstall all OEM plates on each row where 360 CHAINROLL will be installed. To gain access to all four sides of each shaft, the rolls may need to be rotated multiple times. This hardware can be discarded.

## BEFORE YOU BEGIN ASSEMBLY

### PLEASE NOTE



We recommend opening **only one row at a time**. Layout one bundled left kit and one bundled right kit under each row, keeping in mind that **left and right are determined from the operator's seat**.

Arrange the knives as shown in the picture above:

**R1 - R2 (consists of two pieces) - R3 - R4**

**L1 - L2 - L3 - L4 (consists of two pieces)**

**The stamped numbers indicated the back of the knife which should be oriented towards the cross auger side of the head.**



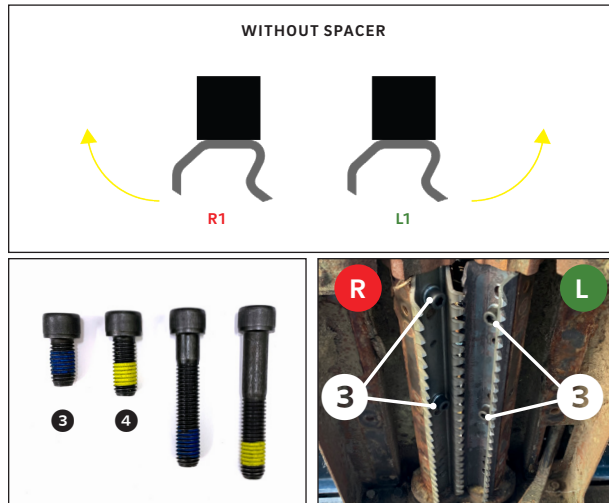
# INSTALLATION INSTRUCTIONS

CASE IH 3000 SERIES



## STEP 3

### INSTALL R1 AND L1



Using two of the shorter M12 bolts (**blue loctite**) and lock washers from **hardware kit 450640 ③**, install the **R1** plate on the **right roll**. Bolts should be inserted at the appropriate locations at the front and middle of the roll.

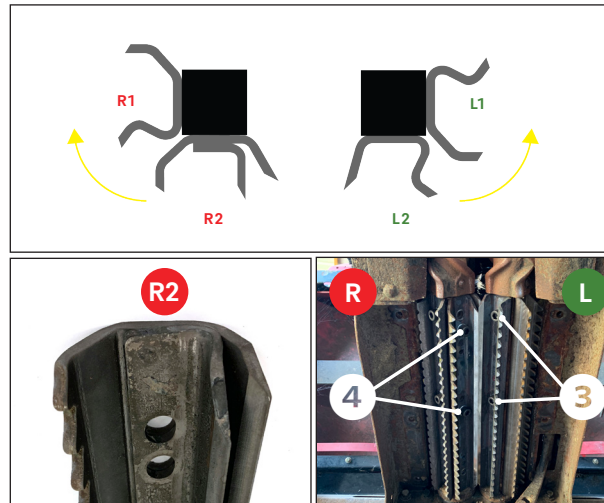
Using two of the shorter M12 bolts (**blue loctite**) and lock washers from **hardware kit 450640 ③**, install the **L1** plate on the **left roll**. Bolts should be inserted at the appropriate locations at the front and middle of the roll.

Torque bolts on both the left and the right rolls to 100ft/lbs.

Rotate the head as it would in normal operation to access the next face of the shaft.

## STEP 4

### INSTALL R2 AND L2



Using two of the shorter M12 bolts with **yellow loctite** and lock washers from **hardware kit 450640 ④**, install the two **R2** plates on the **right roll**. Bolts should be inserted at the appropriate locations at the front and middle of the roll.

**NOTE: The larger R2 plate (450432) should be installed against the shaft with the smaller R2 plate (450435) installed on the larger R2 plate. The bolts will go through both plates.**

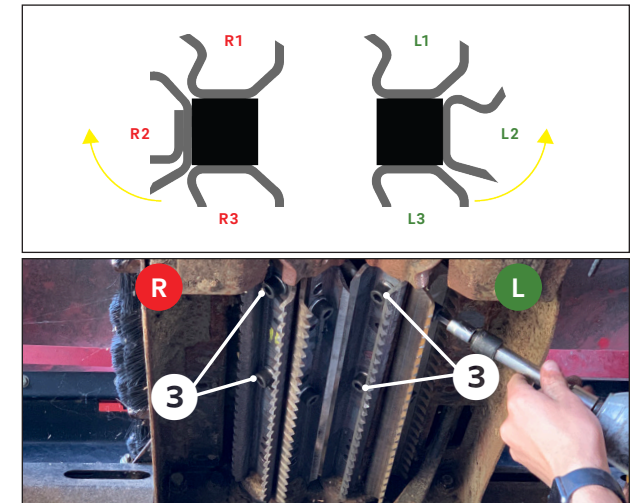
Using two of the shorter M12 bolts with **blue loctite** and lock washers from **hardware kit 450640 ③**, install the **L2** plate on the **left roll**. Bolts should be inserted at the appropriate locations at the front and middle of the roll.

Torque bolts on both the left and the right rolls to 100ft/lbs.

Rotate the head as it would in normal operation to access the next face of the shaft.

## STEP 5

### INSTALL R3 AND L3



Using two of the shorter M12 bolts with **blue loctite** and lock washers from **hardware kit 450640 ③**, install the **R3** plate on the **right roll**. Bolts should be inserted at the appropriate locations at the front and middle of the roll.

Using two of the shorter M12 bolts with **blue loctite** and lock washers from **hardware kit 450640 ③**, install the **L3** plate on the **left roll**. Bolts should be inserted at the appropriate locations at the front and middle of the roll.

Torque bolts on both the left and the right rolls to 100ft/lbs.

Rotate the head as it would in normal operation to access the last face of the shaft.

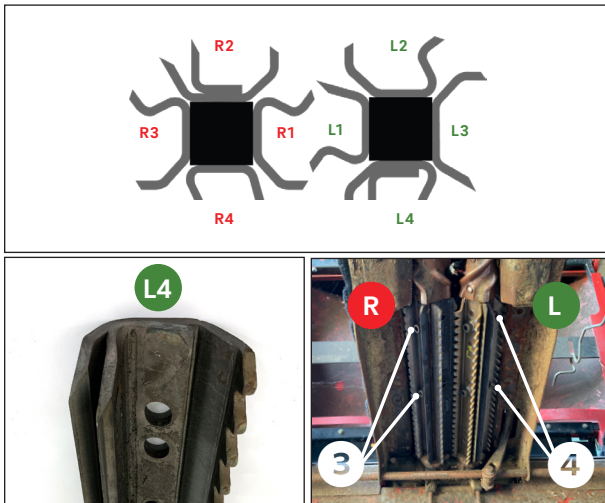
# INSTALLATION INSTRUCTIONS

CASE IH 3000 SERIES



## STEP 6

### INSTALL R4 AND L4



Using two of the shorter M12 bolts with **blue loctite** and lock washers from **hardware kit 450640** ③, install the **R4** plate on the **right roll**. Bolts should be inserted at the appropriate locations at the front and middle of the roll.

Using two of the shorter M12 bolts with **yellow loctite** and lock washers from **hardware kit 450640** ④, install the two **L4** plates on the **left roll**. Bolts should be inserted at the appropriate locations at the front and middle of the roll.

**NOTE:** The larger **L4** plate(450424)should be installed against the shaft with the smaller **L4** plate (450425) installed on the larger **L4** plate. The bolts will go through both plates.

Torque bolts on both the left and the right rolls to 100ft/lbs.

## STEP 7

### INSTALL REAR THROUGH BOLTS



The longer M12 bolts will be used in the hole locations at the rear of the roll.

Insert the longer M12 bolt with **yellow loctite** ⑥ in the rear hole position of the **R4** plate, through the shaft and then through the two **R2** plates. Secure with washer and nut.

On the opposite roll, insert the longer M12 bolt with **yellow loctite** ⑥ in the rear hole position of the two **L4** plates, through the shaft and then through the **L2** plate. Secure with washer and nut.

**NOTE:** If 360 YIELD SAVER chains are installed, they may need to be removed before installing the through bolts.

## STEP 7 CONTINUED...

### INSTALL REAR THROUGH BOLTS



If needed, rotate the head as it would in normal operation to access the remaining face of the shaft.

Insert the longer M12 bolt with **blue loctite** ⑤ in the rear hole position of the **R1** plate, through the shaft and then through the **R3** plate. Secure with washer and nut.

On the opposite roll, insert the longer M12 bolt with **blue loctite** ⑤ in the rear hole position of the **L1** plate, through the shaft and then through the **L3** plate. Secure with washer and nut.

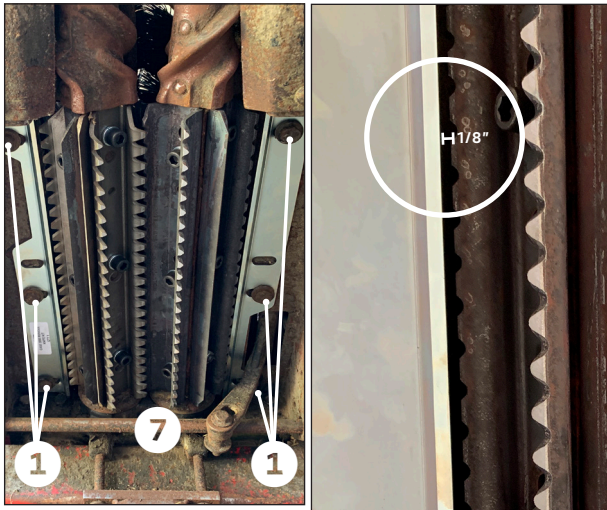
# INSTALLATION INSTRUCTIONS

CASE IH 3000 SERIES



## STEP 8

### INSTALL RESIDUE KNIVES



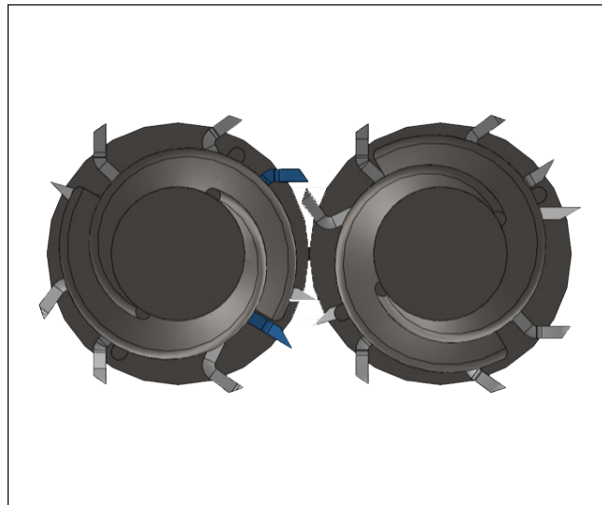
Using previously removed hardware ❶ install the 360 residue knives ❷.

**NOTE:** Before completely tightening, ensure there is approximately 1/8" gap between the residue knife and the 360 CHAINROLL plates.

Rotate the rolls at least one revolutions to ensure there is no interference between the knives.

Repeat steps 1-8 for the remaining rows.

## INSTALLATION COMPLETE



**NOTE:** Ensure cutting flutes are properly timed. As long as matching knives (R1 and L1, R2 and L2, etc) are adjacent to each other and the single cutting flute goes in between dual cutting flutes on the opposite roll, the rolls should be timed correctly.

Refer to normal OEM procedure for further adjustments.

