



360 DRAG CHAIN™

INSTALLATION INSTRUCTIONS

FOR BOTH DRAG CHAIN UPDATE KIT & EXTENSION UPDATE KIT



360YIELDCENTER.COM

FOR QUESTIONS PLEASE CONTACT OUR
PRODUCT SUPPORT TEAM AT 309-300-3120



INSTALLATION INSTRUCTIONS

DRAG CHAIN UPDATE KIT - NO EXTENSION KIT

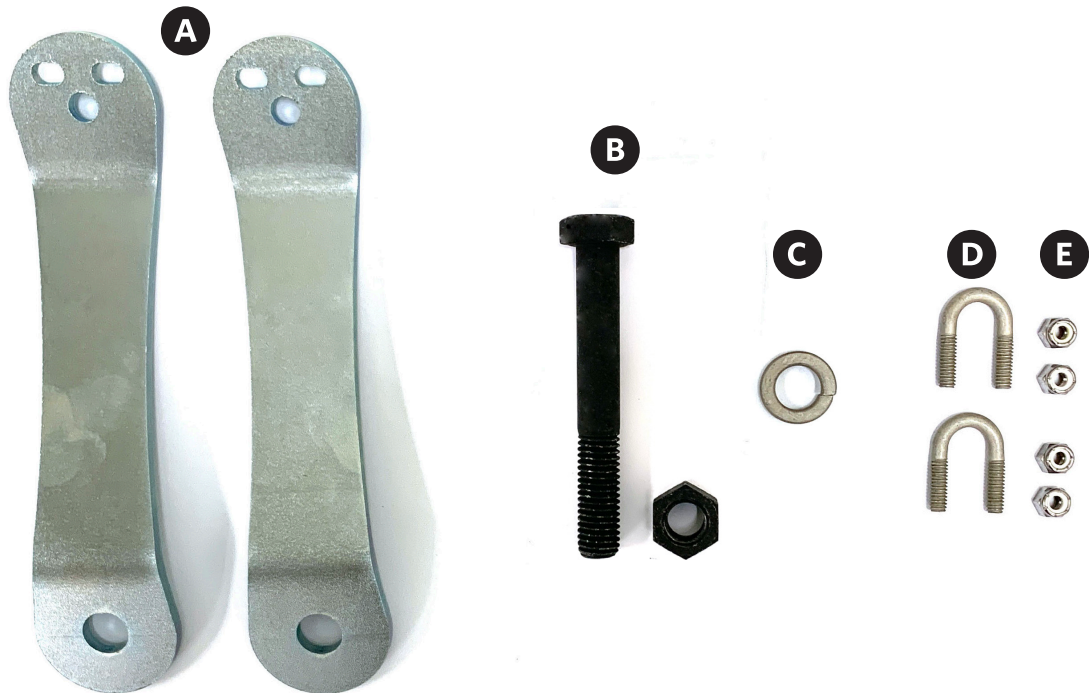


INCLUDED IN DRAG CHAIN UPDATE KIT

- A** CHAIN BRACKET
- B** LEFT HAND BOLT AND NUT
- C** LOCK WASHER
- D** (2) U-BOLTS
- E** (4) NYLOCK NUTS

Please re-use the following from your previously installed 360 DRAG CHAIN kit:

- RIGHT HAND BOLT AND NYLOCK NUT
- (4) BUSHINGS
- DRAG CHAIN

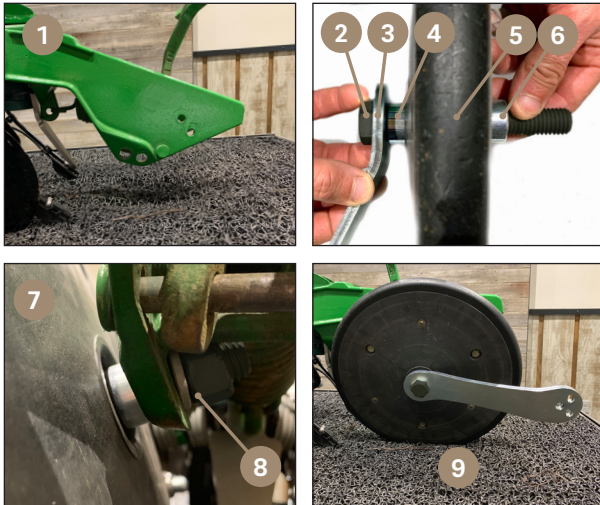


INSTALLATION INSTRUCTIONS

DRAG CHAIN UPDATE KIT - NO EXTENSION KIT



STEP 1 INSTALL LEFT CHAIN BRACKET



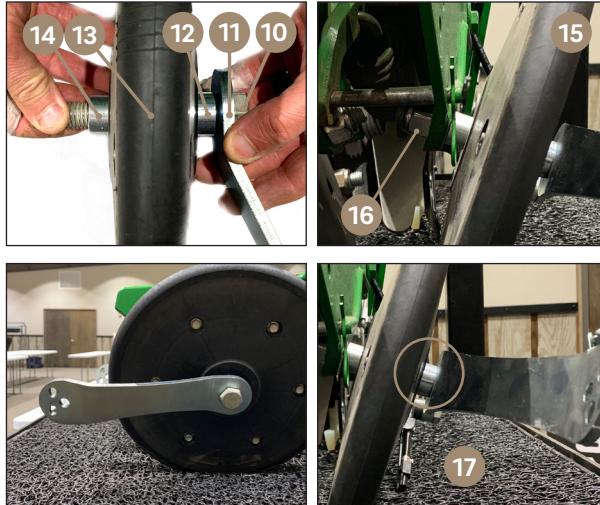
1 Using a 15/16" socket and wrench, remove closing wheels and previous 360 DRAG CHAIN kit. Keep the right hand bolt and nylock nut, all four bushings, and the chain. All other pieces of the previous 360 DRAG CHAIN kit can be discarded.

Starting with the left side, insert the new long 15/16" bolt left hand bolt 2 through a new chain bracket 3, previous bushing 4, left closing wheel 5, and previous OEM bushing 6.

7 Reinstall left closing wheel assembly on casting. Secure with new lock washer and nut 8 and tighten using 15/16" socket and wrench.

NOTE: 9 As you tighten, ensure chain bracket remains parallel with the top of the closing system.

STEP 2 INSTALL RIGHT CHAIN BRACKET

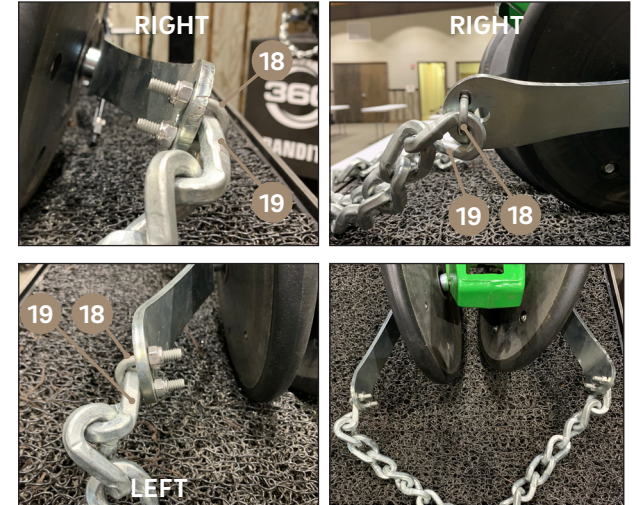


On the right side, insert the previous long 15/16" bolt right hand bolt 10 through a new chain bracket 11, previous bushing 12, right closing wheel 13, and previous OEM bushing 14.

15 Reinstall right closing wheel assembly on casting. Secure with previous nylock nut 16 and tighten using 15/16" socket and wrench, ensuring the chain bracket remains parallel with the top of the closing system.

NOTE: 17 The closing wheels should not make contact with the chain brackets. If contact occurs, an extra bushing should be installed to create adequate spacing between the closing wheel and the chain bracket.

STEP 3 INSTALL CHAIN



Using one new u-bolt 18 and two new nylock nuts on each side, attach previous drag chain 19 to the new chain bracket. Tighten u-bolts on chain and repeat for the other side.

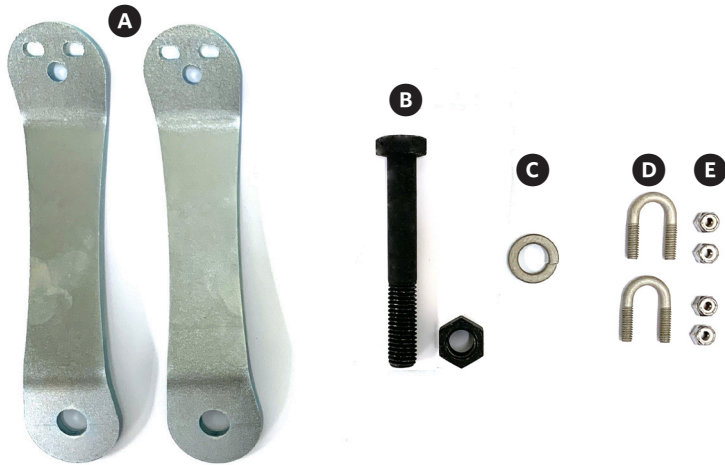
INSTALLATION COMPLETE

INSTALLATION INSTRUCTIONS

DRAG CHAIN UPDATE KIT + EXTENSION UPDATE KIT



DRAG CHAIN UPDATE KIT



INCLUDED IN DRAG CHAIN UPDATE KIT

- A** (2) CHAIN BRACKETS
- B** LEFT HAND BOLT AND NUT
- C** LOCK WASHER
- D** (2) U-BOLTS
- E** (4) NYLOCK NUTS

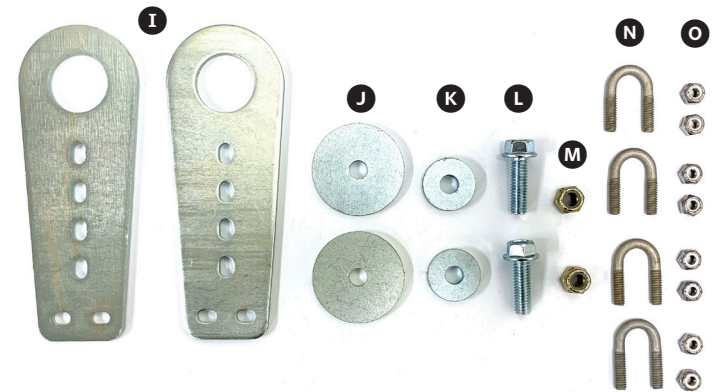
Please re-use the following from your previously installed 360 DRAG CHAIN kit:

RIGHT HAND BOLT AND NYLOCK NUT

(4) BUSHINGS

DRAG CHAIN

EXTENSION UPDATE KIT



INCLUDED IN EXTENSION UPDATE KIT

- I** (2) EXTENSION ARMS
- J** (2) ROUND PLATES
- K** (2) BUSHINGS
- L** (2) BOLTS
- M** (2) NUT
- N** (4) U-BOLTS
- O** (8) NYLOCK NUTS

You will not re-use anything from your previously installed extension kit.

INSTALLATION INSTRUCTIONS

DRAG CHAIN + EXTENSION KIT



STEP 1

INSTALL LEFT CHAIN BRACKET



NOTE: The chain extension kit is only needed when spiked-style closing wheels are used.

① Using a 15/16" socket and wrench, remove closing wheels and previous 360 DRAG CHAIN and Extension kits. Keep the right hand bolt and nylock nut, all four bushings, and the chain. All other pieces of the previous 360 DRAG CHAIN and Extension kits can be discarded.

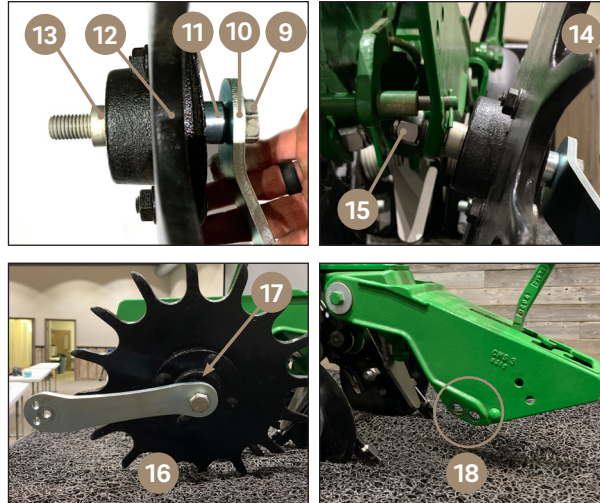
Starting with the left side, insert the new long 15/16" bolt left hand bolt ② through a new chain bracket ③, previous bushing ④, left closing wheel ⑤, and previous OEM bushing ⑥.

⑦ Reinstall left closing wheel assembly on casting. Secure with new lock washer and nut ⑧ and tighten using 15/16" socket and wrench.

NOTE: ⑨ As you tighten, ensure chain bracket remains parallel with the top of the closing system.

STEP 2

INSTALL RIGHT CHAIN BRACKET



On the right side, insert previous long 15/16" bolt right hand bolt ⑨ through a new chain bracket ⑩, previous bushing ⑪, right closing wheel ⑫, and previous OEM bushing ⑬.

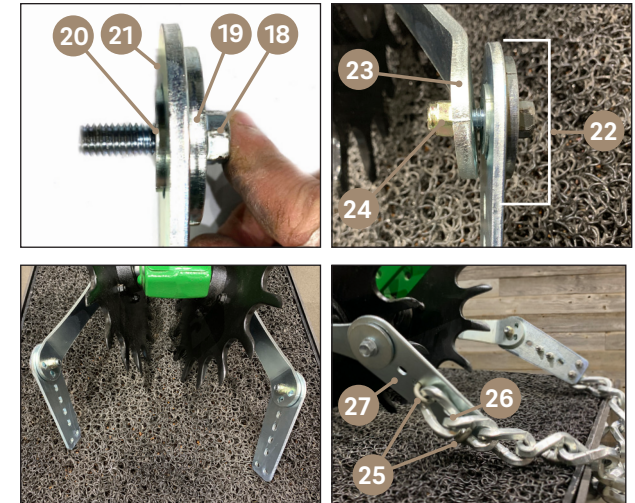
⑭ Reinstall right closing wheel assembly on casting. Secure with previous nylock nut ⑮ and tighten using 15/16" socket and wrench, ensuring the chain bracket remains parallel with the top of the closing system ⑯.

NOTE: ⑰ The closing wheels should not make contact with the chain bracket. If contact occurs, an extra bushing should be installed to create adequate spacing between the closing wheel and the chain bracket.

NOTE: ⑱ If the spiked wheels do not adequately clear the 360 BANDIT unit, put both closing wheels in the furthest back hole on the casting.

STEP 3

INSTALL EXTENSION ARMS AND CHAIN



Insert new 9/16" bolt ⑱ through the new round plate ⑲, new bushing ⑳, and then the new extension arm ㉑. Repeat for second extension arm assembly.

Attach the extension arm assemblies ㉒ to the outside of both the left and right chain brackets ㉓. Secure with new nut ㉔ and tighten with 9/16" socket or wrench.

NOTE: The extension bracket should be free moving when tightening is complete.

Using (2) new u-bolts and (4) nylock nuts ㉕ on each side, attach previous drag chain ㉖ to new chain extension bracket ㉗ using any of the provided holes. Tighten u-bolts on chain and repeat for the other side.

Adjust chain length: lift chain and check to make sure it can't get caught in closing wheels. If it does, loosen U-bolts and move them to the next link to shorten the chain. Recheck and adjust as needed.

INSTALLATION COMPLETE

