

360 WAVE

360

— : —



360 WAVE™

INSTALLATION INSTRUCTIONS
KINZE MODELS
WITH 360 BANDIT



360YIELDCENTER.COM

FOR QUESTIONS PLEASE CONTACT OUR
PRODUCT SUPPORT TEAM AT 309-300-3120

3.11.20 • V2

All trademarks are the property of 360 Yield Center, its affiliates and/or its licensors. ©2020 360 Yield Center. All rights reserved.

INSTALLATION INSTRUCTIONS

KINZE MODELS WITH BANDIT



STEP 1

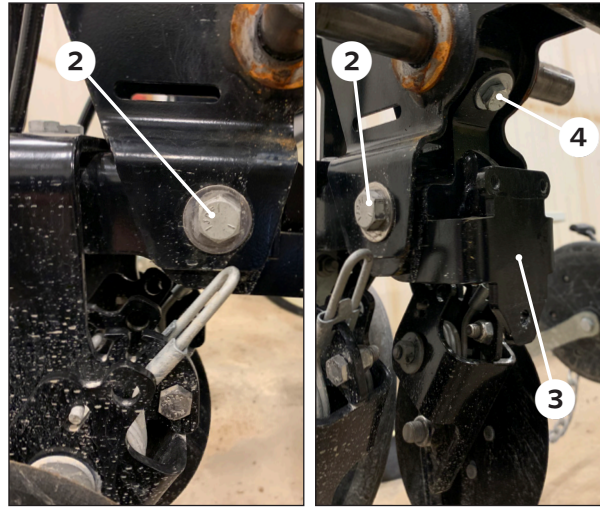
PREPARE THE ROW UNIT



Remove both gauge wheels and the right-side opening disk **1**.

STEP 2

INSTALL WAVE MOUNTING BRACKET



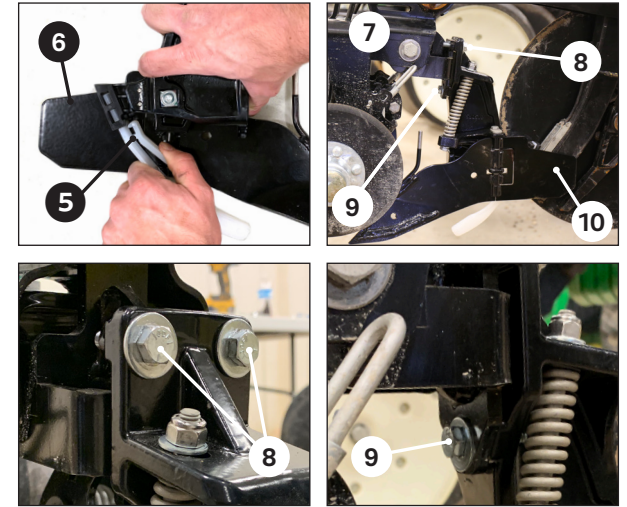
Back the nuts off of the bolts **2** that secure the BANDIT unit to the closing casting.

Slide the WAVE bracket **3** in onto those same bolts **2**.
Reinstall the nuts to secure.

Install the additional bolt **4** in the top of the WAVE bracket.

STEP 3

INSTALL WAVE ASSEMBLY



Install firmer **5** on the wave assembly **6** by pinching the top of the firmer together and slide it into place.

Install the WAVE assembly on the WAVE mounting bracket using the provided hardware **7**. Two bolts will be inserted on the front **8** and one on the back **9** of the assembly.

NOTE: When installing the WAVE assembly ensure the blade trash guard is flush against the seed tube protector **10**.

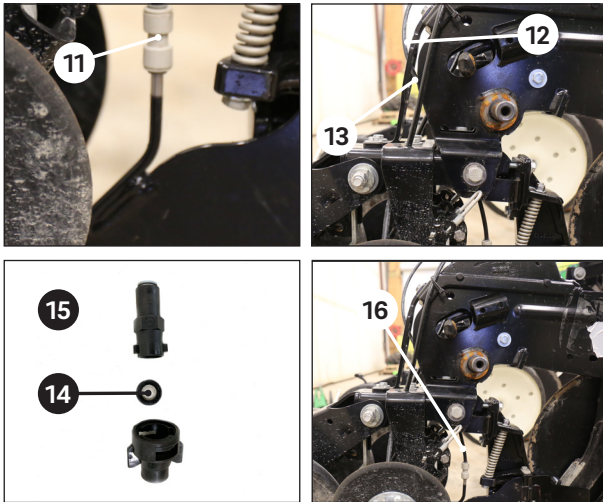
INSTALLATION INSTRUCTIONS

KINZE MODELS WITH BANDIT



STEP 3

INSTALL PLUMBING



Install the push-to-connect fitting **11** on the liquid tube on WAVE assembly.

Route the 1/4" push-to-connect line **12** through the hole **13** on the row unit and connect it to the push-to-connect fitting just installed.

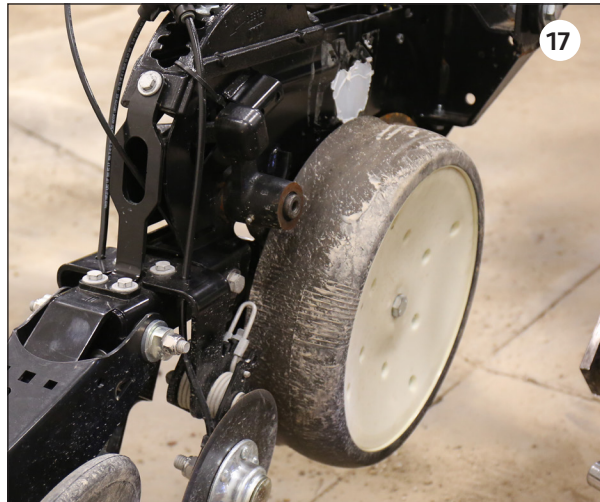
Assemble the orifice into the rubber grommet **14**.

Assemble the three plumbing components in the arrangement shown above **15**.

Attach the plumbing assembly to the other end of the 1/4" line **16**. Secure the line to the row unit using zip ties as you see fit.

STEP 4

REINSTALL GAUGE WHEELS AND DISK



Reinstall right side disk and both gauge wheels using original hardware **17**.

INSTALLATION COMPLETE

