



360 Y-DROP[®]

BREAKAWAY MAGNET REPLACEMENT INSTRUCTIONS



360YIELDCENTER.COM

FOR QUESTIONS PLEASE CONTACT OUR
PRODUCT SUPPORT TEAM AT 309-300-3120

7.6.20 • V1

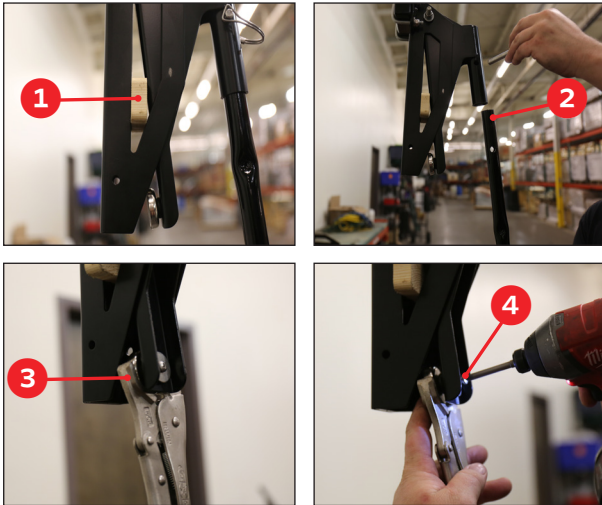
All trademarks are the property of 360 Yield Center, its affiliates and/or its licensors. ©2019 360 Yield Center. All rights reserved.



BREAKAWAY MAGNET REPLACEMENT INSTRUCTIONS



STEP 1 REMOVE OLD MAGNET



Trip the breakaway and insert a stop block **1** to hold the breakaway open.

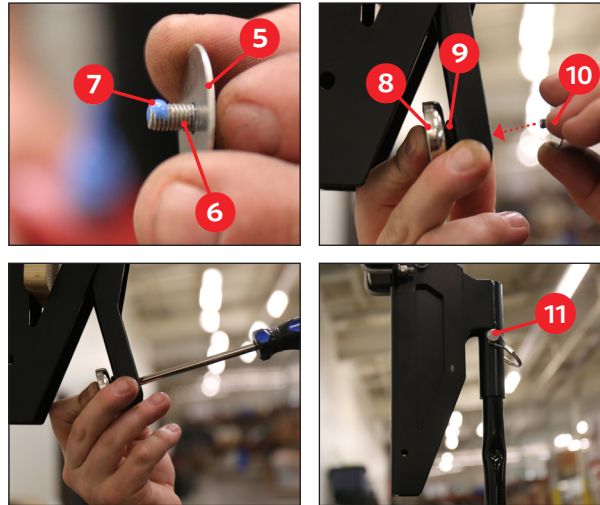
Remove the riser tube **2**. Keep pin and rise tube as these will be reinstalled at the completion of the magnet replacement.

Clamp magnet body with vice grips **3**.

Using an impact, remove screw **4** from the magnet body.

Discard the magnet, magnet body, washer and screw.

STEP 2 INSTALL REPLACEMENT MAGNET



Slide new washer **5** onto the new screw **6**.

Apply a drop of threadlocker **7** to the screw.

Place the new magnet **8** into the rubber grommet **9** on the inside of the breakaway.

Install the screw and washer **10** into the magnet body.

Use hand screw driver to tighten only to the point that the magnet spins.

Reinstall the riser tube and secure with pin **11**.

REPLACEMENT COMPLETE

