



360 BANDIT™

INSTALLATION INSTRUCTIONS
JOHN DEERE MAXEMERGE MODELS



360YIELDCENTER.COM

FOR QUESTIONS PLEASE CONTACT OUR
PRODUCT SUPPORT TEAM AT 309-300-3120

2.19.21 • V14

All trademarks are the property of 360 Yield Center, its affiliates and/or its licensors. ©2019 360 Yield Center. All rights reserved.

INSTALLATION INSTRUCTIONS

JOHN DEERE MAXEMERGE



BEFORE YOU BEGIN...

HELPFUL TOOLS



Hammer/Mallet

Wrench Sizes: 15/16" and 7/16"

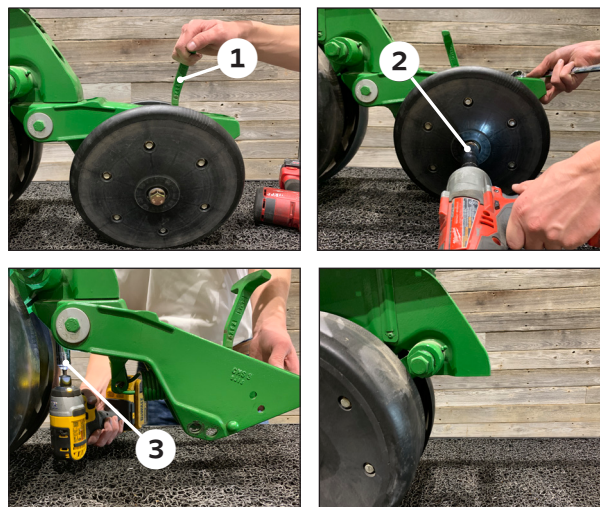
Socket Sizes: 16mm, 15/16", 18mm and 7/16"

Impact

Torque Wrench

STEP 1

REMOVE CLOSING SYSTEM



Release spring ① to remove tension from closing system.

NOTE: If the optional chains kit is not being installed do not remove the closing wheels.

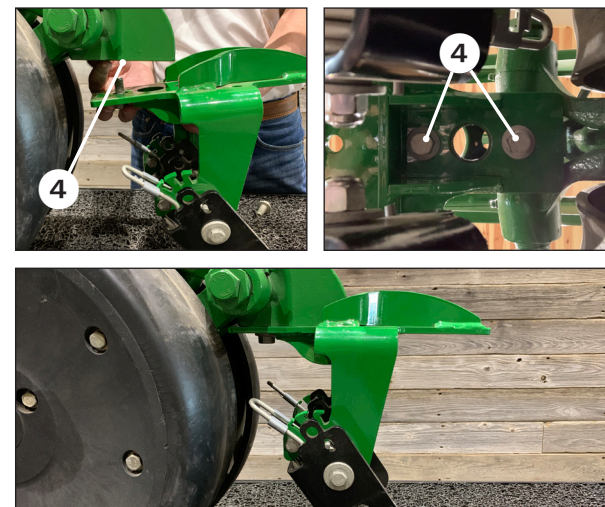
Remove closing wheels ② with a 15/16" socket and wrench. Retain hardware.

If present, remove insecticide attachment.

Using an 18mm socket remove the two bolts that attach the closing system casting ③ to the row unit and set the closing system casting aside. Bolts can be discarded.

STEP 2

INSTALL BANDIT UNIT



Using the two short M12 Bolts ④ attach the 360 BANDIT unit (long leg to the rear) to the row unit where the closing system casting was just removed.

Tighten with 16 mm socket. Torque bolts to 42.2 ft lbs. **Ensure not to over tighten bolts.**

NOTE: The 360 BANDIT arms are designed to flex. This may cause variability in the gap between the pivot arm bolts.

NOTE: The supplied 3/8" x 1" bolt installed in the BANDIT pin up hole is to be used as a "zero" setting and as a stop in case of spring disengagement.

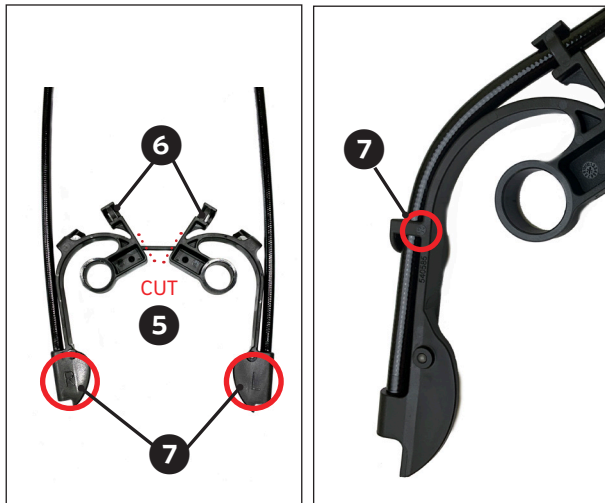
INSTALLATION INSTRUCTIONS

JOHN DEERE MAXEMERGE



STEP 3

PREPARE HOSE GUIDES



Using side-cutters, cut the two hose guides apart **5**.

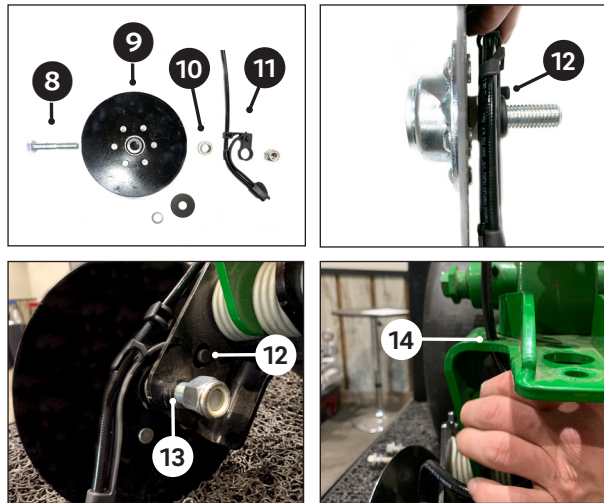
Ensure the hose is routed through the top two holes in the hose guide **6**.

Hose guides are labeled "L" left and "R" right. Location of the "L" and "R" marking may vary - see pictures above for an example of each possible marking location **7**.

NOTE: When installing hoseguides on the row unit, left and right are determined from the operators seat.

STEP 4

INSTALL DISK ASSEMBLY



Insert 5/8" X 3" bolt **8** through the disk **9**. Place small shim washer then fender washer over the bolt. Insert bushing **10** (large side first) and hose guide assembly **11** (ear tab **12** facing in).

Slide bolt of the disk assembly into the lower hole on the bandit **13**, aligning the ear tab **12** with corresponding upper hole and secure with lock nut.

Tighten with 15/16" socket and wrench. Check to ensure that the disk freely turns. If the disk does not freely turn, back off the lock nut slightly until the disk freely turns.

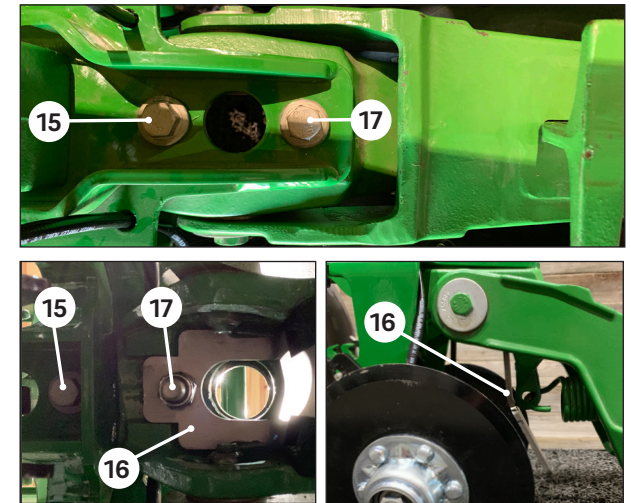
Using a mallet, install provided dust caps over disk bolt heads.

Route application hose through hole in top of 360 BANDIT frame **14**.

Repeat for other side.

STEP 5

REINSTALL CLOSING SYSTEM



Insert the shorter of the two remaining M12 bolts and a washer in the front hole **15** of the 360 BANDIT unit and then through the closing system casting. Secure with nut.

Insert the rock guard **16** under the closing system casting aligning the remaining holes. Insert the long M12 bolt **17** through the BANDIT unit, closing system casting, and then the rock guard. Secure with nut.

Torque bolts to 42.2 ft lbs. **Ensure not to over tighten bolts.**

Reinstall insecticide attachment, if present.

INSTALLATION INSTRUCTIONS

JOHN DEERE MAXEMERGE



STEP 6

REINSTALLING CLOSING WHEELS



NOTES: If the closing wheels were removed but you are not installing the optional Chain Kit, reinstall the closing wheels at this time.

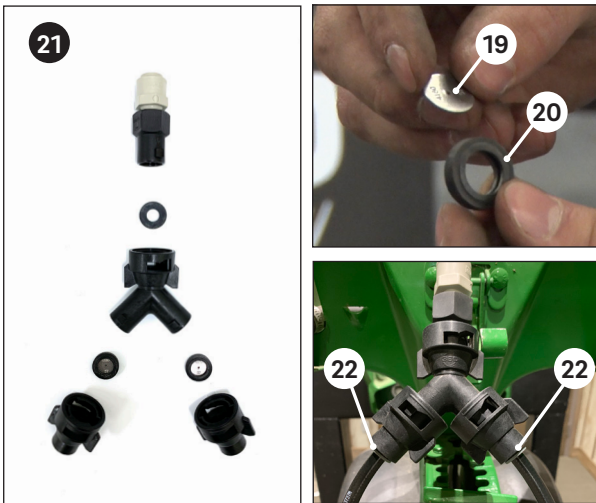
If the optional Chain Kit is being installed, do not reinstall the closing wheels.

If pinning up 360 BANDIT disks while running spiked closing wheels, mount spiked closing wheels in rear most hole.

Reinstall the closing wheels onto the closing system casting using previously removed hardware (18).

STEP 7

ASSEMBLE PLUMBING



Install orifice plates (19) in the rubber grommets (20).

Assemble plumbing components in the arrangement shown above (21).

Attach the plumbing assembly to each of the hoses coming from the house guides (22).

NOTE: If hoses are not fully seated in the push to connect, they will leak. Hoses seat 7/8" of an inch deep or until you hear a snap.

The supplied push to connect adapter in the 360 BANDIT kit connects to 3/8" push to connect compatible hose.

Secure hoses to row unit with provided zip ties.

INSTALLATION COMPLETE



PLUMBING RECOMMENDATIONS:

To prevent excess fertilizer from dribbling out of the hoses when product application is shut off, install one push to connect polypropylene (Inlet x Outlet) 3/8" O.D. check valve (not included) in the plumbing to each row prior to the 360 BANDIT orifices. Check valve is available at Dultmeier Sales (Item #BUCV1103-P38).

A 50 mesh strainer (not included) can be used in the complete plumbing system between tanks and 360 BANDIT to help prevent debris from blocking orifices.