



360 BANDIT™

INSTALLATION INSTRUCTIONS
JOHN DEERE 7000 & KINZE 2000 MODELS



360YIELDCENTER.COM

FOR QUESTIONS PLEASE CONTACT OUR
PRODUCT SUPPORT TEAM AT 309-300-3120

2.19.21 • V9

All trademarks are the property of 360 Yield Center, its affiliates and/or its licensors. ©2019 360 Yield Center. All rights reserved.

INSTALLATION INSTRUCTIONS

JOHN DEERE 7000 & KINZE 2000



BEFORE YOU BEGIN...

HELPFUL TOOLS



Hammer/Mallet

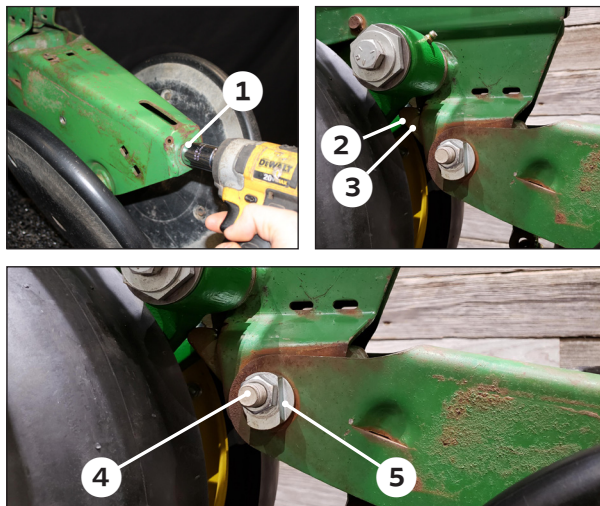
Wrench Sizes: 3/4", 9/16" and 15/16"

Socket Sizes: 3/4", 9/16" and 15/16"

Impact

STEP 1

REMOVE CLOSING SYSTEM



Using a 3/4" socket, withdrawal the tensioning bolt **1** from the spring.

Using a 9/16" socket remove the bolt **2** that holds the top of the closing wheel arm stop **3** to the row unit.

NOTE: Gauge wheels may need to be held up while removing the bolt.

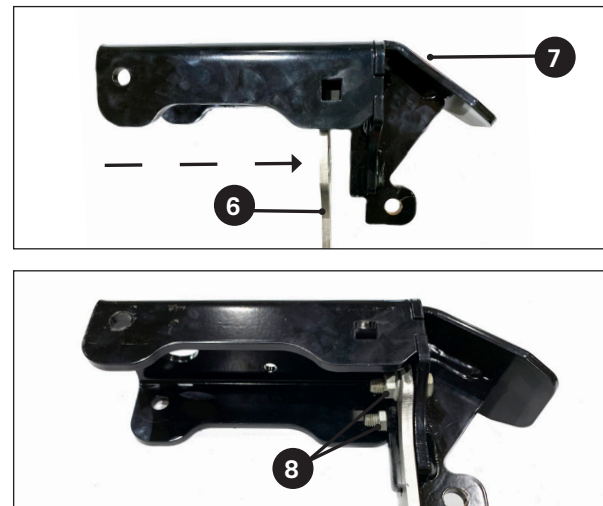
Using a 3/4" socket and wrench remove bolts **4** holding closing system on. Keep the bushing **5** and discard the bolts, washers, and nuts.

Remove spring from closing wheel arm stop and if not already, disengage from the closing system.

NOTE: Retain closing wheel arm stop and hardware in a safe location for installing closing wheels without 360 BANDIT.

STEP 2

INSTALL ROCK GUARD



Attach the rock guard **6** to the underside of the extension bracket **7** using two bolts **8**. Secure with nut.

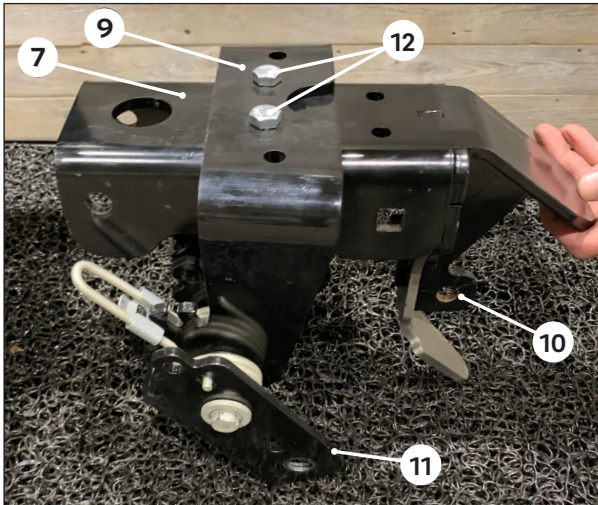
INSTALLATION INSTRUCTIONS

JOHN DEERE 7000 & KINZE 2000



STEP 2

ASSEMBLE BANDIT ARM & EXTENSION BRACKET



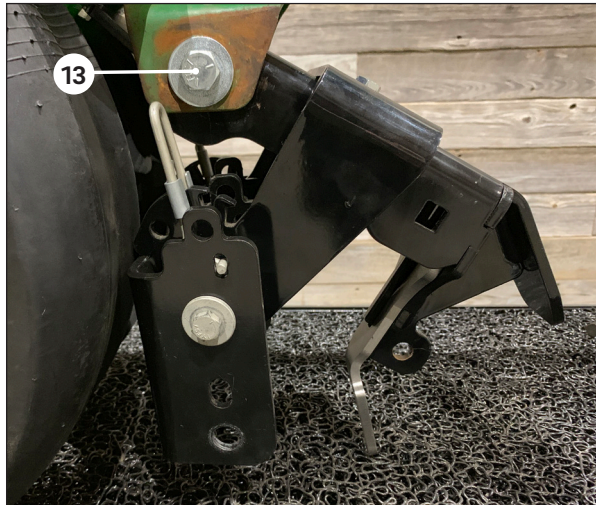
Slide the BANDIT arm assembly **9** over the extension bracket **7**. Ensure BANDIT arms **10** are facing in the rearward direction towards the spring hook **11**.

Secure arm assembly to the front holes **12** on the extension bracket with (2) 3/8" x 1-1/2" bolts and 3/8" flange nuts.

Tighten with 9/16" socket and wrench.

STEP 3

INSTALL EXTENSION BRACKET ASSEMBLY



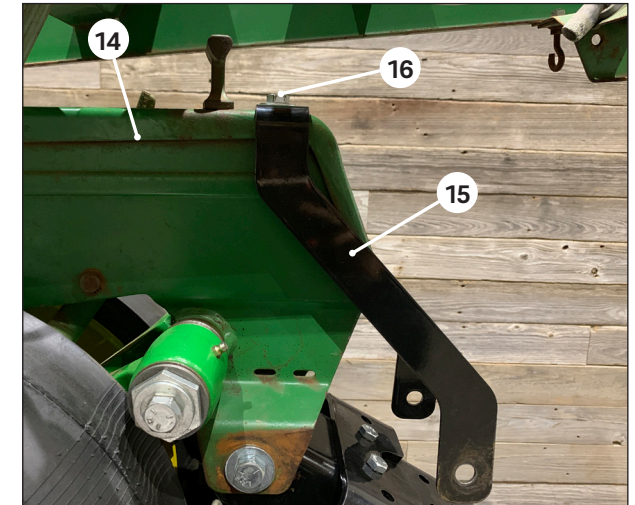
Align holes in extension bracket with the holes on the row unit. Install flat washer on 1/2" x 1-1/2" bolt from hardware kit #540615. Slide bolt through extension bracket and row unit hole (bolt head on the outside) **13**. Install another washer and hand tighten with nyloc nut from hardware kit #540615. Do not tighten.

NOTE: Leave nyloc nuts loose on both sides until after the support strap is installed in STEP 5.

Repeat on other side.

STEP 4

INSTALL SUPPORT STRAP



Using a 9/16" socket, remove the bolt from the top of the depth adjustment assembly **14** and discard.

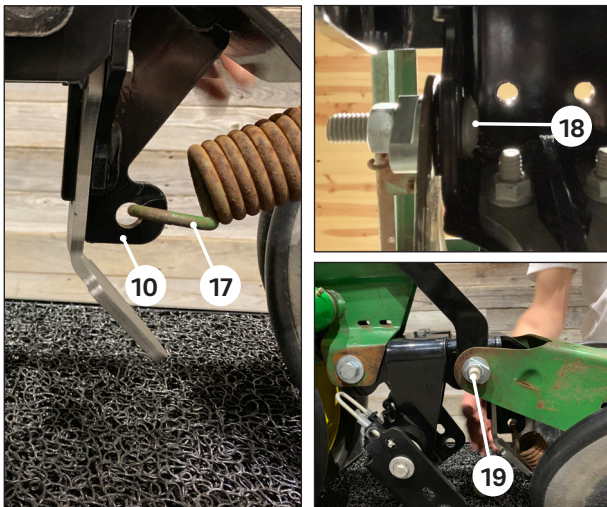
Secure the top of the support strap **15** to the depth adjustment assembly using the supplied 3/8" x 1-1/4" bolt **16** and washer from hardware kit #540615. Ensure all bracketry is flush when bolt is installed.

INSTALLATION INSTRUCTIONS

JOHN DEERE 7000 & KINZE 2000



STEP 5 INSTALL CLOSING SYSTEM



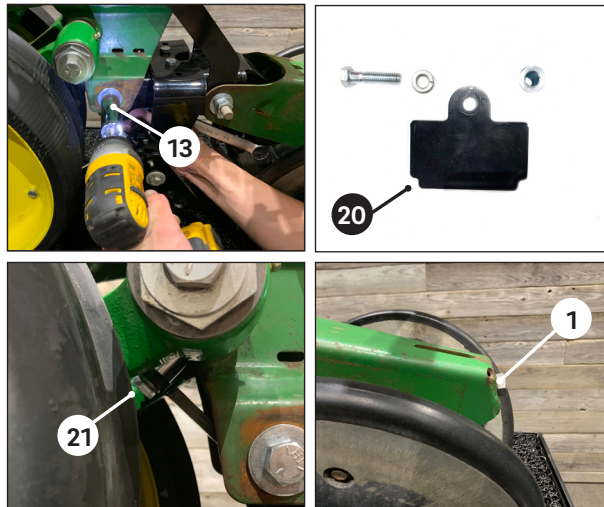
Attach the spring **17** to the spring hook **10** on the extension bracket.

BEFORE THE NEXT STEP PLEASE NOTE: The amount of spacer washers required will differ between planters/row units. Spacer washers are provided to fill the gap between the closing wheel arms and the BANDIT extension bracket. Use the quantity of spacer washers required for your system.

Insert the 2-1/4" carriage bolt with flat head on the inside **18**, through the square carriage bolt hole on the extension bracket and through the support strap arms. Install any needed washers and then slide bolt through closing system arms. Install previously set aside bushing and secure with large flat washer and 1/2" nyloc nut **19** from hardware kit #540620 using 3/4" socket.

Repeat on other side.

STEP 5 (CONTINUED)

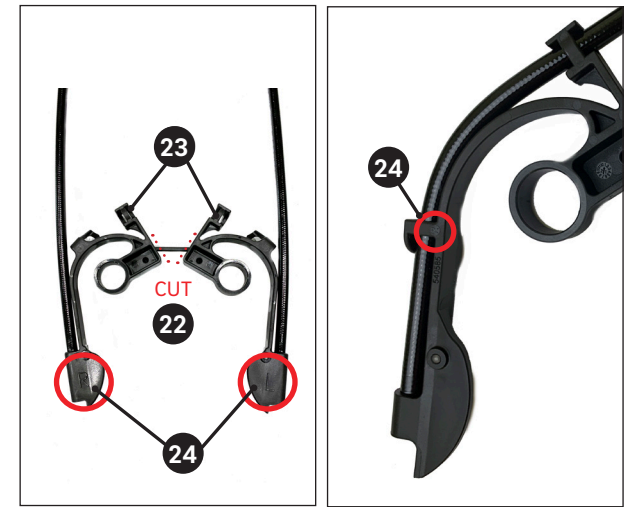


Tighten the nyloc nuts **13** that were left loose in STEP 3 with a 3/4" socket and wrench, securing the BANDIT extension bracket to the row unit.

Install gualge wheel arm stop **20** using supplied bolt, lock washer and nut **21**.

Install tensioning bolt **1** onto spring and apply applicable tension.

STEP 6 PREPARE HOSE GUIDES



Using side-cutters, cut the two hose guides apart **22**.

Ensure the hose is routed through the top two holes in the hose guide **23**.

Hose guides are labeled "L" left and "R" right. Location of the "L" and "R" marking may vary - see pictures above for an example of each possible marking location **24**.

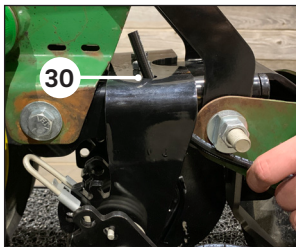
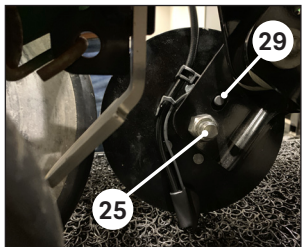
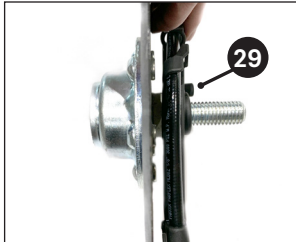
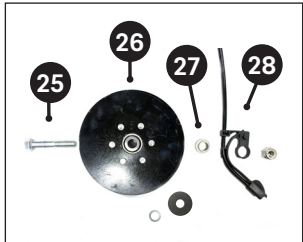
NOTE: When installing hoseguides on the row unit, left and right are determined from the operators seat.

INSTALLATION INSTRUCTIONS

JOHN DEERE 7000 & KINZE 2000



STEP 7 INSTALL DISK ASSEMBLY



Insert 5/8" X 3" bolt **25** through the disk **26**. Place small shim washer then fender washer over the bolt. Insert bushing **27** (large side first) and hose guide assembly **28** (ear tab **29** facing in).

Slide bolt of the disk assembly into the lower hole on the bandit **25**, aligning the ear tab **29** with corresponding upper hole and secure with lock nut.

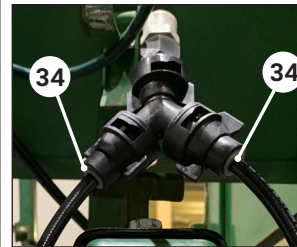
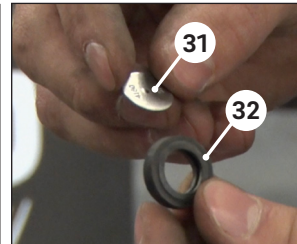
Tighten with 15/16" socket and wrench. Check to ensure that the disk freely turns. If the disk does not freely turn, back off the lock nut slightly until the disk freely turns.

Using a mallet, install provided dust caps over disk bolt heads.

Route application hose through hole in top of 360 BANDIT frame **30**.

Repeat for other side.

STEP 8 ASSEMBLE PLUMBING



Install orifice plates **31** in the rubber grommets **32**.

Assemble plumbing components in the arrangement shown above **33**.

Attach the plumbing assembly to each of the hoses coming from the house guides **34**.

NOTE: If hoses are not fully seated in the push to connect, they will leak. Hoses seat 7/8" of an inch deep or until you hear a snap.

The supplied push to connect adapter in the 360 BANDIT kit connects to 3/8" push to connect compatible hose.

Secure hoses to row unit with provided zip ties.

INSTALLATION COMPLETE



PLUMBING RECOMMENDATIONS:

To prevent excess fertilizer from dribbling out of the hoses when product application is shut off, install one push to connect polypropylene (Inlet x Outlet) 3/8" O.D. check valve (not included) in the plumbing to each row prior to the 360 BANDIT orifices. Check valve is available at Dultmeier Sales (Item #BUCV1103-P38).

A 50 mesh strainer (not included) can be used in the complete plumbing system between tanks and 360 BANDIT to help prevent debris from blocking orifices.

