



360 BANDIT™

INSTALLATION INSTRUCTIONS WHITE 8000 MODELS



360YIELDCENTER.COM

**FOR QUESTIONS PLEASE CONTACT OUR
PRODUCT SUPPORT TEAM AT 309-300-3120**

2.19.21 • V5

All trademarks are the property of 360 Yield Center, its affiliates and/or its licensors. ©2019 360 Yield Center. All rights reserved.

INSTALLATION INSTRUCTIONS

WHITE 8000



BEFORE YOU BEGIN...

HELPFUL TOOLS



Hammer/Mallet

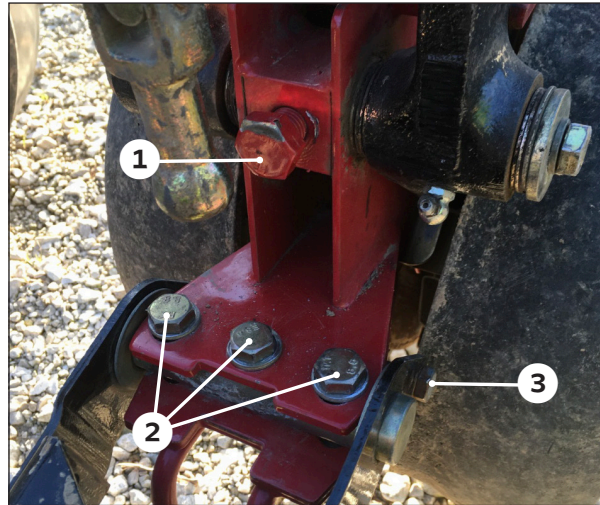
Wrench Sizes: 15/16", 10mm, 12mm, and 16mm

Socket Sizes: 15/16", 10mm, 12mm, and 16mm

Impact Driver/ Socket Wrench

STEP 1

REMOVE CLOSING SYSTEM



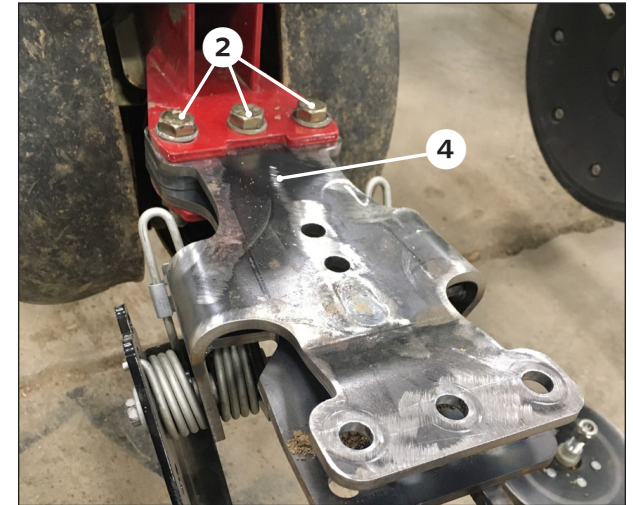
Remove (1) 16mm bolt **1**, (3) 12 mm bolts **2** and stop bolt **3** to uninstall the closing system from the row unit.

Discard the 16 mm bolt. Retain the 12 mm bolts, nuts, and washers and stop bolt.

With all the hardware removed, remove the closing system and set aside.

STEP 2

INSTALL MAIN BANDIT FRAME



Slide the main BANDIT frame **4** in where the closing system was just removed. Loosely secure with the (3) 12 mm bolts, nuts, and washer previously removed **2**.

Ensure the BANDIT frame is in-line with the row unit before completely tightening.

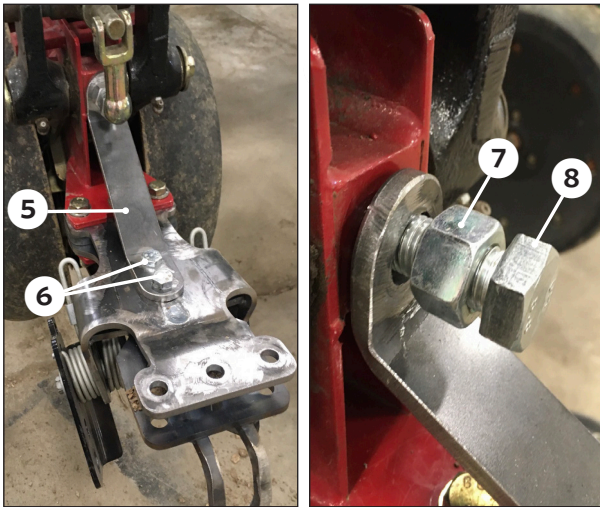
INSTALLATION INSTRUCTIONS

WHITE 8000



STEP 3

INSTALL SUPPORT STRAP



Place the support strap ⑤ on top the main BANDIT frame aligning the two holes in the strap with the two holes in the center of the main BANDIT frame.

Loosely secure the support strap to the main BANDIT frame the using (2) 10 mm bolts ⑥, washers and nuts. Do not fully tighten yet.

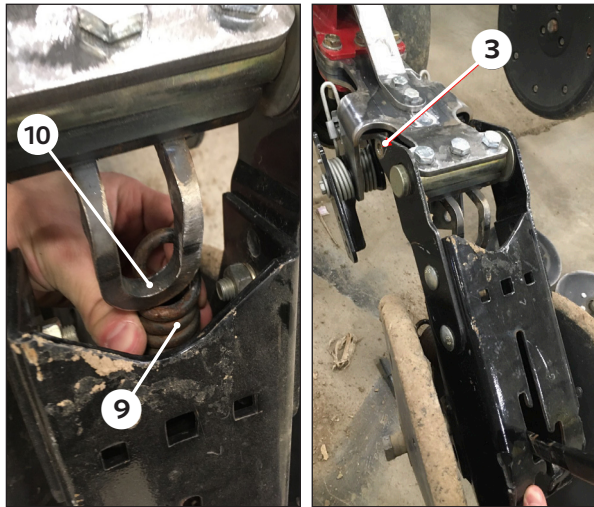
Slide the provided 16 mm nut ⑦ onto the provided 16 mm bolt ⑧. Use this bolt to secure the top of the support strap to the row unit.

NOTE: Ensure that the nut is completely tightened against the bolt first before tightening the bolt completely against the support strap.

With the 16mm nut/bolt combo completely tightened, you can now tighten the (2) 10 mm bolts.

STEP 4

RE-INSTALL CLOSING SYSTEM



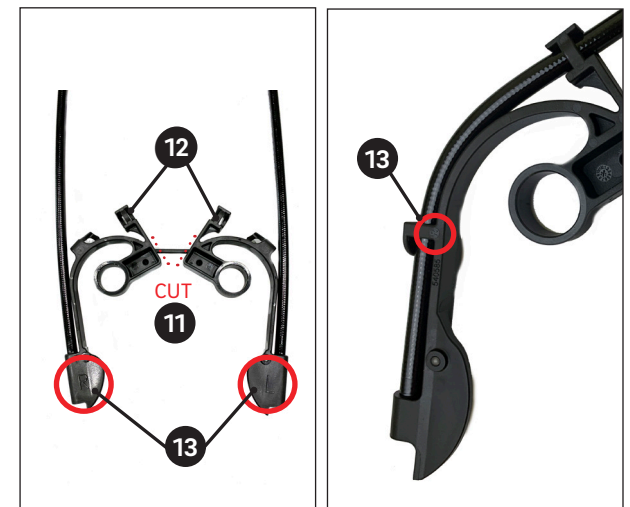
Attach the spring ⑨ from the OEM closing system to the hook ⑩ at the rear of the main BANDIT frame.

Reinstall the closing system by securing it to the rear of the main BANDIT unit using the provided (3) 12 mm bolts, washers, and nuts.

Reinstall the OEM stop bolt ③.

STEP 5

PREPARE HOSE GUIDES



Using side-cutters, cut the two hose guides apart ⑪.

Ensure the hose is routed through the top two holes in the hose guide ⑫.

Hose guides are labeled "L" left and "R" right. Location of the "L" and "R" marking may vary - see pictures above for an example of each possible marking location ⑬.

NOTE: When installing hoseguides on the row unit, left and right are determined from the operators seat.

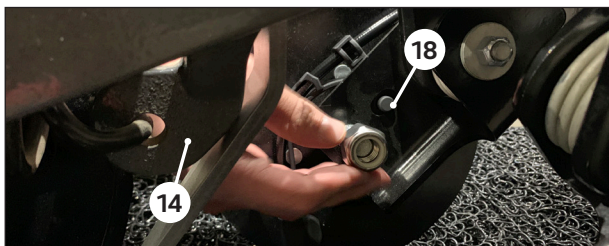
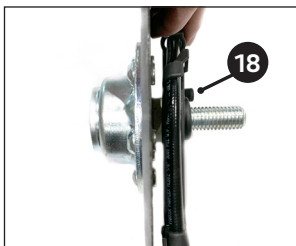
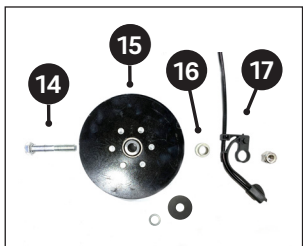
INSTALLATION INSTRUCTIONS

WHITE 8000



STEP 6

INSTALL DISK ASSEMBLIES



Insert 5/8" X 3" bolt **14** through the disk **15**. Place small shim washer then fender washer over the bolt. Insert bushing **16** (large side first) and hose guide assembly **17** (ear tab **18** facing in).

Slide bolt of the disk assembly into the lower hole on the BANDIT **14**, aligning the ear tab **18** with corresponding upper hole and secure with lock nut.

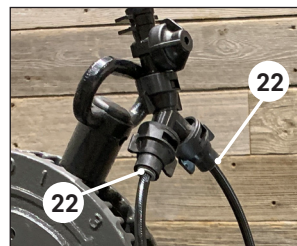
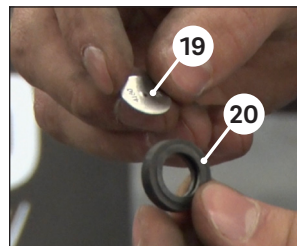
Tighten with 15/16" socket and wrench. Check to ensure that the disk freely turns. If the disk does not freely turn, back off the lock nut slightly until the disk freely turns.

Using a mallet, install provided dust caps over disk bolt heads.

Repeat for other side.

STEP 7

ASSEMBLE PLUMBING



Install orifice plates **19** in the rubber grommets **20**.

Assemble plumbing components in the arrangement shown above **21**.

Attach the plumbing assembly to each of the hoses coming from the house guides **22**.

NOTE: If hoses are not fully seated in the push to connect, they will leak. Hoses seat 7/8" of an inch deep or until you hear a snap.

The supplied push to connect adapter in the 360 BANDIT kit connects to 3/8" push to connect compatible hose.

Secure hoses to row unit with provided zip ties.

INSTALLATION COMPLETE



PLUMBING RECOMMENDATIONS:

To prevent excess fertilizer from dribbling out of the hoses when product application is shut off, install one push to connect polypropylene (Inlet x Outlet) 3/8" O.D. check valve (not included) in the plumbing to each row prior to the 360 BANDIT orifices. Check valve is available at Dultmeier Sales (Item #BUCV1103-P38).

A 50 mesh strainer (not included) can be used in the complete plumbing system between tanks and 360 BANDIT to help prevent debris from blocking orifices.