

360 WAVE

360

— : —



360 WAVE™

INSTALLATION INSTRUCTIONS
ALL JOHN DEERE MODELS
WITH 360 BANDIT



360YIELDCENTER.COM

FOR QUESTIONS PLEASE CONTACT OUR
PRODUCT SUPPORT TEAM AT 309-300-3120

2.25.21 • V6

All trademarks are the property of 360 Yield Center, its affiliates and/or its licensors. ©2020 360 Yield Center. All rights reserved.

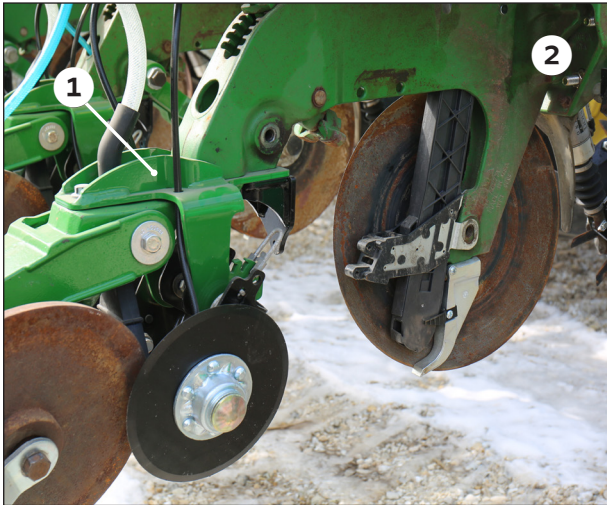
INSTALLATION INSTRUCTIONS

JOHN DEERE MODELS WITH BANDIT



STEP 1

PREPARE THE ROW UNIT



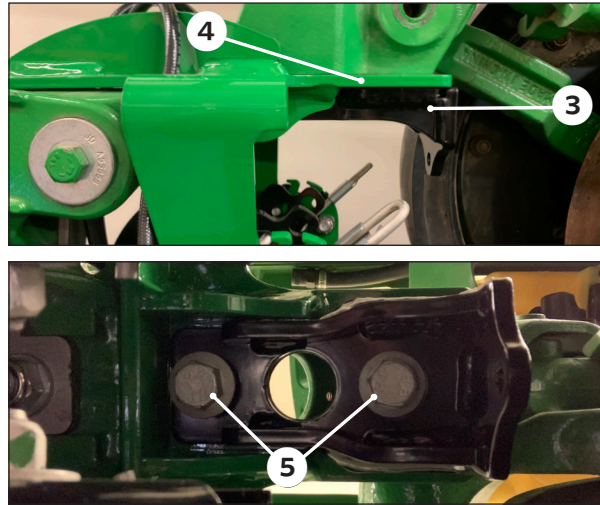
Please note before you begin:

If you are installing 360 WAVE on a 2019 or older BANDIT unit you will need to update the BANDIT bracket (1) before installing your 360 WAVE units. (Your BANDIT bracket must look like the one in the picture above to be compatible with 360 WAVE.)

Remove both gauge wheels and the right-side opening disk (2).

STEP 2

INSTALL WAVE MOUNTING BRACKET

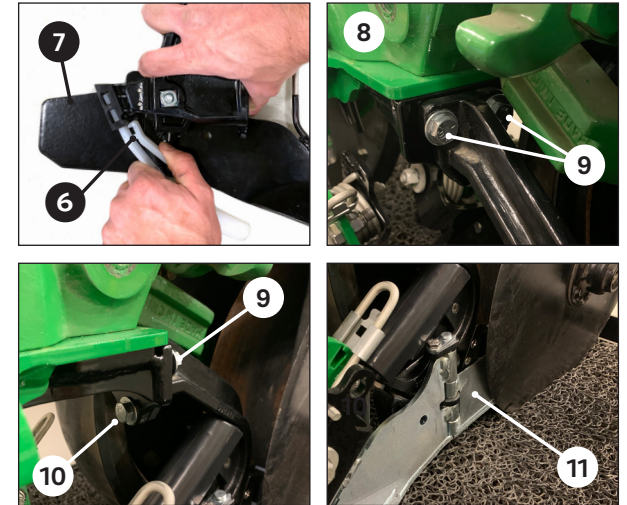


Install the WAVE mounting bracket (3) on to the BANDIT bracket (4) using the (2) bolts provided (5).

NOTE: At this point, do not completely tighten bolts as there may be adjustments required later.

STEP 3

INSTALL WAVE ASSEMBLY



Install firmer (6) on the wave assembly (7) by pinching the top of the firmer together and slide it into place.

Install the WAVE assembly on the WAVE mounting bracket using the provided hardware (8). Two bolts will be inserted on the front (9) and one on the back (10) of the assembly.

NOTE: When installing the WAVE assembly ensure the blade residue guard is flush against the seed tube protector (11).

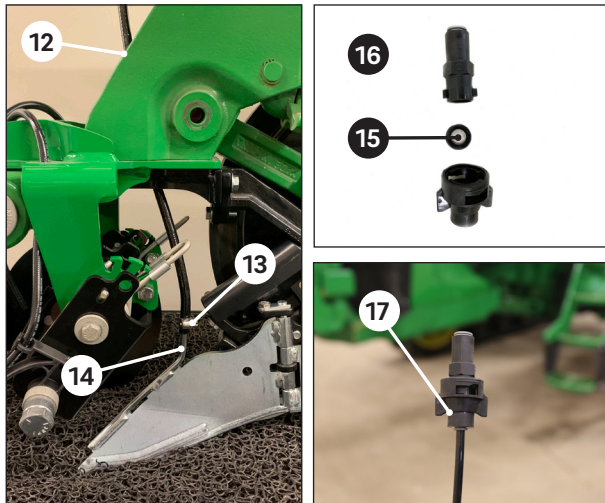
INSTALLATION INSTRUCTIONS

JOHN DEERE MODELS WITH BANDIT



STEP 3

INSTALL PLUMBING



NOTE: The remaining pictures show a row unit with the right side 360 BANDIT disk removed in order to be able to fully show the 360 WAVE unit. The BANDIT disk does not need to be removed in order to install the 360 WAVE assembly.

Route the 3/8" line through the hole on the row unit ¹².

Loosely place the hose clamp ¹³ onto the hose and install the hose over the product tube ¹⁴. Slide clamp down over hose and product tube and tighten.

Assemble the orifice into the rubber grommet ¹⁵.

Assemble the three plumbing components in the arrangement shown above ¹⁶.

Attach the plumbing assembly to the other end of the 3/8" line ¹⁷. Secure the line to the row unit using zip ties as you see fit.

STEP 4

REINSTALL GAUGE WHEELS AND DISK



Reinstall right side disk and both gauge wheels using original hardware ¹⁸.

NOTE: Ensure that the gauge wheels clear the wave on both sides. The wave unit may need to be adjusted to be centered between the gauge wheels. Once in the correct position, completely tighten two bolts previously left loose in Step 2.

INSTALLATION COMPLETE



NOTE: Backing up when planter is not raised can cause wave blade to catch in the ground and bend or break. Use care to only back up after planter row unit is disengaged from the ground.