



360 BANDIT™

INSTALLATION INSTRUCTIONS LIQUID BLADE



360YIELDCENTER.COM

**FOR QUESTIONS PLEASE CONTACT OUR
PRODUCT SUPPORT TEAM AT 309-300-3120**

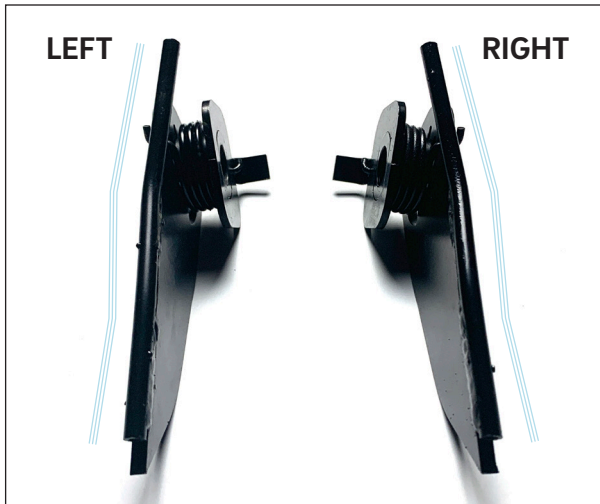
4.6.21 • V4

INSTALLATION INSTRUCTIONS

LIQUID BLADE



BEFORE YOU BEGIN...



HELPFUL TOOLS

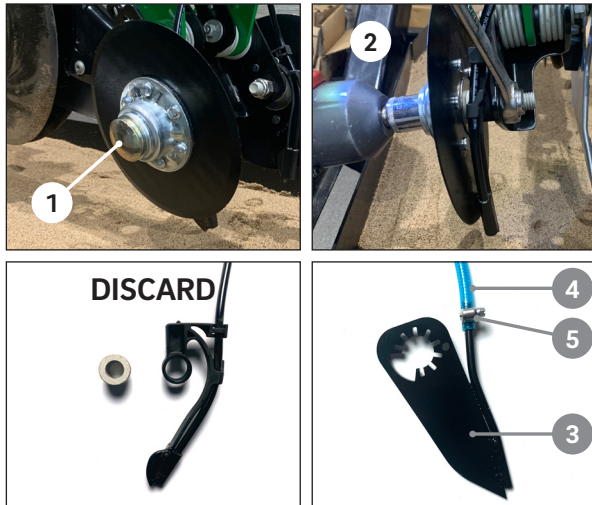
Hammer/ Mallet
Chisel/ Flat Head Screw Driver
Impact Driver
15/16" Socket
15/16" and 1/2" Wrenches
1/2" Ratchet
1/4" Nut Driver

PLEASE NOTE

Each liquid blade is left or right specific. The top of the liquid blade tube should be angled away from the disk while the point of the liquid blade should be angled slightly towards the disk.

NOTE: Left and Right side of the planter row unit are determined from the operators seat.

STEP 1 REMOVE ORIGINAL HOSE GUIDE



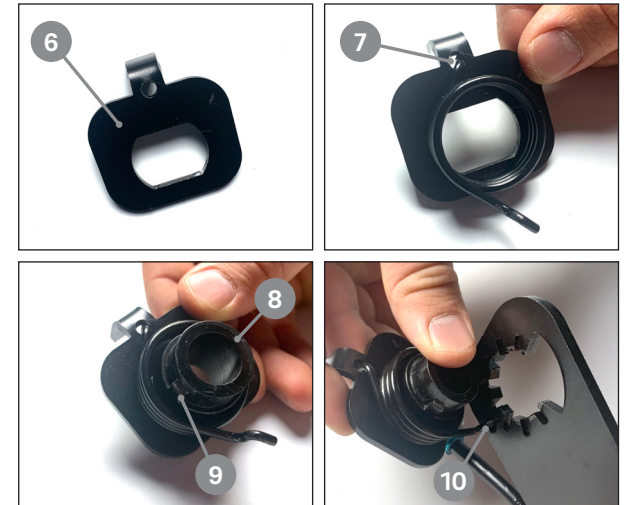
Using a chisel and hammer remove the dust cap **1** from the disk.

Using a 15/16" socket and wrench remove the bolt and nut **2** that secure the disk and remove the disk assembly.

NOTE: The hose guide and bushing can be discarded. All other pieces in the disk assembly should be retained for reinstallation later.

Locate the liquid blade **3** and secure the hose **4** to the blade using the provided hose clamp **5**. Set this piece aside while you complete the spring assembly.

STEP 2 ASSEMBLE SPRING



Locate the spring retainer **6**.

Insert one end of the spring into the hole on the spring retainer **7**.

Insert the new bushing **8** into the spring with the notch **9** facing downward as pictured above.

Insert the other end of the spring into the hole on the liquid blade **10**.

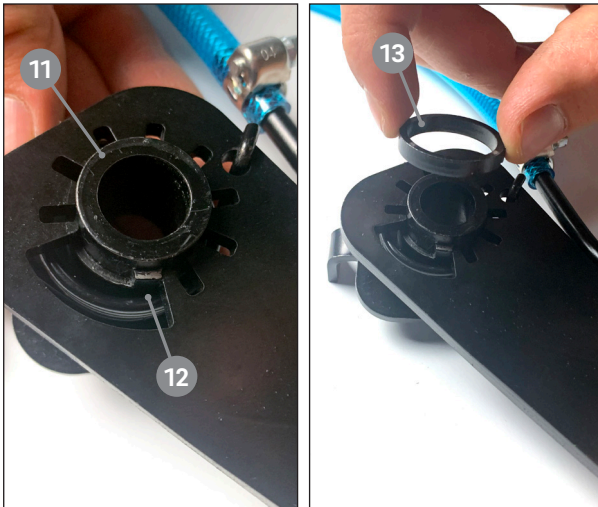
INSTALLATION INSTRUCTIONS

LIQUID BLADE



STEP 3

ASSEMBLE LIQUID BLADE



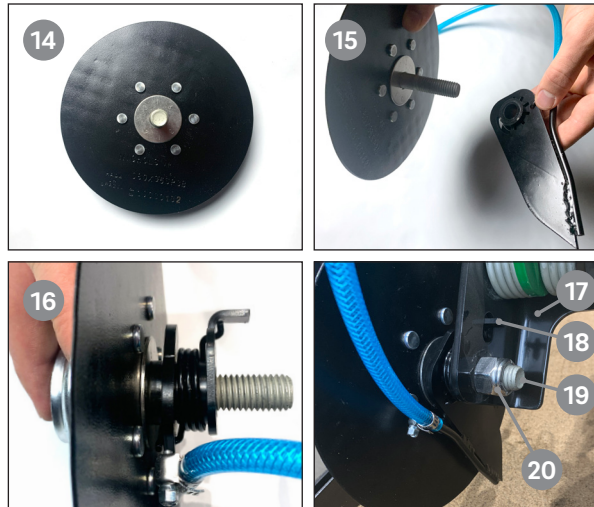
Insert the rest of the spring assembly into the larger hole on the liquid blade **11**.

Once in place, turn the spring assembly until the notch on the bushing locks into place **12**.

Place the washer over the bushing **13**.

STEP 4

RE-ASSEMBLE DISK WITH LIQUID BLADE



Locate the previously removed disk assembly and ensure all parts are in the same order that they were when removed (minus the bushing and hose guide which were discarded) **14**.

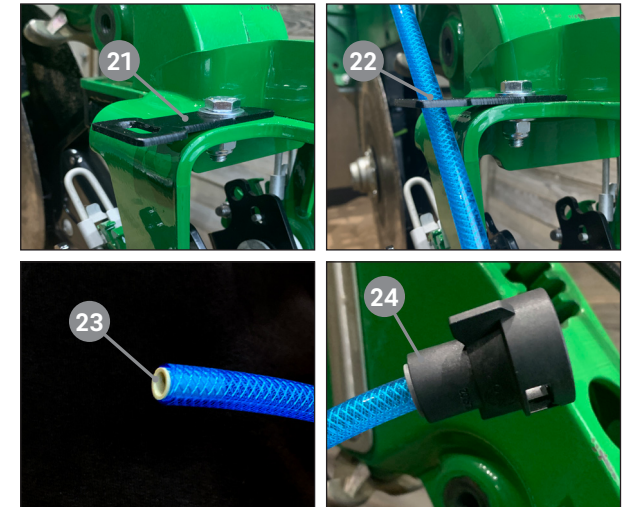
With the bushing side of the liquid blade assembly facing the disk, slide the assembly on to the disk bolt **15**.

Install the full disk and liquid blade assembly **16** onto to the BANDIT pivot arm **17**, ensuring the tab of the spring retainer goes through the top hole **18** and the bolt goes through the bottom hole **19**.

Secure the bolt with the previously removed nut **20**.

STEP 5

ROUTE PLUMBING



On the top of the BANDIT frame, locate the hole that was previously used to route the BANDIT hose. Install the new hose holder **21** on top of that hole using the provided hardware. Ensure there is a washer on both top and bottom.

Route the hose through the end of the hose holder **22**.

Push the hose stiffening insert **23** into the end of the hose.

Install the twist lock fitting **24**.

Repeat these steps for each side of every row.