



# 360 WAVE™

INSTALLATION INSTRUCTIONS  
KINZE MODELS  
WITH 360 BANDIT



[360YIELDCENTER.COM](http://360YIELDCENTER.COM)

FOR QUESTIONS PLEASE CONTACT OUR  
PRODUCT SUPPORT TEAM AT 309-300-3120

3.20.23 • V6

All trademarks are the property of 360 Yield Center, its affiliates and/or its licensors. ©2020 360 Yield Center. All rights reserved.

# INSTALLATION INSTRUCTIONS

KINZE MODELS WITH BANDIT



## STEP 1

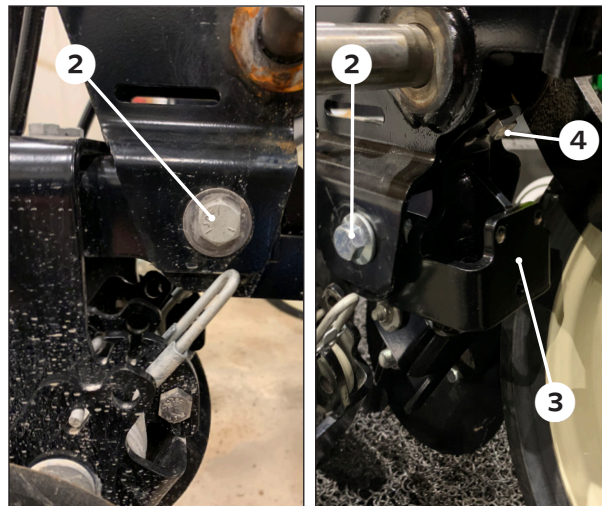
### PREPARE THE ROW UNIT



Remove both gauge wheels and the right-side opening disk **1**.

## STEP 2

### INSTALL WAVE MOUNTING BRACKET



Back the nuts off of the bolts **2** that secure the BANDIT unit to the closing casting.

Slide the WAVE bracket **3** in onto those same bolts **2**.

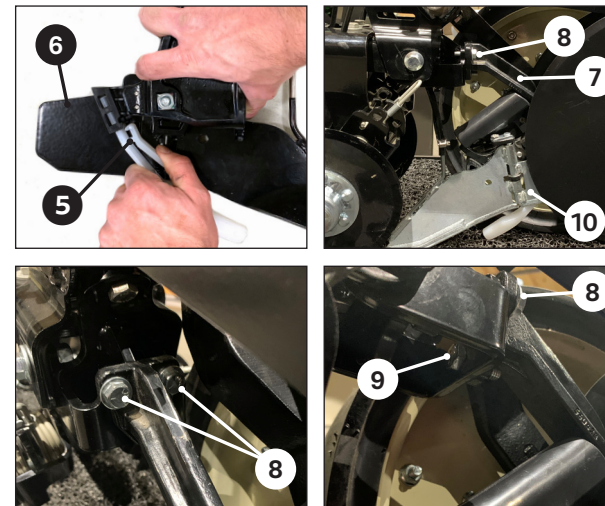
Install the additional bolt **4** in the top of the WAVE bracket.

Loosely secure this hardware.

**NOTE:** At this point, do not completely tighten bolts as there may be adjustments required later.

## STEP 3

### INSTALL WAVE ASSEMBLY



Install firmer **5** on the wave assembly **6** by pinching the top of the firmer together and slide it into place.

Install the WAVE assembly on the WAVE mounting bracket using the provided hardware **7**. Two bolts will be inserted on the front **8** and one on the back **9** of the assembly.

**NOTE:** When installing the WAVE assembly ensure the blade residue guard is flush against the seed tube guard **10**.

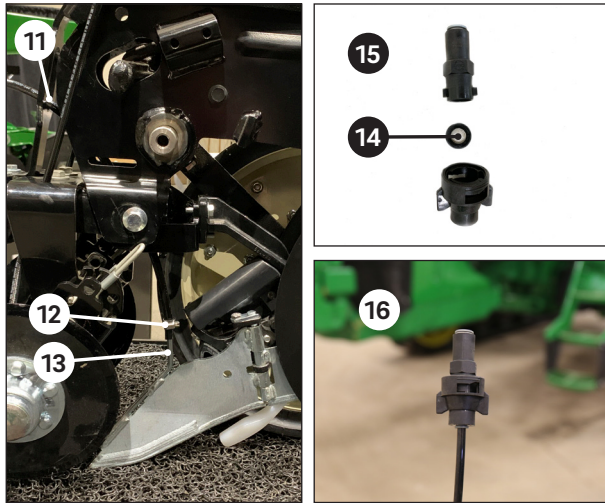
# INSTALLATION INSTRUCTIONS

## KINZE MODELS WITH BANDIT



### STEP 3

#### INSTALL PLUMBING



Route the 3/8" line through the hole on the row unit **11**.

Loosely place the hose clamp **12** onto the hose and install the hose over the product tube **13**. Slide clamp down over hose and product tube and tighten.

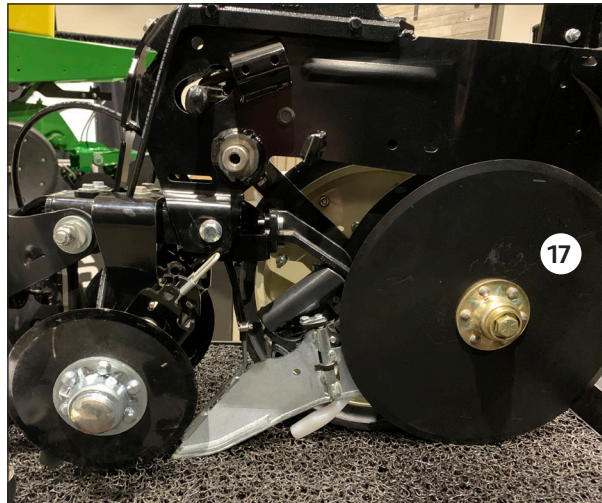
Assemble the orifice into the rubber grommet **14**.

Assemble the three plumbing components in the arrangement shown above **15**.

Attach the plumbing assembly to the other end of the 3/8" line **16**. Secure the line to the row unit using zip ties as you see fit.

### STEP 4

#### REINSTALL GAUGE WHEELS AND DISK



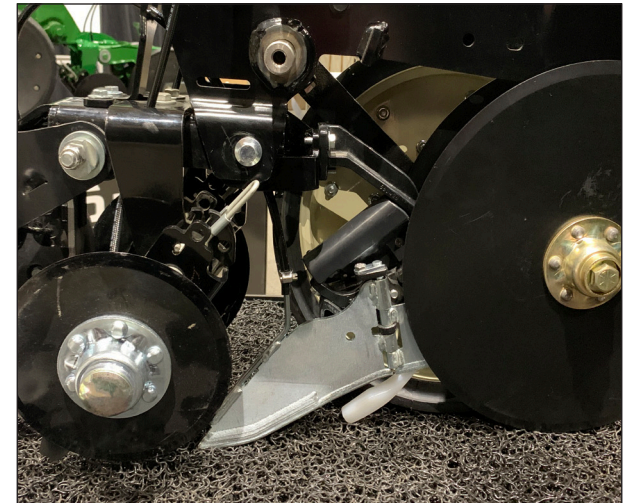
Reinstall right side disk and both gauge wheels using original hardware **17**.

**NOTE: Contact between the WAVE residue guard, and the inside of the right hand opening disk is normal. Adjust opening disks to OEM specs for best performance.**

**NOTE: Ensure that the gauge wheels clear the wave on both sides. The wave unit may need to be adjusted to be centered between the gauge wheels. Once in the correct position, completely tighten two bolts previously left loose in Step 2.**

**NOTE: When the planter is raised, contact between the WAVE blade and large spiked closing wheels is normal. During operation, the closing system comes up to operating depth and proper clearance is achieved.**

### INSTALLATION COMPLETE



**NOTE: Backing up when planter is not raised can cause wave blade to catch in the ground and bend or break. Use care to only back up after planter row unit is disengaged from the ground.**