



PLANTER TOWER

ASSEMBLY INSTRUCTIONS



360YIELDCENTER.COM

FOR QUESTIONS PLEASE CONTACT OUR
PRODUCT SUPPORT TEAM AT 309-300-3120

1.31.2024 • V8

All trademarks are the property of 360 Yield Center, its affiliates and/or its licensors. ©2023 360 Yield Center. All rights reserved.

PLANTER EQUIPMENT TOWER



BEFORE YOU BEGIN

HELPFUL TOOLS



7/16", 15/16", and 3/4" wrenches

7/16" socket

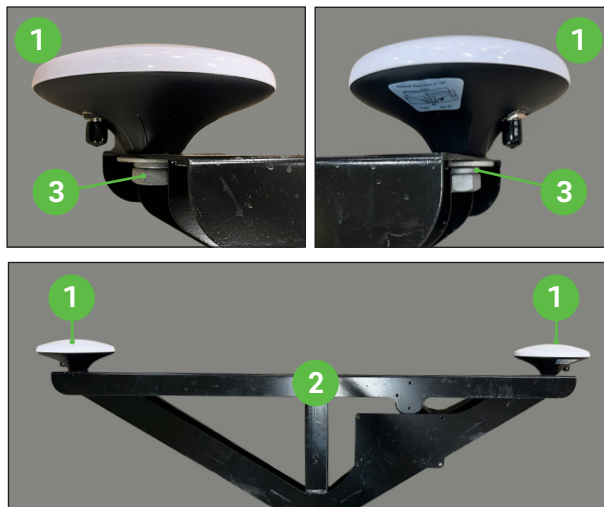
8mm deep well socket

Phillips screw driver

1/4" nut driver

STEP 1

INSTALL GPS RECEIVERS

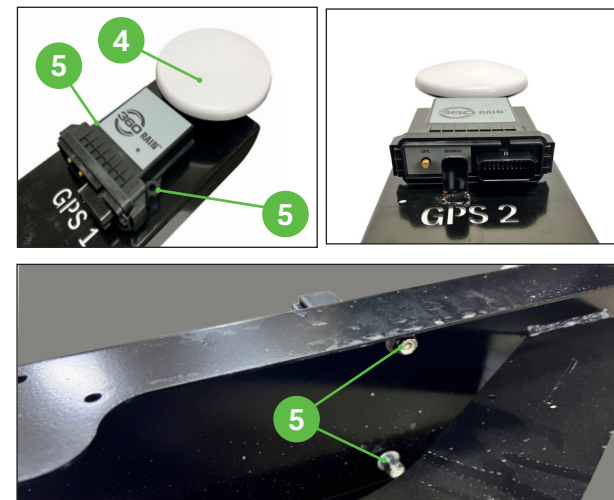


Install the two GPS receivers **1** on top of the planter tower **2** using the provided 5/8" bolts **3** from hardware kit #575758. Tighten completely.

NOTE: Each receiver comes with a lighter cable provided in the box. This lighter cable will NOT be used as a heavier cable is provided from 360 Yield Center.

STEP 2

INSTALL GPS BOARDS



Install the two GPS boards **4** (part # 575513) to the tower using provided 1/4" bolts (two bolts for each board) **5**.

NOTE: The GPS boards are NOT specific to right/left sides of the tower. Either board can be installed on either side. However, orientation of the boards is critical. Orient as pictured above.

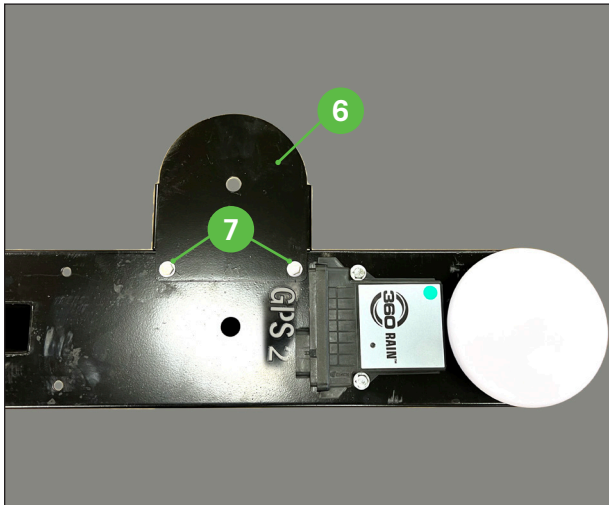
Tighten all four bolts using 7/16" socket and wrench. Do NOT use an impact to tighten.

NOTE: GPS boards are plastic and will crack if over tightened. DO NOT OVER TIGHTEN.

PLANTER EQUIPMENT TOWER



STEP 3 MOUNT ANTENNA



Install the antenna plate (6) to the front right side of the planter tower using the two shorter 1/4" bolts (7) from hardware kit #575758.

STEP 3 CONTINUED MOUNT ANTENNA



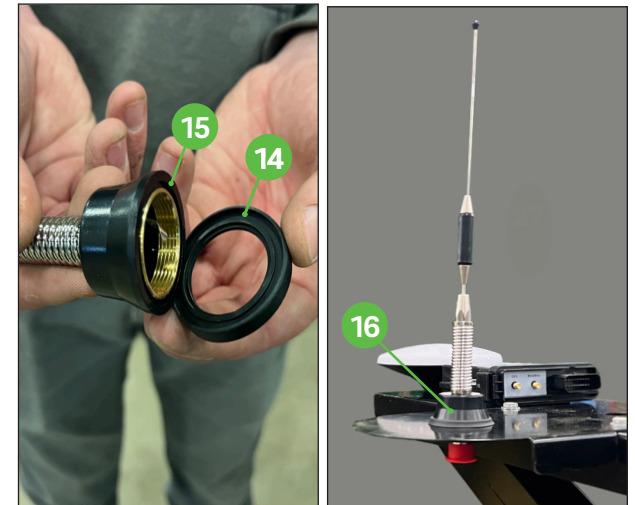
Locate the antenna adapter (8) and remove the antenna mount threads (9) from the end of the adapter.

(10) Thread the antenna adapter through the hole in the circular end of the metal mount.

(11) Reinstall the antenna mount threads on the top side of the antenna adapter. Ensure the rubber o-ring (12) on the antenna mount threads is oriented down towards the antenna mount.

NOTE: When properly installed, the white peg at the top of the threads should be flush with the antenna mounting nut (13).

STEP 4 INSTALL RCM



Insert the flat rubber seal (14) into the threaded end of the antenna (15) ensuring it is fully seated.

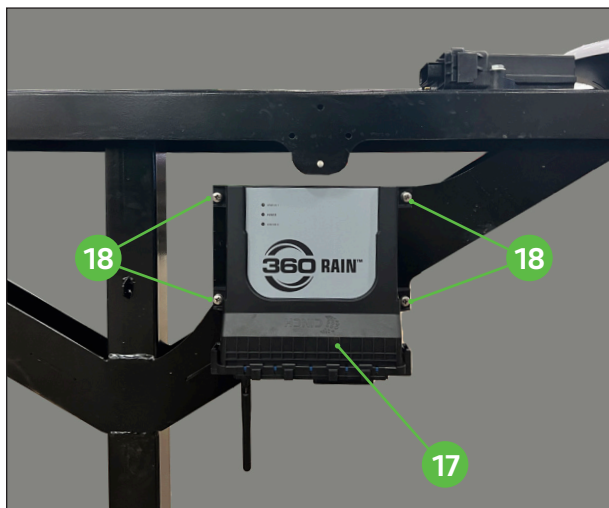
NOTE: There is only one direction to properly install the seal.

With the seal installed thread the antenna onto the antenna adapter (16) and hand tighten.

PLANTER EQUIPMENT TOWER



STEP 4 INSTALL RCM



Install RCM Board (part #575500) (17) to the mounting location on the front left side of the planter tower using four M5 screws (18) provided in hardware kit # 575758.

LTE DEVICE AND SIM CARD

Your cellular/LTE device is shipped with a pre-installed Verizon wireless SIM card.

Inside the included paperwork, you will find the original Verizon SIM card booklet, containing the SIM card number for your reference if needed.

Cellular service can be activated by calling our product support line at 309-300-3120. After planting is complete, call product support to suspend the account to stop re-occurring monthly charges.

STEP 5 ASSEMBLE LTE DEVICE



Locate the LTE device kit (19).

NOTE: The number on the kit will vary for each device.

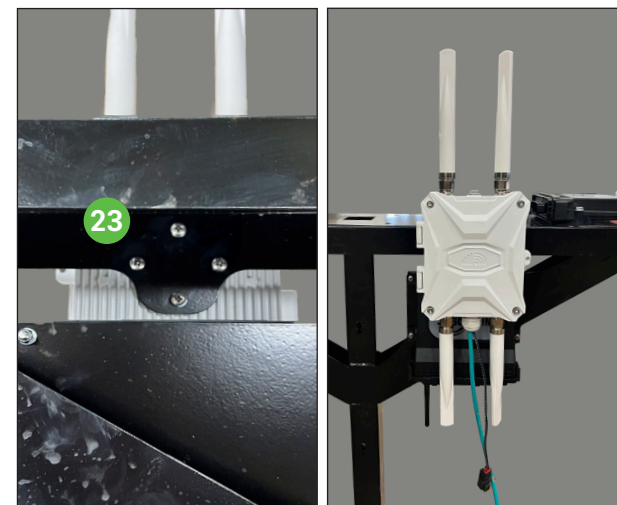
The LTE device (20) comes with a set of four antennas. Two antennas are labeled 4G and two are labeled 2.4 G.

Install both antennas labeled 2.4G (21) on the bottom of the LTE device. The bottom of the device is the side that also has the coed grip. These antennas should be oriented down.

Install both antennas labeled 4G (22) on the opposite end of the LTE device. These antennas should be oriented up.

Snug all four antennas tight with 3/4" wrench.

STEP 6 INSTALL LTE DEVICE



Carefully remove the four screws from the back of the LTE device. Keep these screws as they will immediately be used to install the device to the planter tower.

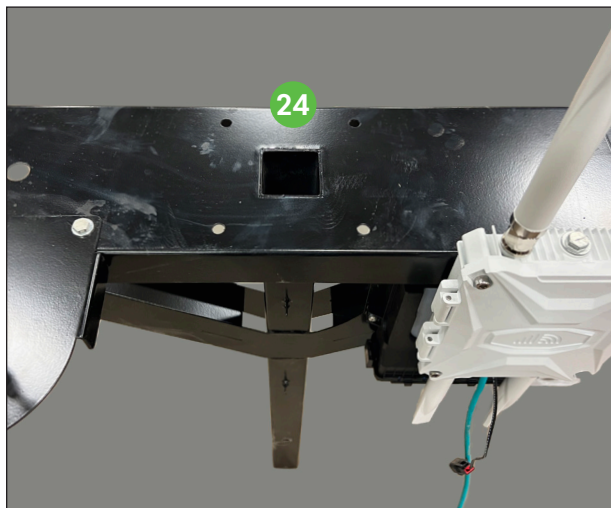
Using the four screws (23) just removed secure the LTE device to the planter tower. Hand tighten with phillips screw driver.

NOTE: Remembering that LEFT and RIGHT are determined from the operators seat, GPS 1, the LTE device, and the RCM box are mounted on the front of the left half of the planter tower. When the completed planter tower is mounted to the planter, the LTE device should be facing forward (towards the tractor).

PLANTER EQUIPMENT TOWER



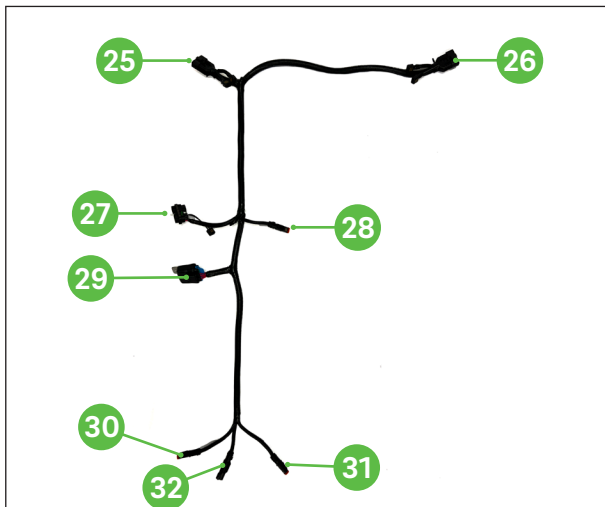
STEP 7 - OPTIONAL STAR FIRE SYSTEM



If your John Deere planter is equipped with active implement guidance, you may be required to re-locate your starfire receiver

Depending on the model year of your planter your John Deere Starfire might be offset from the center of the planter. If your Starfire is mounted in the center there is no need to change the location of the receiver. If your Starfire is mounted off center on the CCS system, our 360 Planter Tower mounts in the same location on the CCS. You can install your Starfire adapter bracket directly to the planter tower **24** using your own hardware and mount.

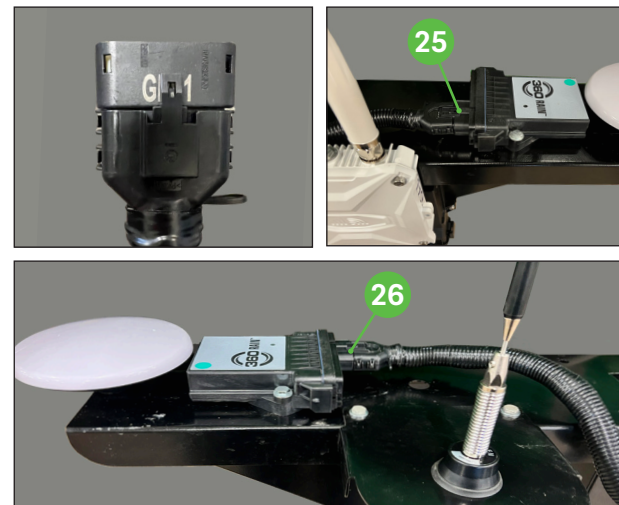
STEP 8 INSTALL HARNESSES



Locate the main harness with GPS connectors (part #575145).

- 25** GPS 1
- 26** GPS 2
- 27** RCM
- 28** COMMS/LTE Device
- 29** PDM (Fuse Block)
- 30** LIFT 1
- 31** LIFT 2
- 32** POWER

STEP 8 CONTINUED INSTALL HARNESSES



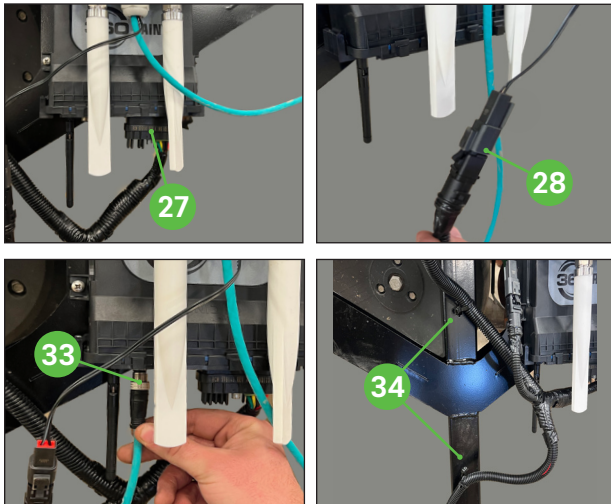
Connect the GPS 1 connector to the GPS 1 board directly behind the LTE device **25**.

Connect the GPS 2 connector to the GPS 2 board **26**.

PLANTER EQUIPMENT TOWER



STEP 8 CONTINUED INSTALL HARNESES



Connect the RCM connector **27** to the RCM box. Using a 1/4" nut driver, tighten the connection.

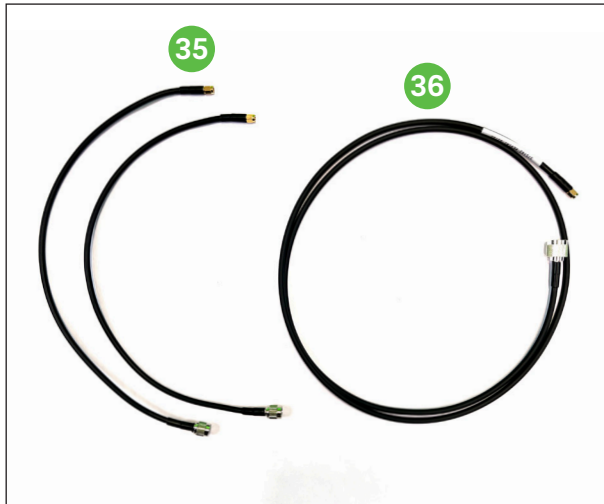
Connect the two-pin COMMS connector **28** to the LTE device.

Install the ethernet cable **33** from the LTE device to the RCM box.

NOTE: This is a keyed connection type so it will only fit one way. This connection can be very tight but needs to be threaded in completely.

Secure harness to tower using zip ties **34**.

STEP 9 INSTALL COAX CABLES

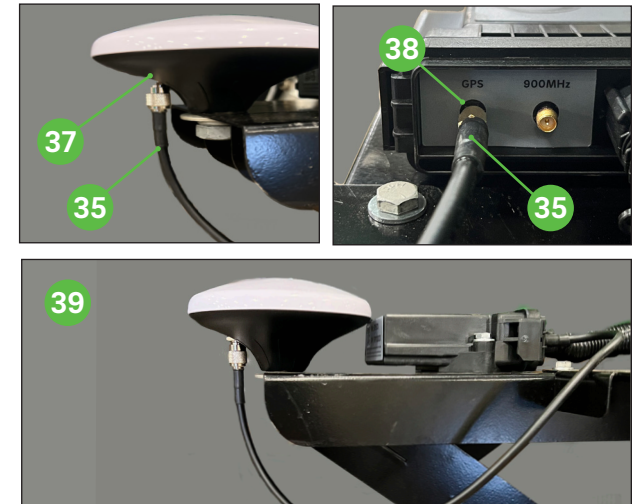


Three coax cables are provided (two short and one long).

35 The two shorter coax cables with smaller connectors (part #575185) will be used to connect each GPS receiver to the GPS port on the GPS box.

36 The longer coax cable with a larger connector (part number 575142) will connect the 900 MHz port on the GPS 1 box to the antenna.

STEP 9 CONTINUED INSTALL GPS COAX CABLES



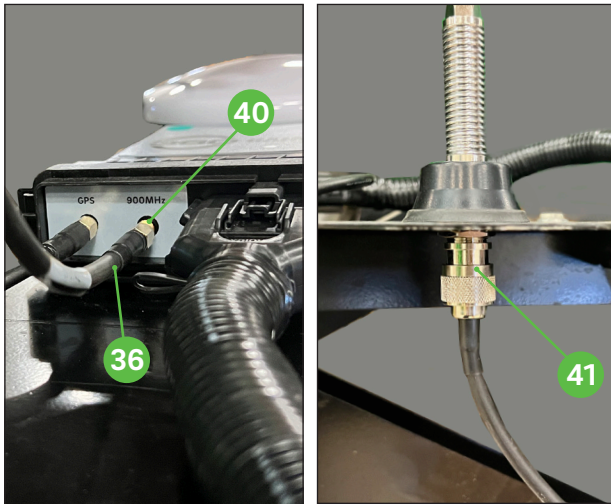
Connect one of the shorter coax cables with smaller connector (part #575185) **35** to the GPS 1 receiver **37**. Connect the other end of the cable to the GPS cable jack on the GPS 1 box **38**.

Repeat this for the GPS 2 at the other end of the tower **39**.

PLANTER EQUIPMENT TOWER



STEP 9 CONTINUED INSTALL 900 MHZ COAX CABLE

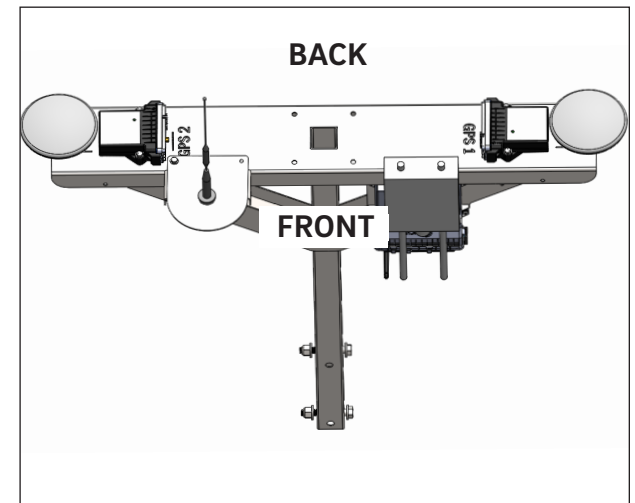
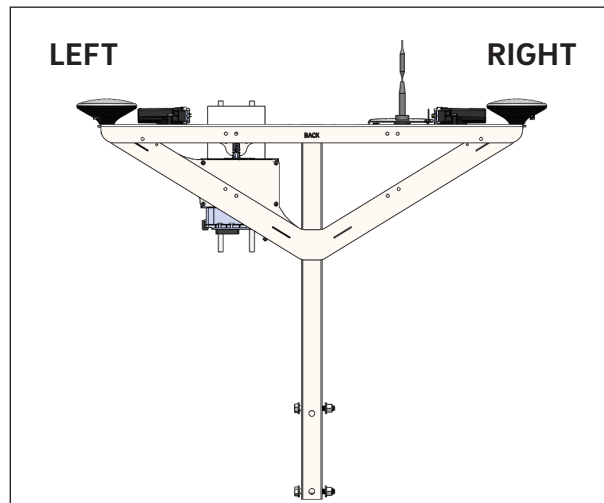


Connect the longer coax cable with the bigger connector (part #575142) **36** to the **GPS 1 box** at the 900 MHz post **40**.

Attach the other end of the cable to the bottom of the antenna **41**.

Coil and secure any extra cable to the tower.

TOWER ASSEMBLY COMPLETE



NOTE: The remaining steps to install the completed tower assembly on the planter are specific to your planter model. Ensure the correct mounting position is used for your specific planter type.

Instructions for mounting this completed tower assembly to the planter are specific to your planter model.